

## Appendix D – Test Data Package Checklist

GLAT2528



### GLAST LAT Project GASU/PDU Vibration Testing

#### Qualification/Acceptance Test Data Package Checklist (Items supplied by Wyle Labs at end of test)

Item		Description / Location
1	<i>AS</i>	Calibrated Equipment List
2	<i>AS</i>	Vibration Test plots (Pre- and Post test signature overlays and random vibration test data for Z, X, and Y axes)
3	<i>AS</i>	Electronic Data in UFF or equivalent format, if available
4	<i>AS</i>	Photographs of test setup
5	<i>AS</i>	Procedure data sheets (Appendices A, B, and C)
6	<i>N/A</i>	Visual Inspection Report
7	<i>N/A</i>	Test Control System Software Setup Sheets

*AS Accepted. Lists 11/5/08*



# Appendix B - Test Log

GLAT2530 HIB Proto Flight  
 GLAT2522 SIU Acceptance  
 GLAT2529 HIB Acceptance



SIU/EPU/HIB  
 GLAST LAT Project ~~TEST~~PS Vibration Testing  
 Test Log

Date	Time	Unit #	Axis	Sine or Random	Level [g]/[grms]	Frequency [Hz]	File Name	Remarks
10/31/05	11:15	HIB 2530	X	Sweep	0.15	5-2000	Proto Flight box	
	11:25		X	SIN-Proto	1.5 etc	5-50	"worst case" levels combining	X & Y profiles per J.K.
	11:35		X	Sweep	0.15	5-2000		
	11:45		X	Rand-Proto	11.5	20-2000		
	11:55		X	Sweep	0.15	5-2000		
	1:15		Y	Sweep	0.15	5-2000		
	1:25		Y	SIN-Proto	1.5 etc	5-50	"worst case" " " " " " " " "	
	1:35		Y	Sweep	0.15	5-2000		
	1:45		Y	Rand-Proto	11.5	20-2000		
	1:50		Y	Sweep	0.15	5-2000		
	2:15	SIU 2522	X	Sweep	0.15	5-2000	Acceptance box	
	2:20		X	SIN-Acc	1.2 etc	5-50		
	2:25		X	Sweep	0.15	5-2000		
	2:30		X	Rand-Acc	8.9	20-2000		
	2:40		X	Sweep	0.15	5-2000		
	2:55		Y	Sweep	0.15	5-2000		
	3:05		Y	SIN-Acc	1.15 etc	5-50		
	3:10		Y	Sweep	0.15	5-2000		
	3:20		Y	Rand-Acc	8.9	20-2000		
	3:25		Y	Sweep	0.15	5-2000		
	3:40	HIB 2529	X	Sweep	0.15	5-2000	Acceptance box	
	3:45		X	SIN-Acc	1.2 etc	5-50	"worst case" " " " " " " " "	
	3:55		X	Sweep	0.15	5-2000		
	4:05		X	Rand-Acc	8.9	20-2000		
	4:10		X	Sweep	0.15	5-2000		
	4:20		Y	Sweep	0.15	5-2000		
	4:25		Y	SIN-Acc	1.2 etc	5-50	"worst case" " " " " " " " "	
	4:35		Y	Sweep	0.15	5-2000		
	4:45		Y	Rand-Acc	8.9	20-2000		
	4:50		Y	Sweep	0.15	5-2000		

→

→ 1. flange bolt head snap off during box removal

1. removed box
2. removed shank from
3. clean & tap keen set
4. test fit screws, o.k. to Form # GF-00005-A





LIST OF CALIBRATED ACCELEROMETERS UPDATED ON 10/05/2005

MODEL	MAKE	SERIAL	ASSET CONTROL	SENSITIVITY (mv/G)	DATE PUT TO SERVICE	CAL DATE	DUE DATE	FREQ. RANGE UP TO (Hz)	RANGE IN G	REMARK
			CONTROL ACCELEROMETERS							
3141A	DYTRAN	117	QL-0193	101.47	06-22-89	10-04-05	10-04-06	2000	50	in service
3141A	DYTRAN	104	QL-0196	106.1	06-29-89	10-04-05	10-04-06	2000	50	in service
3132A	DYTRAN	101	QL-0194	96.5	06-29-89	10-04-05	10-04-06	2000	50	in service
3055A2	DYTRAN	456	QL-0699	101.3	02-16-04	12-17-04	12-17-05	1000	50	in service
3055A2	DYTRAN	425	QL-0697	102.5	02-16-04	12-28-04	12-28-05	2000	50	in service
3055A2	DYTRAN	456	QL-0700	104.4	02-16-04	12-01-04	12-01-05	2000	50	in service
3055A2	DYTRAN	457	QL-0701	103.1	02-16-04	12-28-04	12-28-05	2000	50	in service
3055A2	DYTRAN	458	QL-0702	102.8	02-16-04	12-17-04	12-17-05	2000	50	in service
3055A2	DYTRAN	424	QL-0696	101.1	02-16-04	12-28-04	12-28-05	2000	50	in service
3055A2	DYTRAN	454	QL-0698	103.4	02-16-04	12-17-04	12-17-05	2000	50	in service
7254-10	ENDEVCO	AE26	QL-0408	10.04	02-14-01	03-08-05	03-08-06	2000	500	in service
7254-10	ENDEVCO	AE32	QL-0409	9.99	02-14-01	03-08-05	03-08-06	2000	500	in service
7254-10	ENDEVCO	AE25	QL-0410	10.35	10-23-03	10-05-05	10-05-06	2000	500	in service
7254-10	ENDEVCO	AE31	QL-0411	9.68	10-24-03	10-05-05	10-05-06	2000	500	in service
7254-10	ENDEVCO	AE21	QL-0412	9.62	10-27-03	10-05-05	10-05-06	2000	500	in service
7254-10	ENDEVCO	AE24	QL-0413	9.95	10-27-03	10-05-05	10-05-06	2000	500	in service
3030A4	DYTRAN	1380	QL-0220	9.75	07-03-90	10-05-05	10-05-06	2000	500	in service
3030A4	DYTRAN	1383	QL-0222	9.8	07-03-90	10-04-05	10-04-06	2000	500	in service
3030A4	DYTRAN	1384	QL-0223	9.55	07-03-90	10-04-05	10-04-06	2000	500	in service
3030A4	DYTRAN	1385	QL-0224	9.78	07-03-90	10-04-05	10-04-06	1000	500	in service
3030A4	DYTRAN	1386	QL-0225	9.83	07-03-90	03-10-05	03-10-06	2000	500	in service
3200A5T	DYTRAN	355	QL-0447	1.13	03-02-98	10-11-04	10-04-05	5000	2000	in service
3200A5T	DYTRAN	396	QL-0131	1.14		11-05-04	10-04-05	5000	2000	in service
3055A2	DYTRAN	423	QL-0895	103.4	02-16-04	12-18-04	12-18-05	2000	50	in service
3055A2	DYTRAN	422	QL-0694	103.24	02-16-04	12-17-04	12-17-05	2000	50	in service
3055A2	DYTRAN	421	QL-0693	102	02-16-04	12-17-04	12-17-05	1000	50	in service
			RESPONSE ACCELEROMETERS							
3031AG	DYTRAN	241	QL-0241	9.06	01-02-91	03-08-05	03-08-06	2000	500	in service
3031AG	DYTRAN	242	QL-0242	9.13	01-02-91	03-08-05	03-08-06	2000	500	in service
3031AG	DYTRAN	244	QL-0244	9.17	01-02-91	11-02-04	11-02-05	2000	500	in service
3031AG	DYTRAN	245	QL-0245	9.16	01-02-91	11-02-04	11-02-05	500	500	in service

101

1385-  
1386

252

3031AG	DYTRAN	248	QL-0248	9.76	01-02-91	03-08-05	03-10-06	2000	500	in service
3121A	DYTRAN	763	QL-0114	45.52	10-02-87	11-05-04	11-05-05	2000	100	in service
3031AG	DYTRAN	238	QL-0240	9.93	07-03-91	03-08-05	03-08-06	2000	500	in service
3031AG	DYTRAN	251	QL-0239	8.16	01-02-91	03-08-05	03-08-06	2000	500	in service
3031AG	DYTRAN	252	QL-0247	9.4	01-02-91	11-02-04	11-02-05	2000	500	in service
3031AG	DYTRAN	1844	QL-0274	10.2	01-30-93	11-04-04	11-04-05	2000	500	in service
3031AG	DYTRAN	1837	QL-0272	10.12	03-25-93	11-02-04	11-02-05	1000	500	in service
3010A7	DYTRAN	598	QL-0294	9.5		11-05-04	11-05-05	500	500	in service
3010A4	DYTRAN	334	QL-0295	9.75		11-05-04	11-05-05	1000	500	in service
3200AT	DYTRAN	800	QL-0289	0.05		04-15-05	04-15-06	5000	2000	in service
3200AT	DYTRAN	803	QL-0803	0.052		04-15-05	04-15-06	5000	2000	in service
3225F1	DYTRAN	2625	QL-0705	10.45		12-01-04	12-01-05	2000	500	in service
3225F1	DYTRAN	2626	QL-0706	10.7		07-06-05	07-06-06	2000	500	in service
3101B3	DYTRAN	2903	QL-0460	9.95		03-08-05	03-09-06	2000	500	in service
3101B4	DYTRAN	2905	QL-0461	10.12	02-18-00	03-08-05	03-09-06	2000	500	in service
3101B5	DYTRAN	2909	QL-0462	9.95	02-04-00	03-09-05	03-09-06	2000	500	in service
3055A3	DYTRAN	394	QL-0704	480.7		12-17-04	12-17-05	2000	50	in service
3115A	DYTRAN	188	QL-0703	9.88		10-03-05	10-03-06	1000	500	in service
3055A3	DYTRAN	393	QL-0703	473.4		12-17-04	12-17-05	2000	50	in service

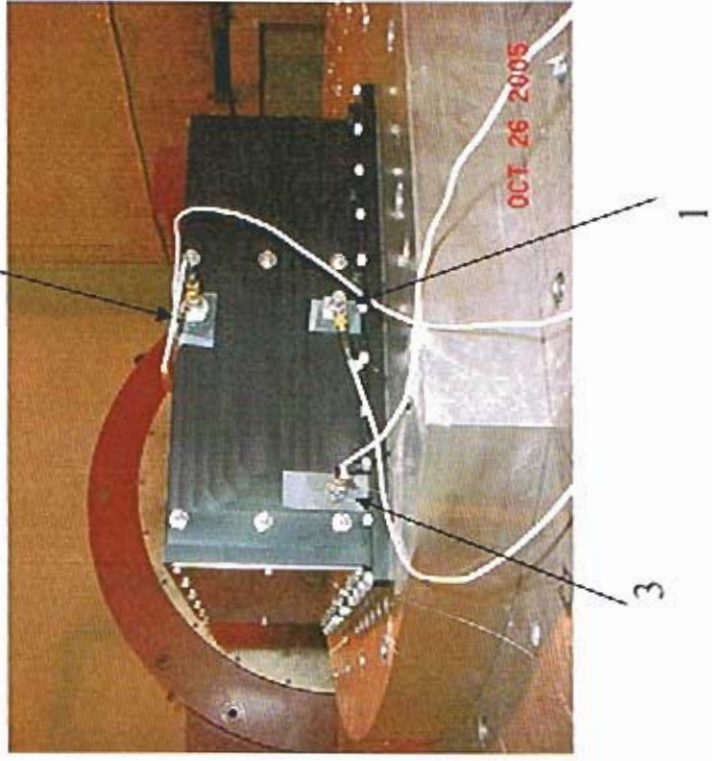
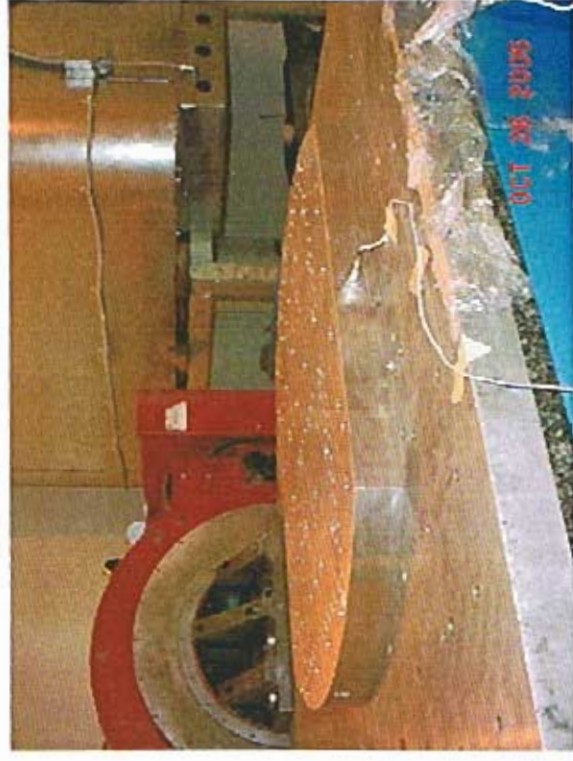
ACCELEROMETERS FOR SEISMIC APPLICATION

393A03	PCB	8243	QL-0559	974	11-06-00	10-16-04	10-16-05	2000	5	in service
J353B33	PCB	72977	QL-0565	100.48	04-07-01	11-04-04	11-04-05	2000	50	in service
393A03	PCB	15373	QL-0558	102.2	11-17-04	11-16-04	11-16-05	2000	5	in service
205C	PCB	1404	QL-0570	0.0813mw/Lb		08-16-05	08-16-06			in service
203B	PCB	1471	QL-0545	0.2673mw/Lb		08-16-05	08-16-06			in service
3200B4	DYTRAN	3380	QL-0692	0.54		04-15-05	04-15-06	2000	5000	in service
3200B4	DYTRAN	3456	QL-0691	0.52		04-15-05	04-15-06	2000	5000	in service

TRIAXIAL ACCELEROMETERS

3013A	DYTRAN	109	QL-0291	ch1=10.6 ch2=10.19 ch3=10.52	02-16-00	03-09-05	03-09-06	1000	500	in service
3093M6	DYTRAN	382	QL-0689	ch1=54.28 ch2=51.90 ch3=53.28		2004-12-1	2005-12-1	1000	100	in service
3093M3	DYTRAN	383	QL-0690	ch1=52.32 ch2=52.82		2004-12-1	2005-12-1	1000	100	in service

**Stanford linear Accelerator**  
**Vibration Test**



X—Axis

SIU GLAT2527 (LAT-DS-01862)

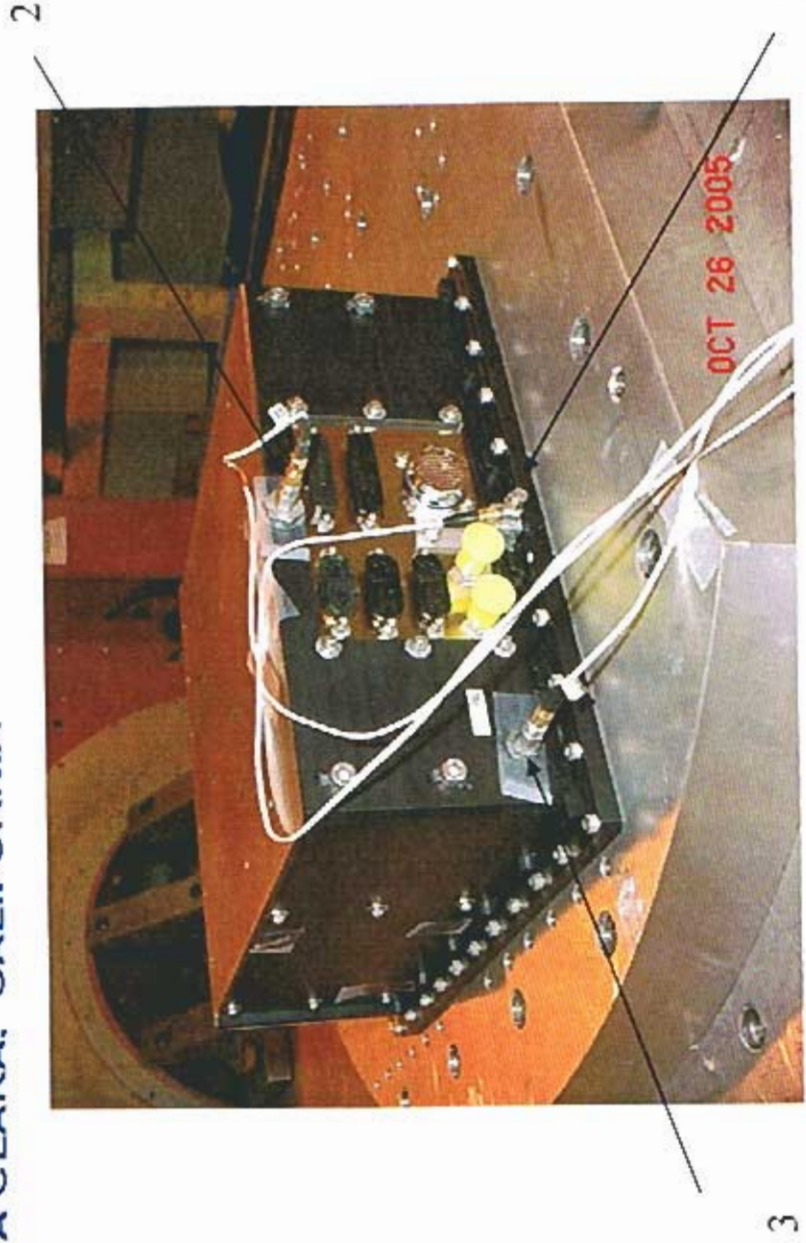
**JOB NO. : QL-05-851**

**10-26-2005.**



## Stanford linear Accelerator

### Vibration Test



Y—Axis

SIU GLAT2527 (LAT-DS-01862)

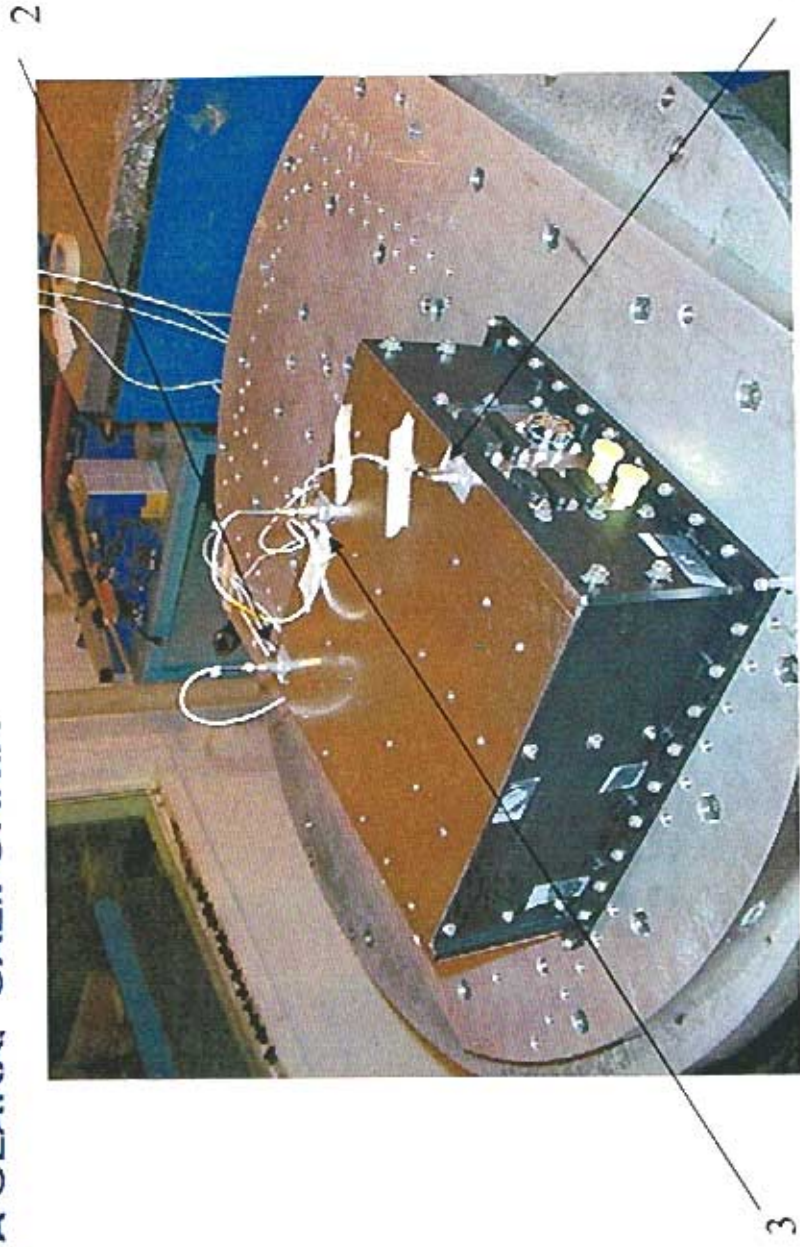
JOB NO. : QL-05-851

10-26-2005.





# Stanford linear Accelerator Vibration Test

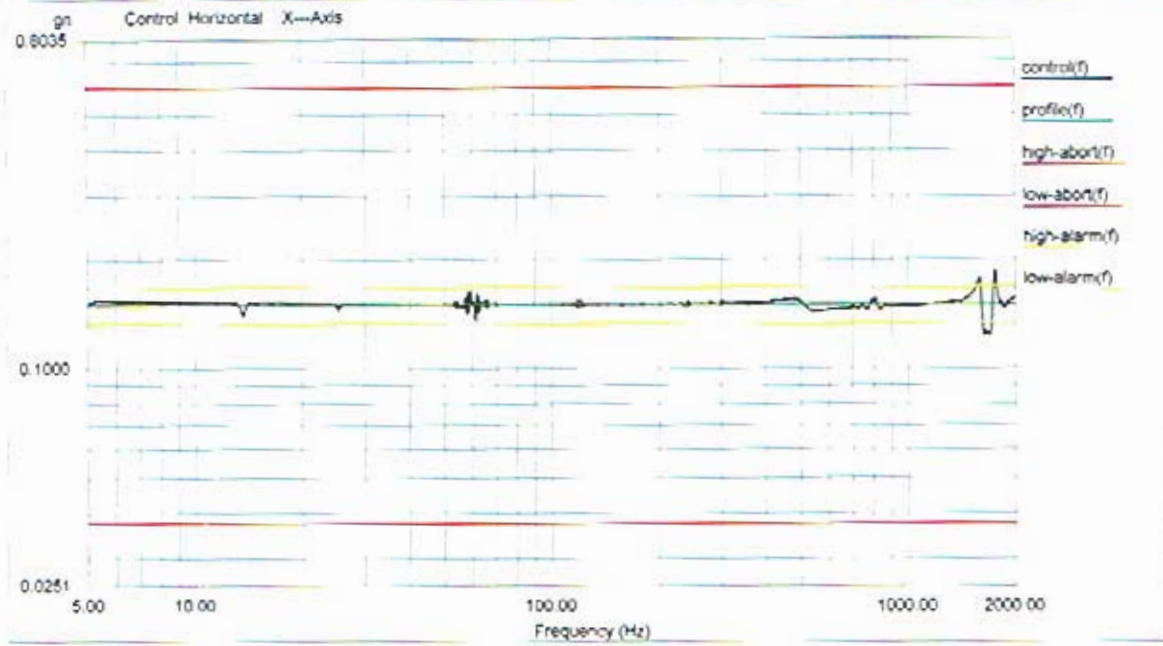


Z—Axis

SIU GLAT2527 (LAT-DS-01862)

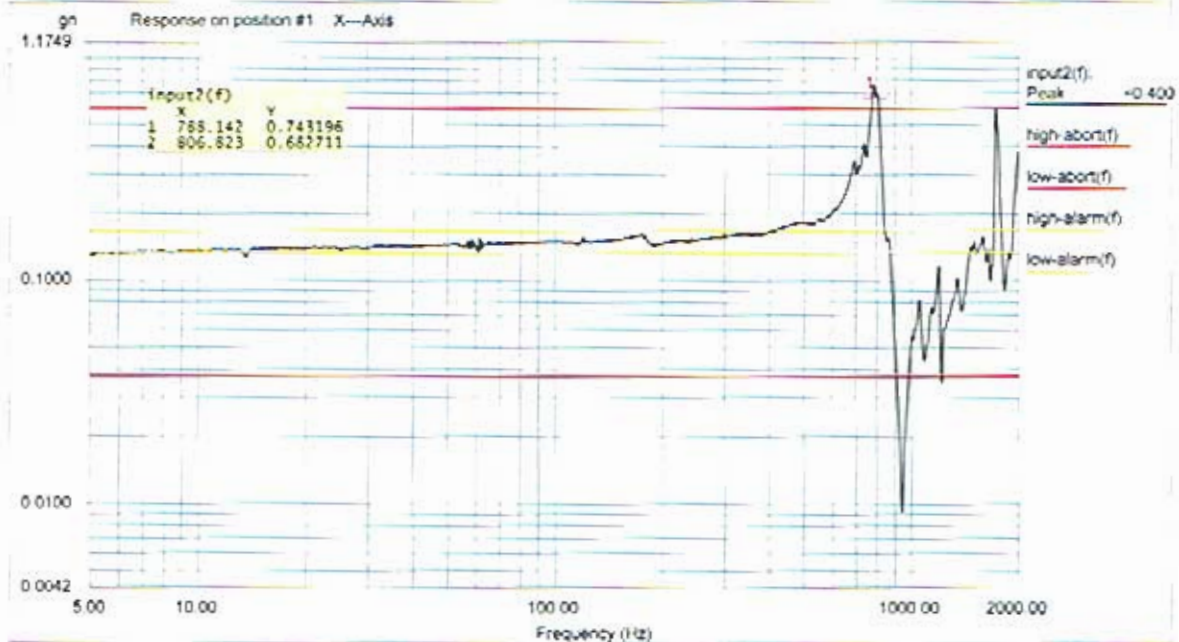
JOB NO. : QL-05-851

10-27-2005.



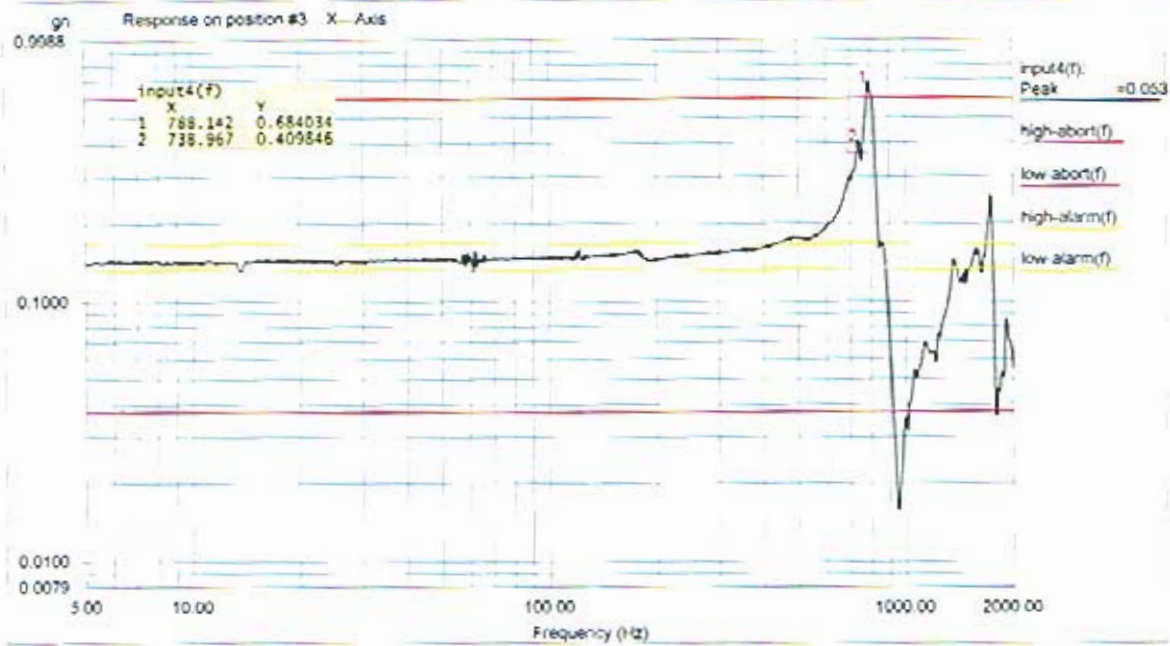
Level: 100 % Control Peak: 0.156929 gn Full Level Time: 00:04:19 Sweep Type: Logarithmic  
 Frequency: 1999.669067 Hz Demand Peak: 0.150000 gn Time Remaining: 00:00:00 Sweep Rate: 2 Oct/Min

Data saved at 02:19:38 PM, Monday, October 31, 2005 Report created at 02:19:39 PM, Monday, October 31, 2005



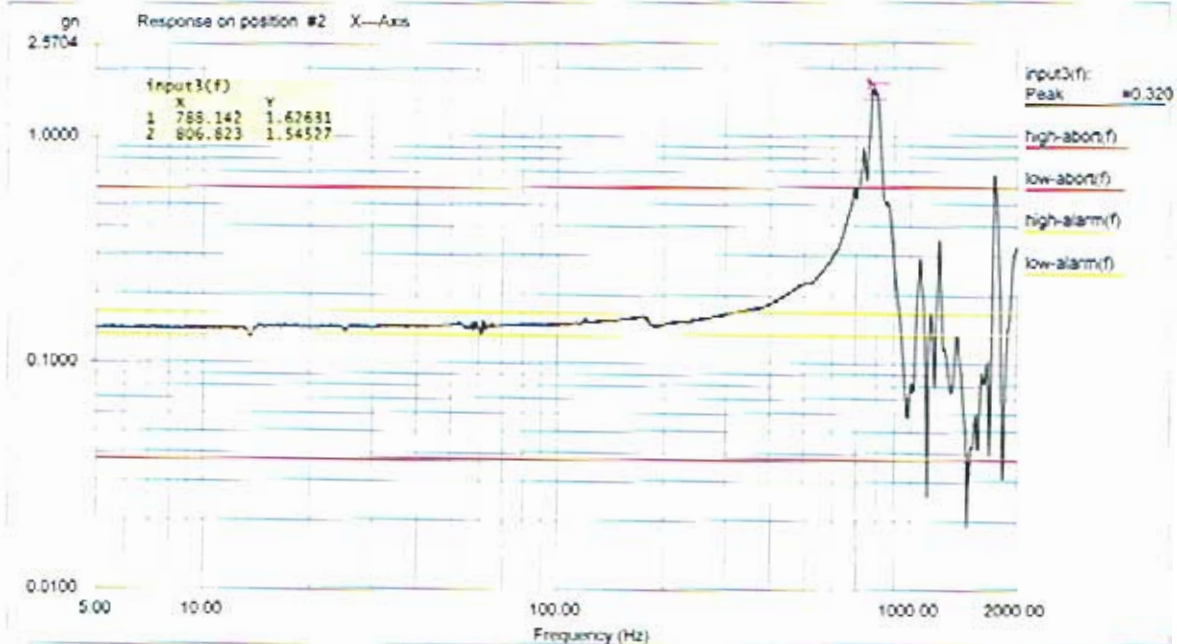
Level: 100 % Control Peak: 0.156929 gn Full Level Time: 00:04:19 Sweep Type: Logarithmic  
 Frequency: 1999.669067 Hz Demand Peak: 0.150000 gn Time Remaining: 00:00:00 Sweep Rate: 2 Oct/Min

Data saved at 02:19:38 PM, Monday, October 31, 2005 Report created at 02:19:39 PM, Monday, October 31, 2005



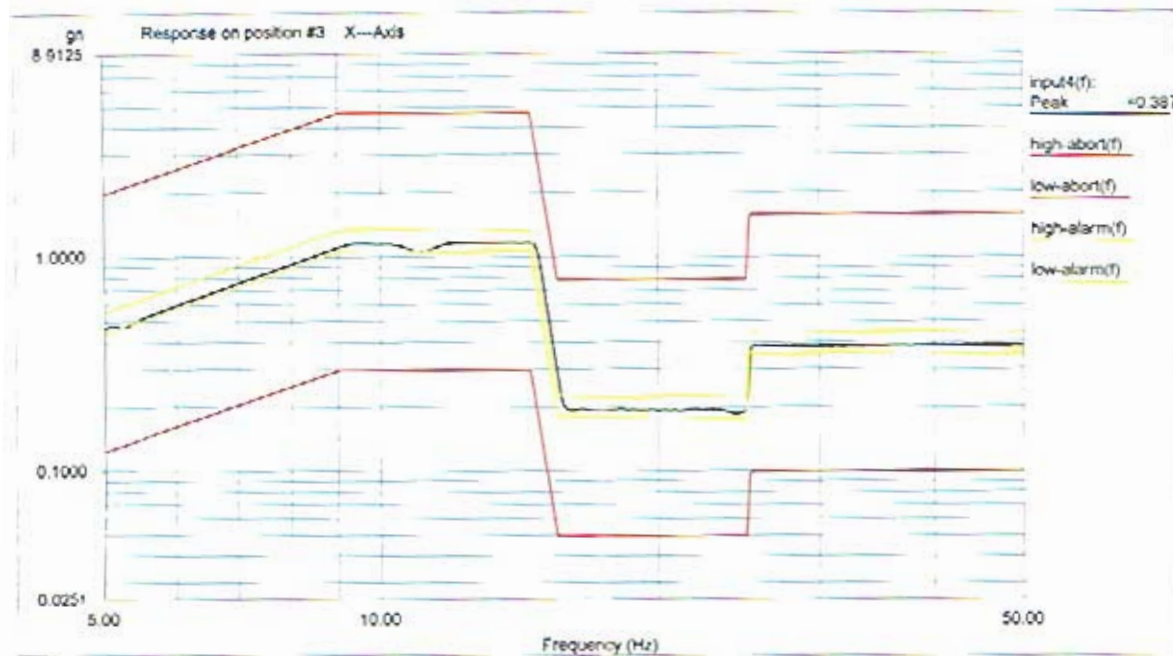
Level: 100 % Control Peak: 0.156929 gn Full Level Time: 00:04:19 Sweep Type: Logarithmic  
 Frequency: 1999.669067 Hz Demand Peak: 0.150000 gn Time Remaining: 00:00:00 Sweep Rate: 2 Oct/Min

Data saved at 02:19:38 PM, Monday, October 31, 2005 Report created at 02:19:39 PM, Monday, October 31, 2005



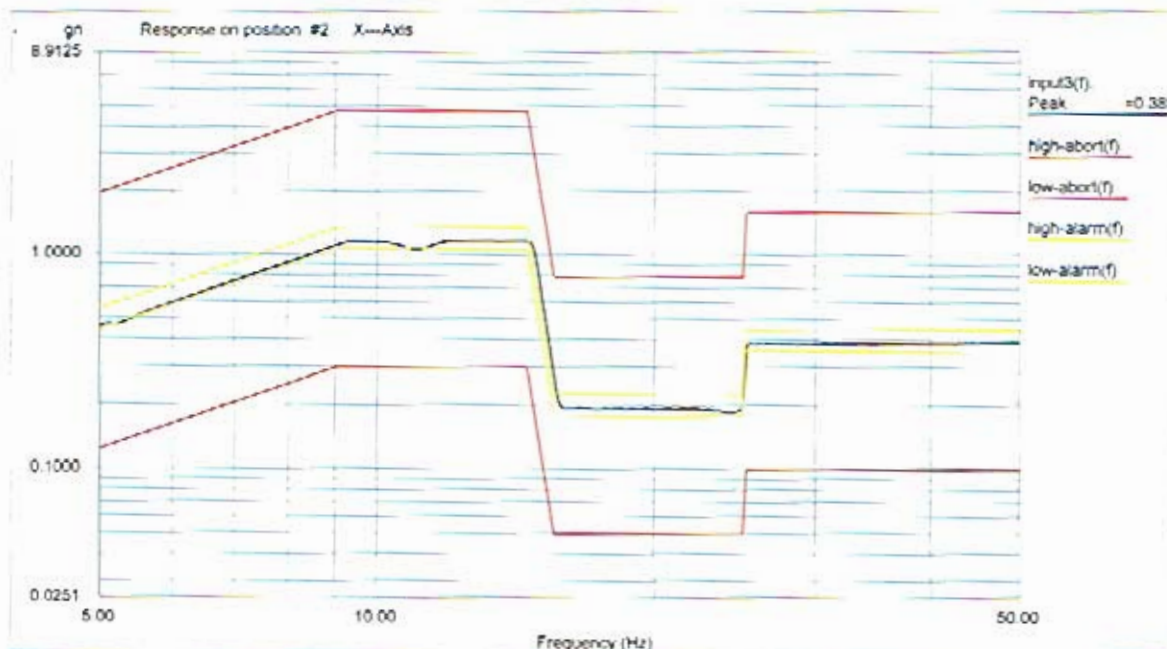
Level: 100 % Control Peak: 0.156929 gn Full Level Time: 00:04:19 Sweep Type: Logarithmic  
 Frequency: 1999.669067 Hz Demand Peak: 0.150000 gn Time Remaining: 00:00:00 Sweep Rate: 2 Oct/Min

Data saved at 02:19:38 PM, Monday, October 31, 2005 Report created at 02:19:39 PM, Monday, October 31, 2005



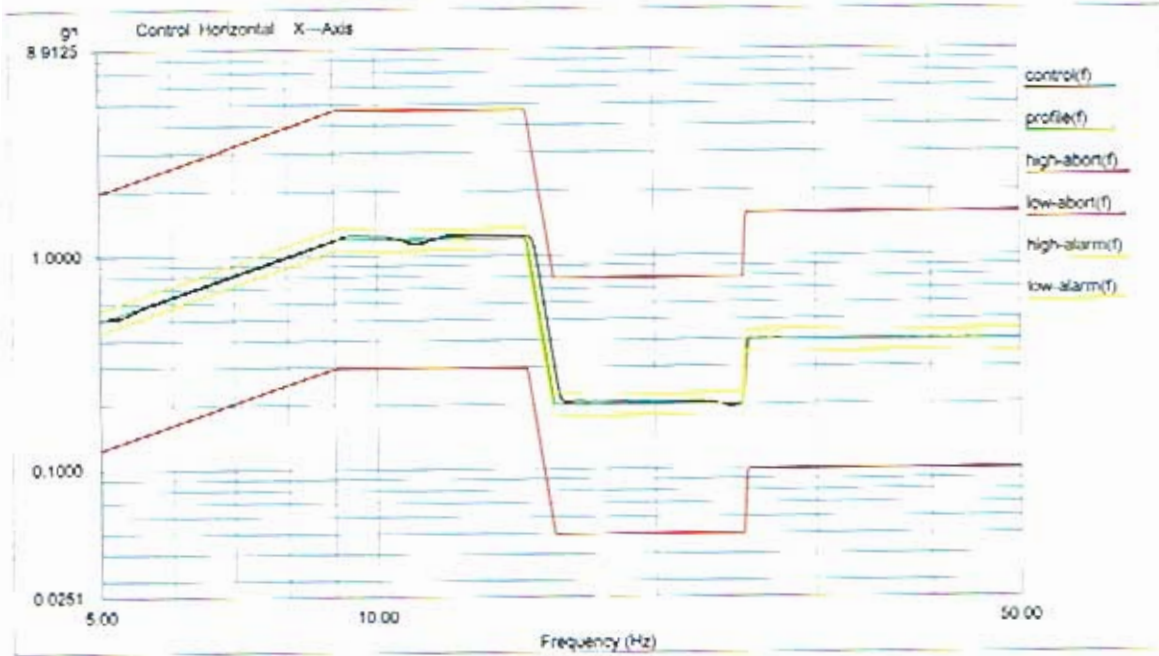
Level: 100 % Control Peak: 0.400501 gn Full Level Time: 00:01:02 Sweep Type: Logarithmic  
 Frequency: 49.979610 Hz Demand Peak: 0.400000 gn Time Remaining: 00:00:00 Sweep Rate: 4 Oct/Min

Data saved at 02:25:08 PM, Monday, October 31, 2005 Report created at 02:25:09 PM, Monday, October 31, 2005



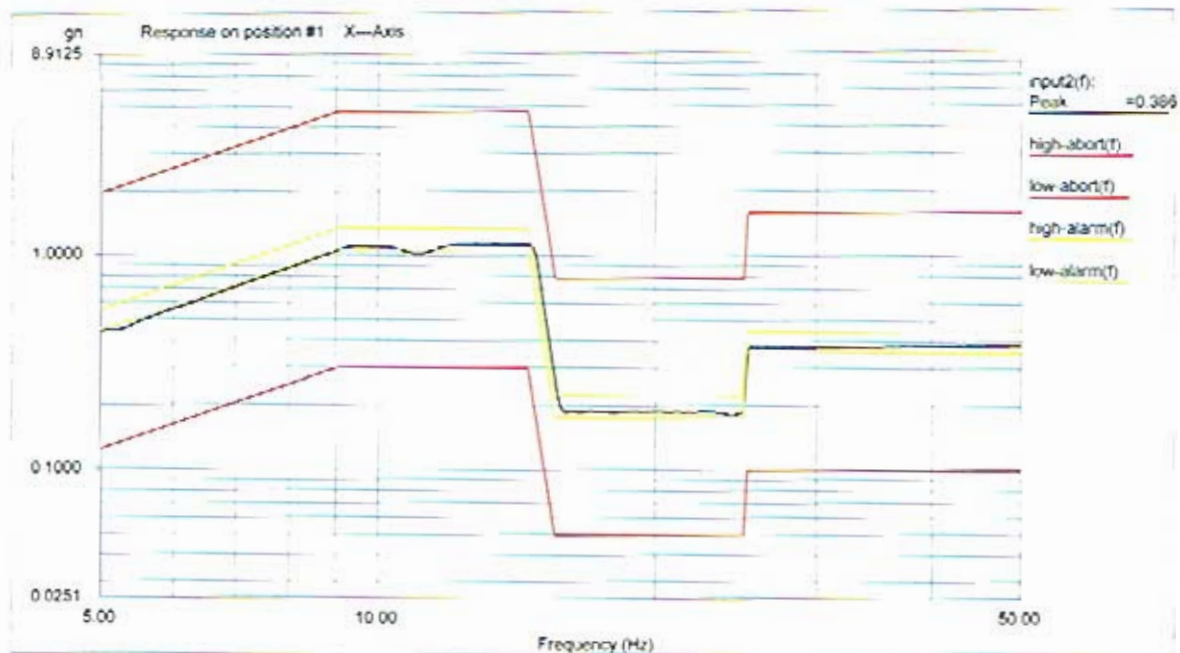
Level: 100 % Control Peak: 0.400501 gn Full Level Time: 00:01:02 Sweep Type: Logarithmic  
 Frequency: 49.979610 Hz Demand Peak: 0.400000 gn Time Remaining: 00:00:00 Sweep Rate: 4 Oct/Min

Data saved at 02:25:08 PM, Monday, October 31, 2005 Report created at 02:25:09 PM, Monday, October 31, 2005



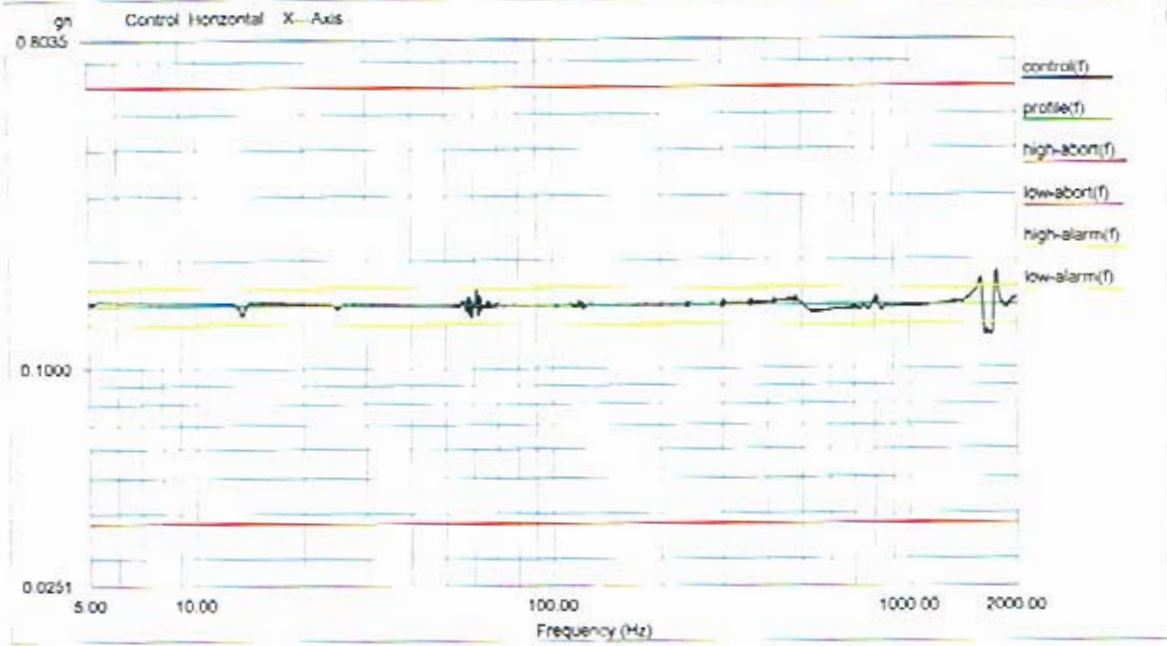
Level: 100 % Control Peak: 0.400501 gn Full Level Time: 00:01:02 Sweep Type: Logarithmic  
 Frequency: 49.979610 Hz Demand Peak: 0.400000 gn Time Remaining: 00:00:00 Sweep Rate: 4 Oct/Min

Data saved at 02:25:08 PM, Monday, October 31, 2005 Report created at 02:25:09 PM, Monday, October 31, 2005



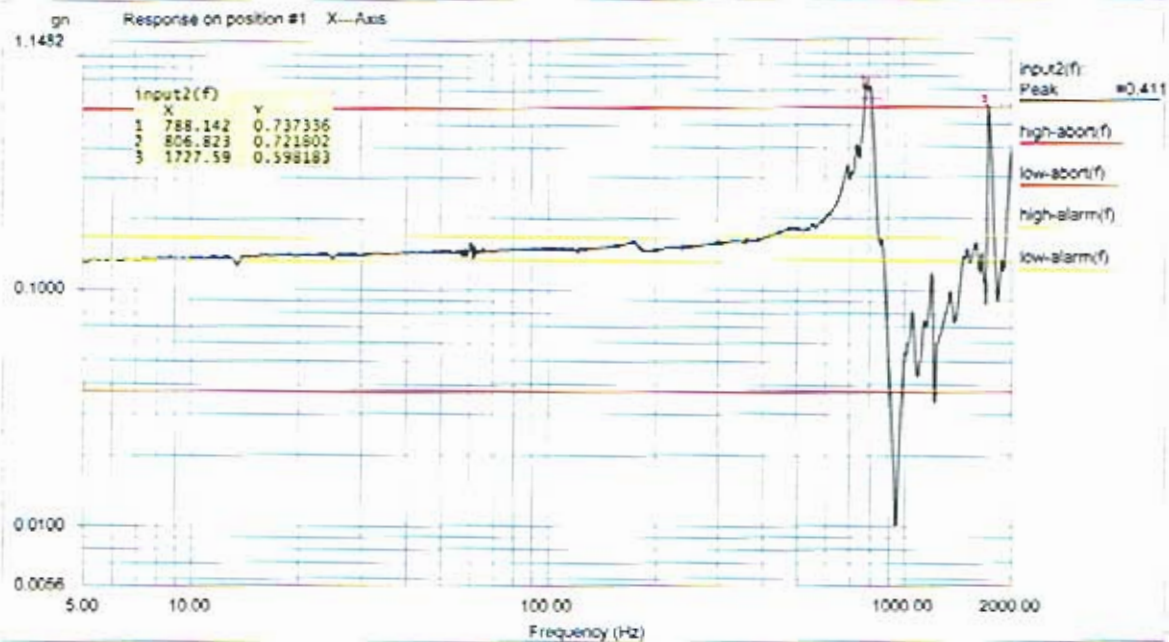
Level: 100 % Control Peak: 0.400501 gn Full Level Time: 00:01:02 Sweep Type: Logarithmic  
 Frequency: 49.979610 Hz Demand Peak: 0.400000 gn Time Remaining: 00:00:00 Sweep Rate: 4 Oct/Min

Data saved at 02:25:08 PM, Monday, October 31, 2005 Report created at 02:25:09 PM, Monday, October 31, 2005



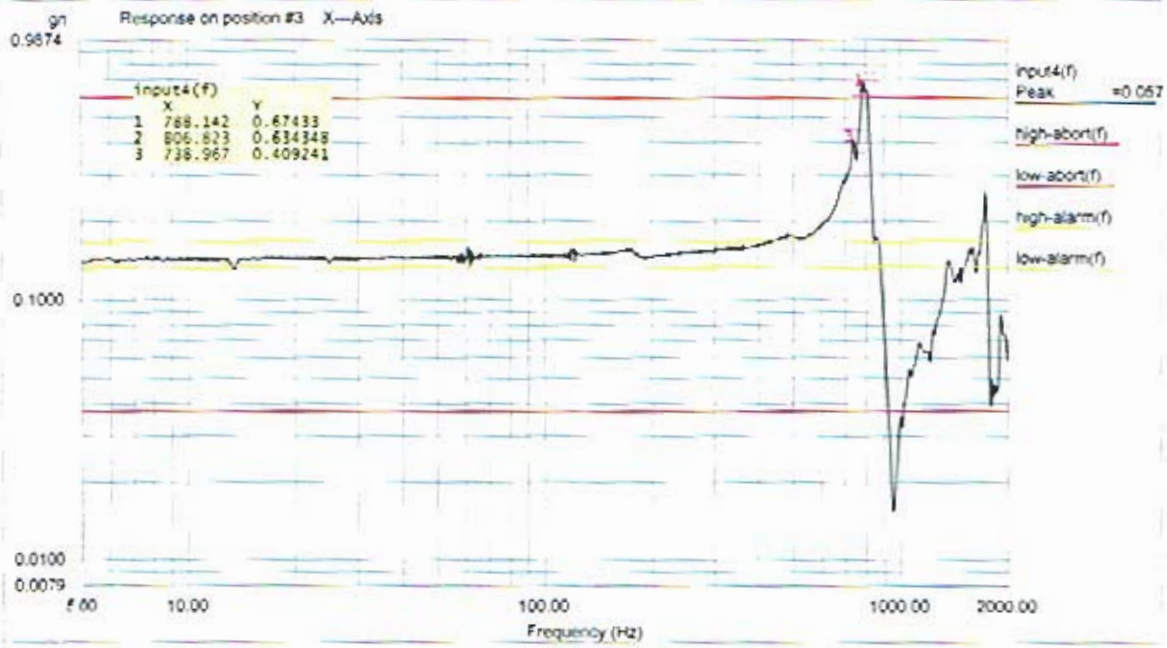
Level: 100 % Control Peak: 0.156468 gn Full Level Time: 00:04:19 Sweep Type: Logarithmic  
 Frequency: 1999.669067 Hz Demand Peak: 0.150000 gn Time Remaining: 00:00:00 Sweep Rate: 2 Oct/Min

Data saved at 02:30:35 PM, Monday, October 31, 2005 Report created at 02:30:36 PM, Monday, October 31, 2005



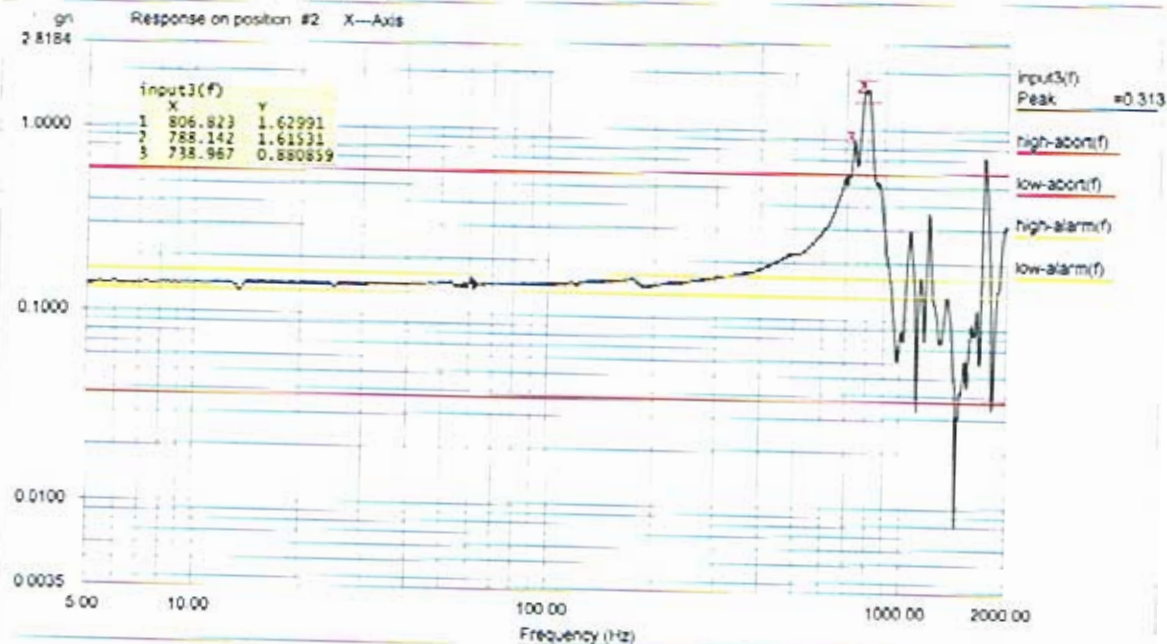
Level: 100 % Control Peak: 0.156468 gn Full Level Time: 00:04:19 Sweep Type: Logarithmic  
 Frequency: 1999.669067 Hz Demand Peak: 0.150000 gn Time Remaining: 00:00:00 Sweep Rate: 2 Oct/Min

Data saved at 02:30:35 PM, Monday, October 31, 2005 Report created at 02:30:36 PM, Monday, October 31, 2005



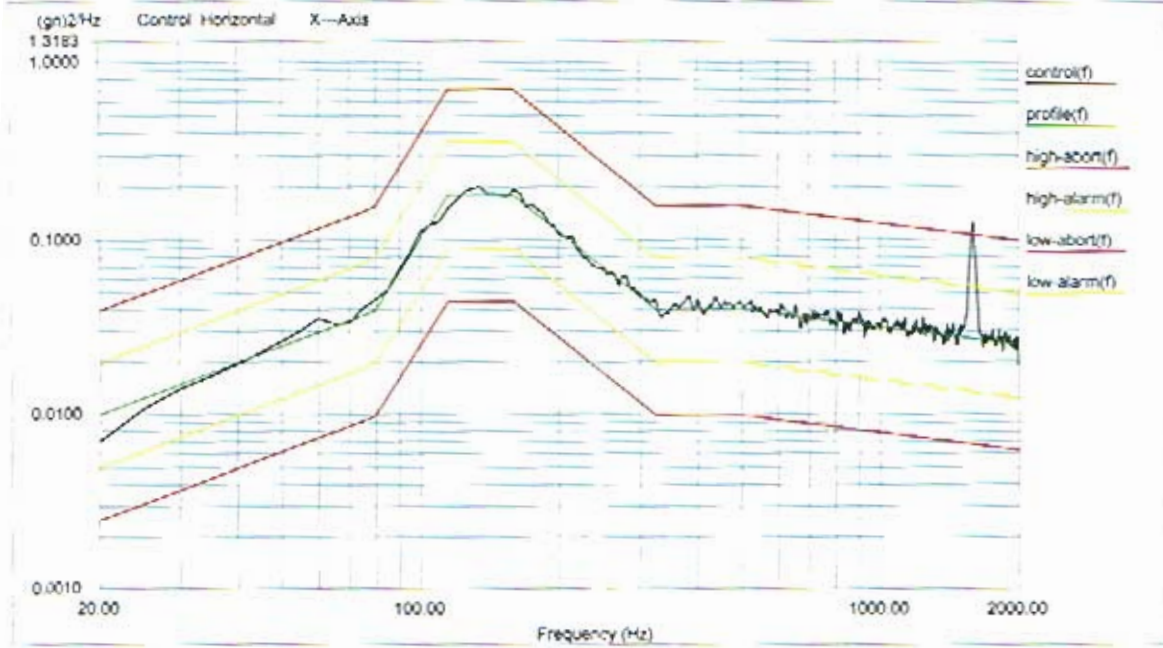
Level: 100 % Control Peak: 0.156458 gn Full Level Time: 00:04:19 Sweep Type: Logarithmic  
 Frequency: 1999.669067 Hz Demand Peak: 0.150000 gn Time Remaining: 00:00:00 Sweep Rate: 2 Oct/Min

Data saved at 02:50:35 PM, Monday, October 31, 2005 Report created at 02:50:36 PM, Monday, October 31, 2005



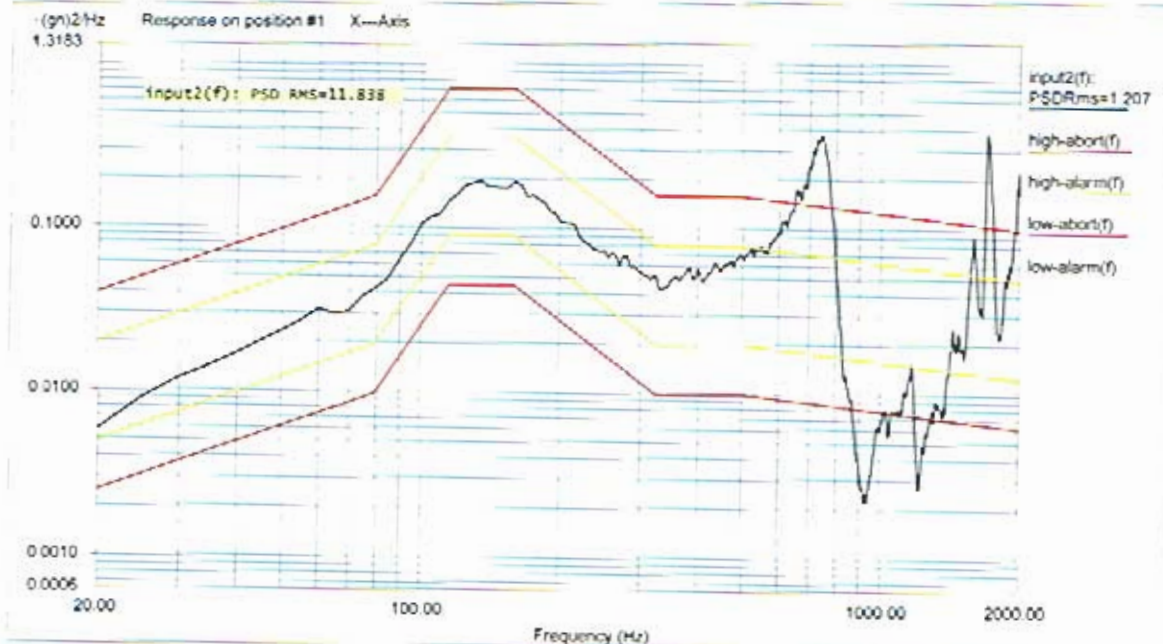
Level: 100 % Control Peak: 0.156458 gn Full Level Time: 00:04:19 Sweep Type: Logarithmic  
 Frequency: 1999.669067 Hz Demand Peak: 0.150000 gn Time Remaining: 00:00:00 Sweep Rate: 2 Oct/Min

Data saved at 02:50:36 PM, Monday, October 31, 2005 Report created at 02:50:37 PM, Monday, October 31, 2005



Level: 100 %  
Control RMS: 9.449133 gn Full Level Elapsed Time: 00:01:00 Lines: 400 Frame Time: 0.200000 Seconds  
Demand RMS: 8.915771 gn Remaining Time: 00:00:00 DOF: 154 df: 5.000000 Hz

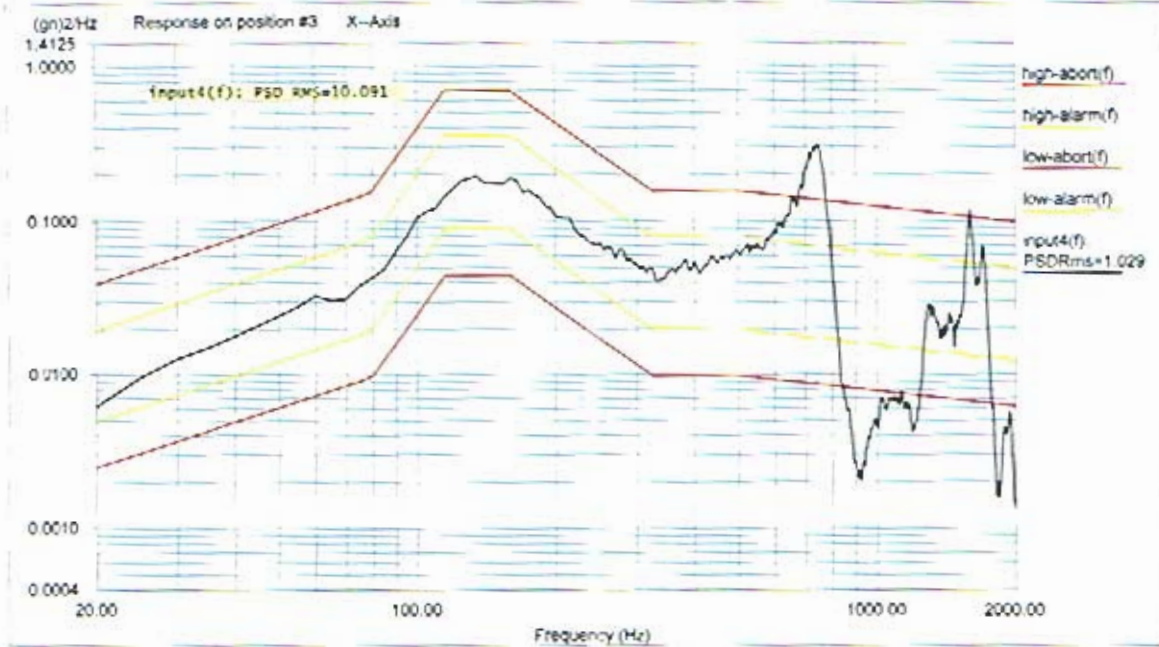
Data saved at 02:36:39 PM, Monday, October 31, 2005 Report created at 02:36:40 PM, Monday, October 31, 2005



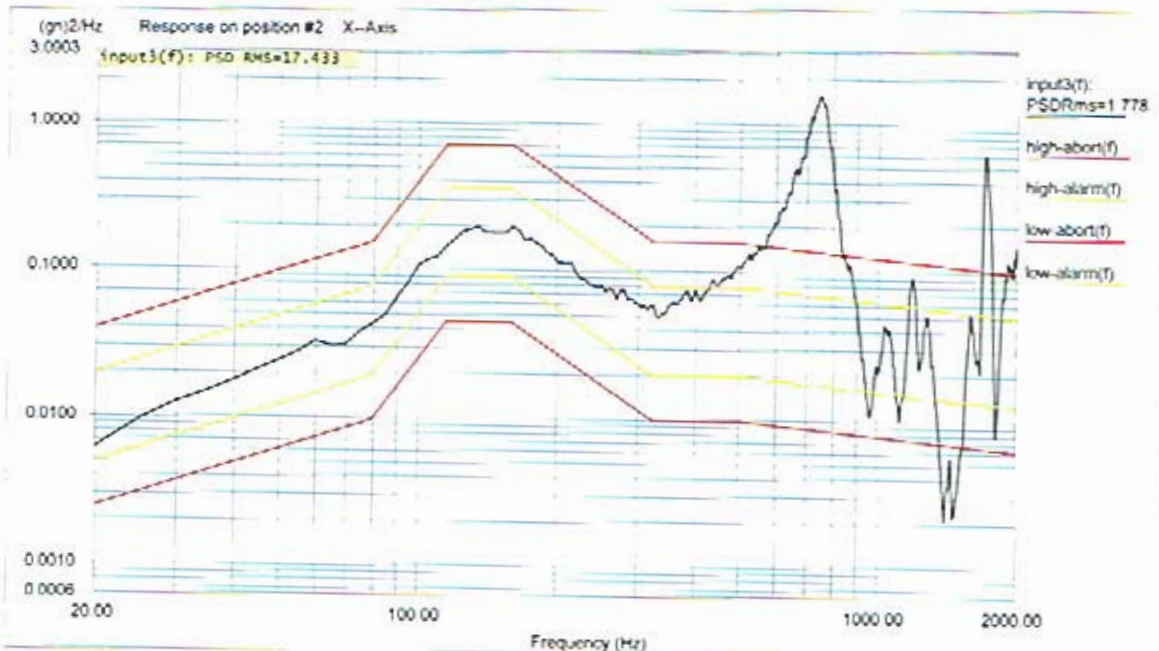
Level: 100 %  
Control RMS: 9.449133 gn Full Level Elapsed Time: 00:01:00 Lines: 400 Frame Time: 0.200000 Seconds  
Demand RMS: 8.915771 gn Remaining Time: 00:00:00 DOF: 154 df: 5.000000 Hz

Data saved at 02:36:39 PM, Monday, October 31, 2005 Report created at 02:36:40 PM, Monday, October 31, 2005

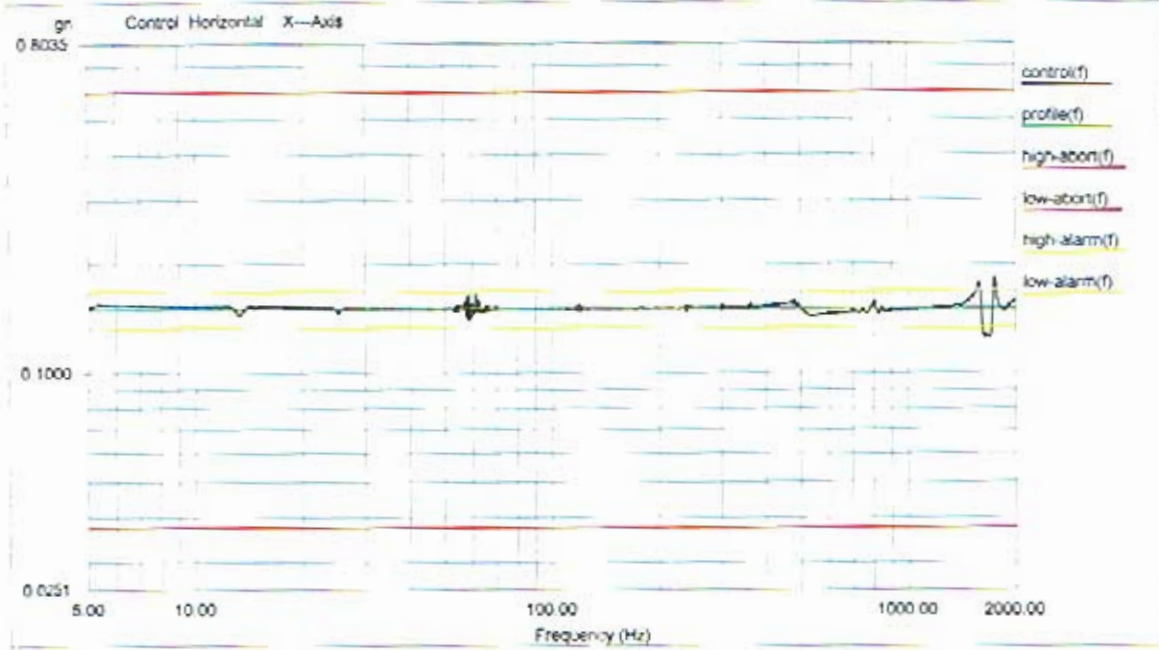




Level: 100 %  
Control RMS: 9.449133 gn Full Level Elapsed Time: 00:01:00 Lines: 400 Frame Time: 0.200000 Seconds  
Demand RMS: 8.915771 gn Remaining Time: 00:00:00 DOF: 154 dF: 5.000000 Hz  
Data saved at 02:36:39 PM, Monday, October 31, 2005 Report created at 02:36:40 PM, Monday, October 31, 2005

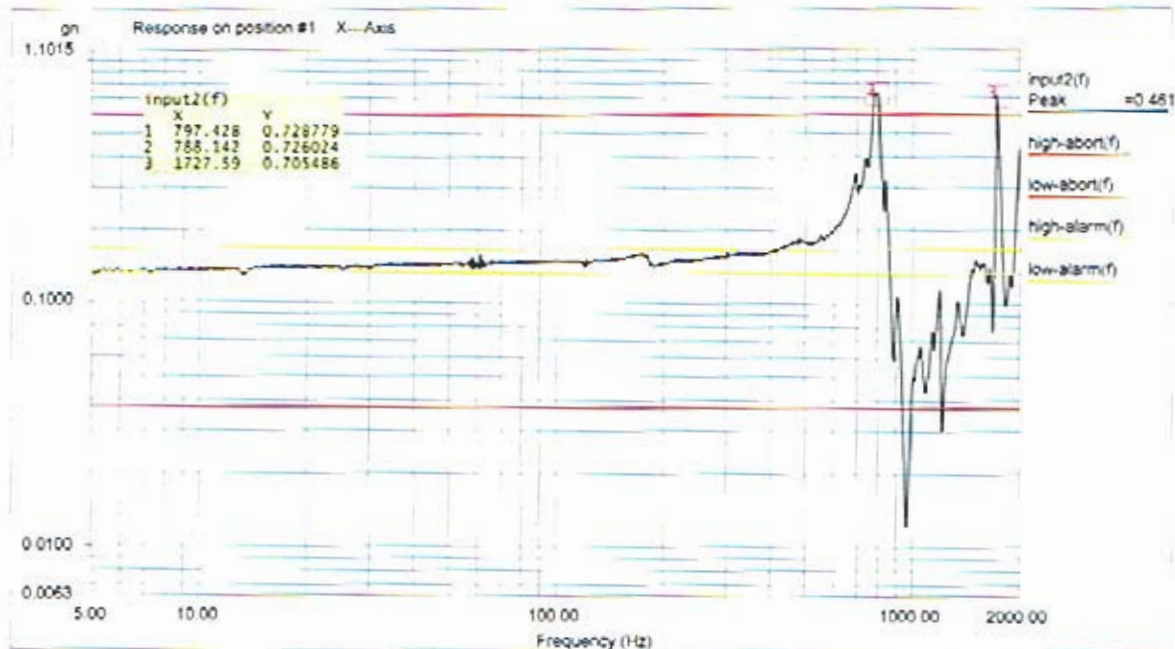


Level: 100 %  
Control RMS: 9.449133 gn Full Level Elapsed Time: 00:01:00 Lines: 400 Frame Time: 0.200000 Seconds  
Demand RMS: 8.915771 gn Remaining Time: 00:00:00 DOF: 154 dF: 5.000000 Hz  
Data saved at 02:36:39 PM, Monday, October 31, 2005 Report created at 02:36:40 PM, Monday, October 31, 2005



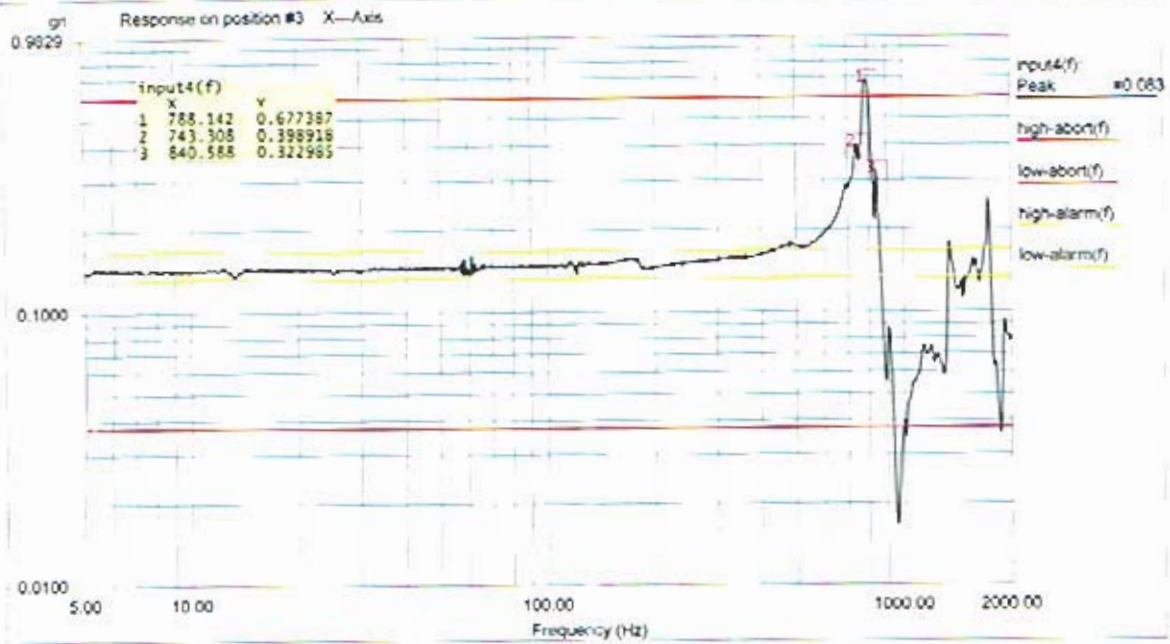
Level: 100 % Control Peak: 0.157301 gn Full Level Time: 00:04:19 Sweep Type: Logarithmic  
 Frequency: 1999.669067 Hz Demand Peak: 0.150000 gn Time Remaining: 00:00:00 Sweep Rate: 2 Oct/Min

Data saved at 02:42:13 PM, Monday, October 31, 2005 Report created at 02:42:14 PM, Monday, October 31, 2005



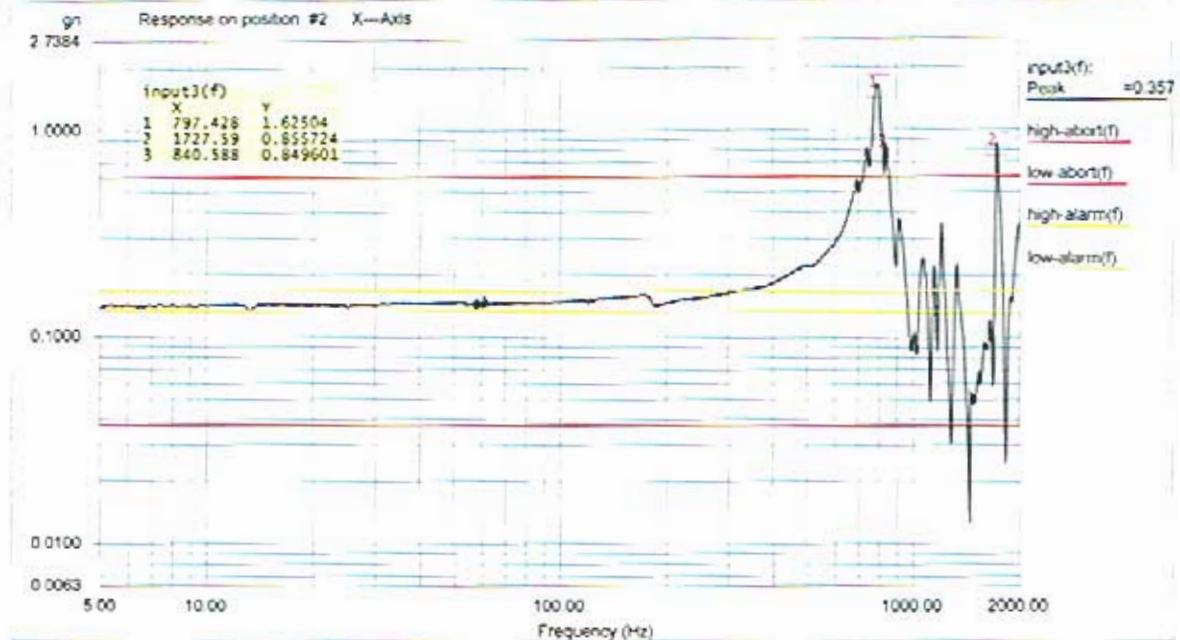
Level: 100 % Control Peak: 0.157301 gn Full Level Time: 00:04:19 Sweep Type: Logarithmic  
 Frequency: 1999.669067 Hz Demand Peak: 0.150000 gn Time Remaining: 00:00:00 Sweep Rate: 2 Oct/Min

Data saved at 02:42:13 PM, Monday, October 31, 2005 Report created at 02:42:14 PM, Monday, October 31, 2005



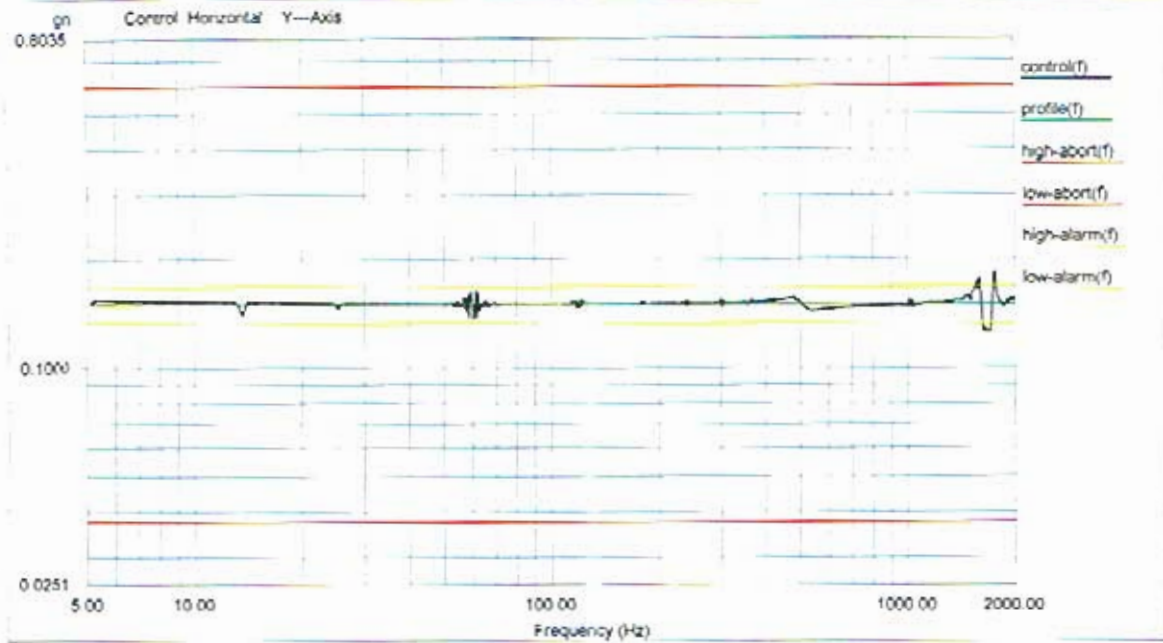
Level: 100 % Control Peak: 0.157301 gn Full Level Time: 00:04:19 Sweep Type: Logarithmic  
 Frequency: 1999.669067 Hz Demand Peak: 0.150000 gn Time Remaining: 00:00:00 Sweep Rate: 2 Oct/Min

Data saved at 02:42:13 PM, Monday, October 31, 2005 Report created at 02:42:14 PM, Monday, October 31, 2005



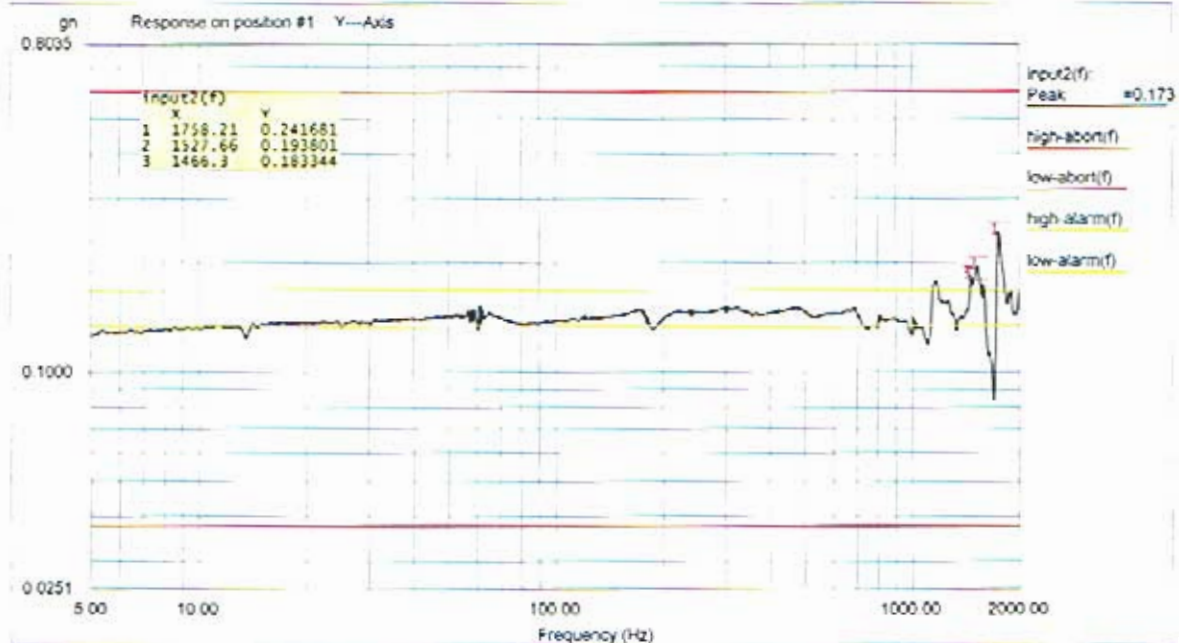
Level: 100 % Control Peak: 0.157301 gn Full Level Time: 00:04:19 Sweep Type: Logarithmic  
 Frequency: 1999.669067 Hz Demand Peak: 0.150000 gn Time Remaining: 00:00:00 Sweep Rate: 2 Oct/Min

Data saved at 02:42:13 PM, Monday, October 31, 2005 Report created at 02:42:14 PM, Monday, October 31, 2005



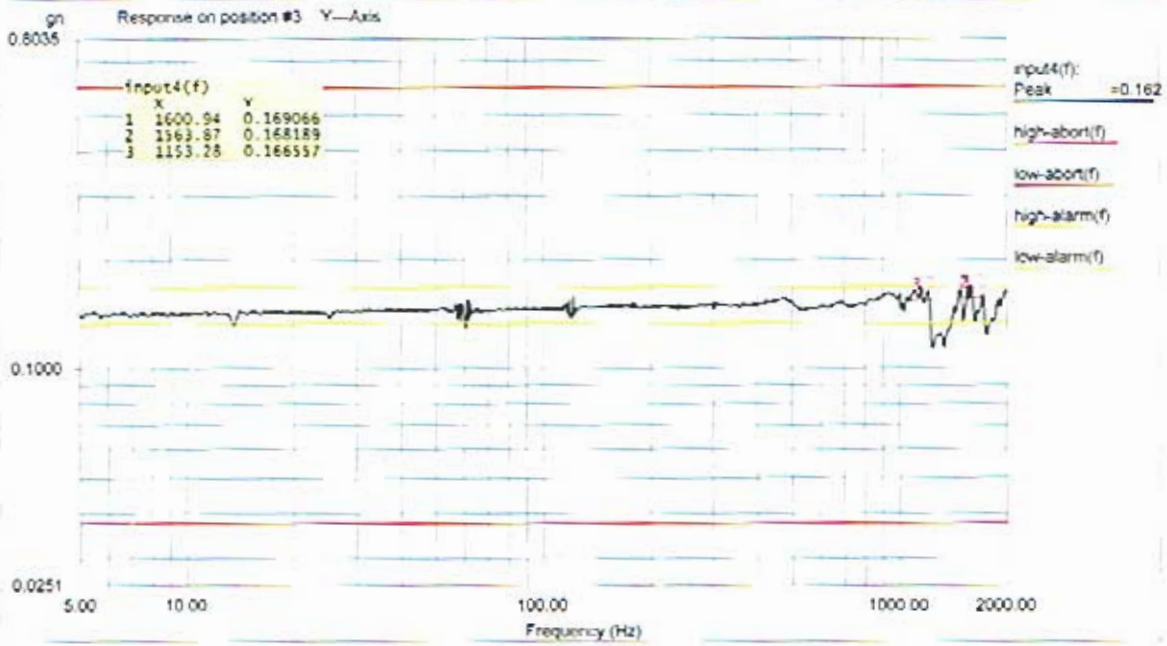
Level: 100 % Control Peak: 0.154901 gn Full Level Time: 00:04:19 Sweep Type: Logarithmic  
 Frequency: 1999.669067 Hz Demand Peak: 0.150000 gn Time Remaining: 00:00:00 Sweep Rate: 2 Oct/Min

Data saved at 03:01:01 PM, Monday, October 31, 2005 Report created at 03:01:02 PM, Monday, October 31, 2005



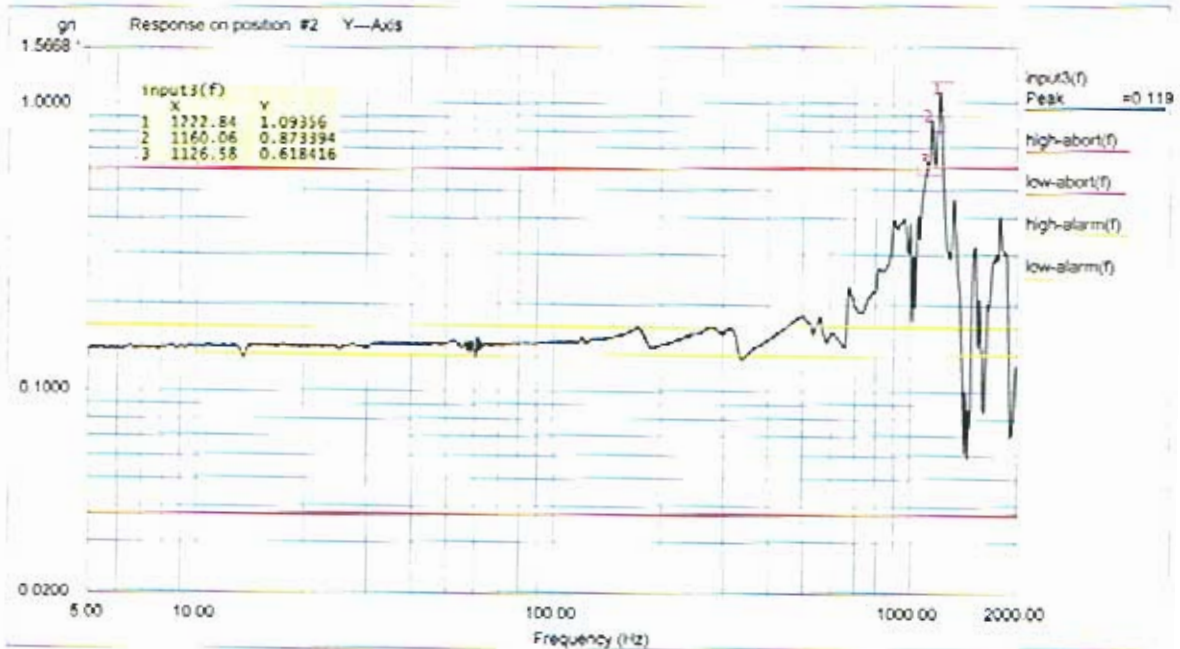
Level: 100 % Control Peak: 0.154901 gn Full Level Time: 00:04:19 Sweep Type: Logarithmic  
 Frequency: 1999.669067 Hz Demand Peak: 0.150000 gn Time Remaining: 00:00:00 Sweep Rate: 2 Oct/Min

Data saved at 03:01:01 PM, Monday, October 31, 2005 Report created at 03:01:02 PM, Monday, October 31, 2005



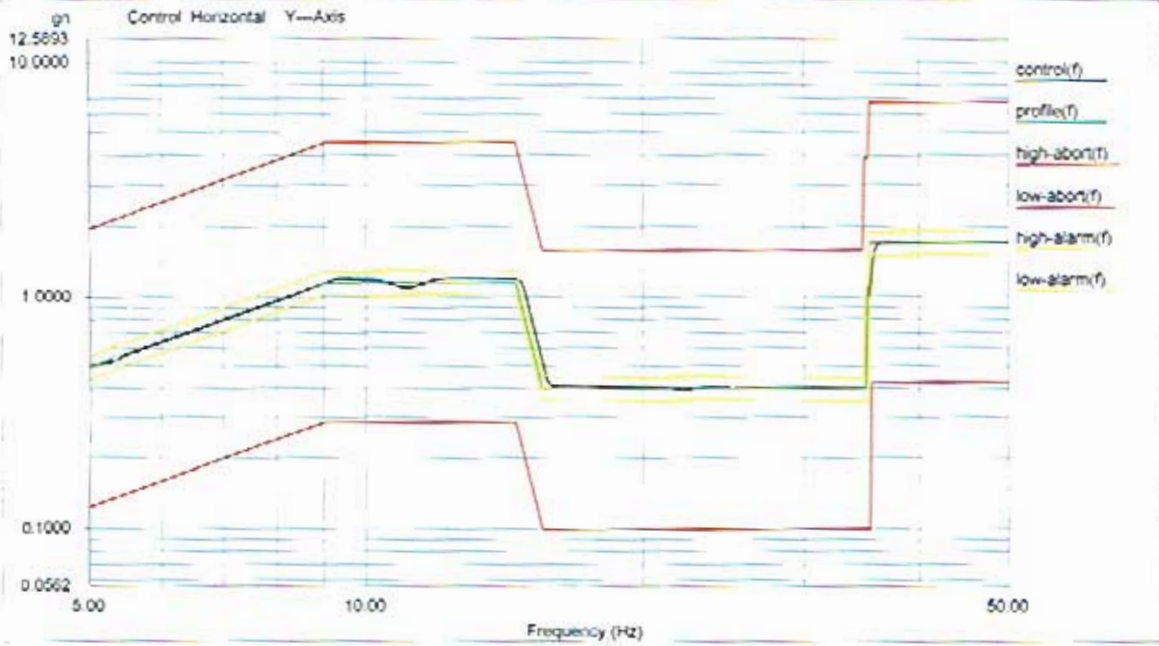
Level 100 % Control Peak: 0.154901 gn Full Level Time: 00:04:19 Sweep Type: Logarithmic  
 Frequency 1999.669067 Hz Demand Peak: 0.150000 gn Time Remaining: 00:00:00 Sweep Rate: 2 Oct/Min

Data saved at 03:01:01 PM, Monday, October 31, 2005 Report created at 03:01:02 PM, Monday, October 31, 2005



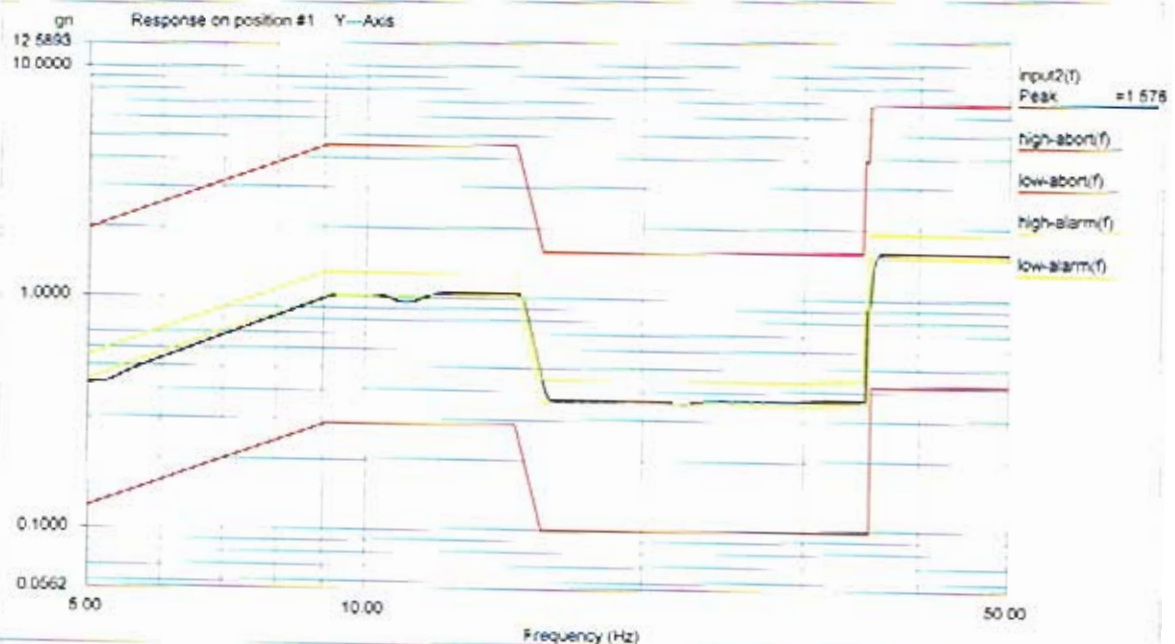
Level 100 % Control Peak: 0.154901 gn Full Level Time: 00:04:19 Sweep Type: Logarithmic  
 Frequency 1999.669067 Hz Demand Peak: 0.150000 gn Time Remaining: 00:00:00 Sweep Rate: 2 Oct/Min

Data saved at 03:01:01 PM, Monday, October 31, 2005 Report created at 03:01:02 PM, Monday, October 31, 2005



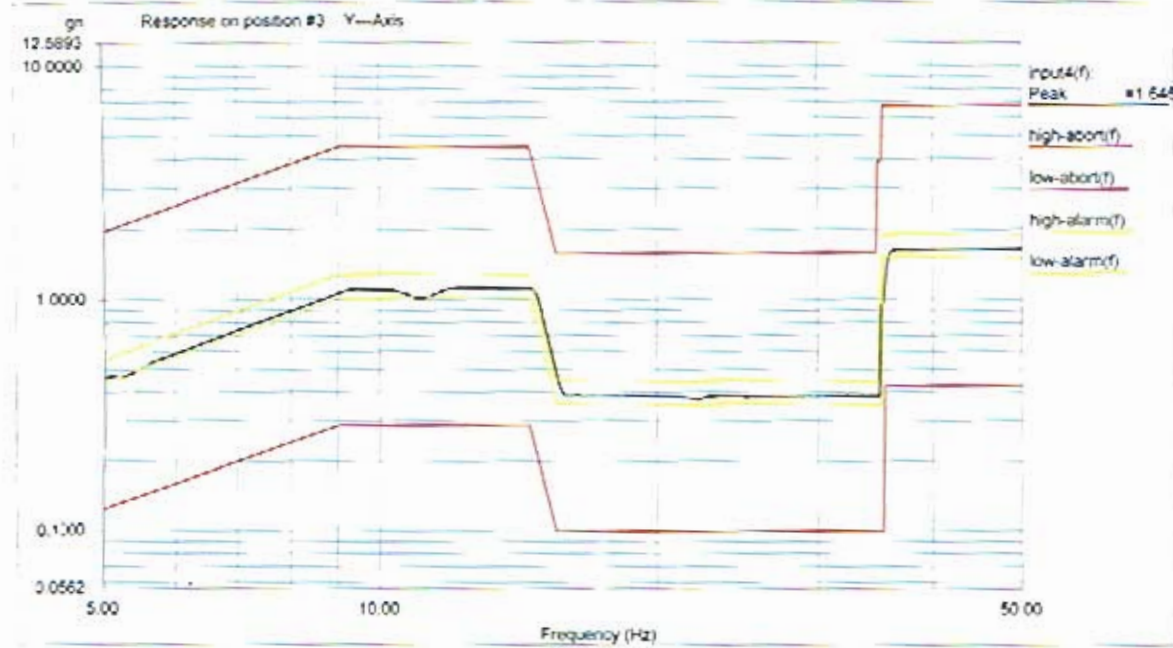
Level 100 % Control Peak: 1.703665 gn Full Level Time 00:01:02 Sweep Type: Logarithmic  
 Frequency 49.979610 Hz Demand Peak: 1.700000 gn Time Remaining: 00:00:00 Sweep Rate 4 Oct/Min

Data saved at 03:03:44 PM, Monday, October 31, 2005 Report created at 03:03:45 PM, Monday, October 31, 2005



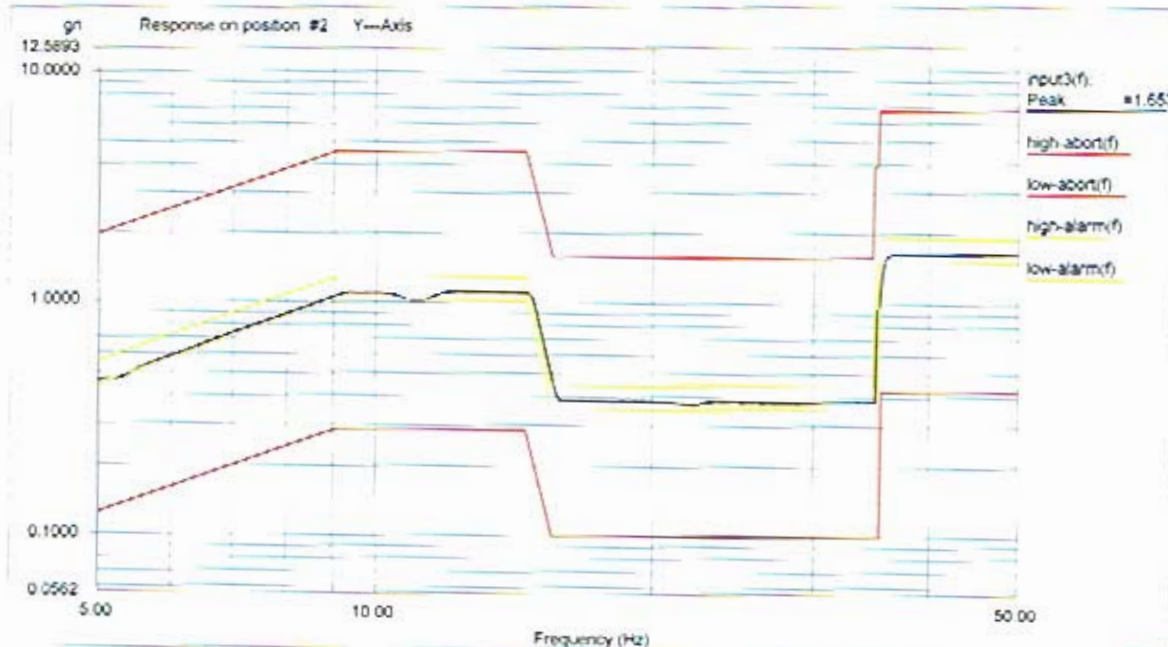
Level 100 % Control Peak: 1.703665 gn Full Level Time 00:01:02 Sweep Type: Logarithmic  
 Frequency 49.979610 Hz Demand Peak: 1.700000 gn Time Remaining: 00:00:00 Sweep Rate 4 Oct/Min

Data saved at 03:03:44 PM, Monday, October 31, 2005 Report created at 03:03:45 PM, Monday, October 31, 2005



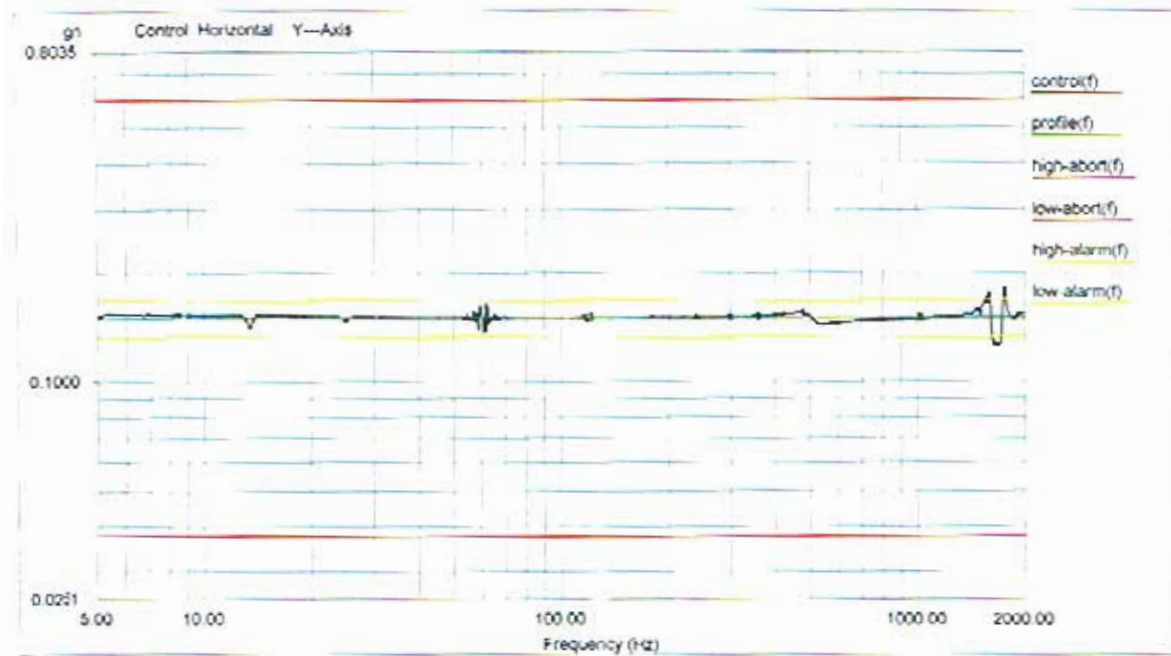
Level: 100% Control Peak: 1.703665 gn Full Level Time: 00:01:02 Sweep Type: Logarithmic  
 Frequency: 49.979610 Hz Demand Peak: 1.700000 gn Time Remaining: 00:00:00 Sweep Rate: 4 Oct/Min

Data saved at 03:03:44 PM, Monday, October 31, 2005 Report created at 03:03:45 PM, Monday, October 31, 2005



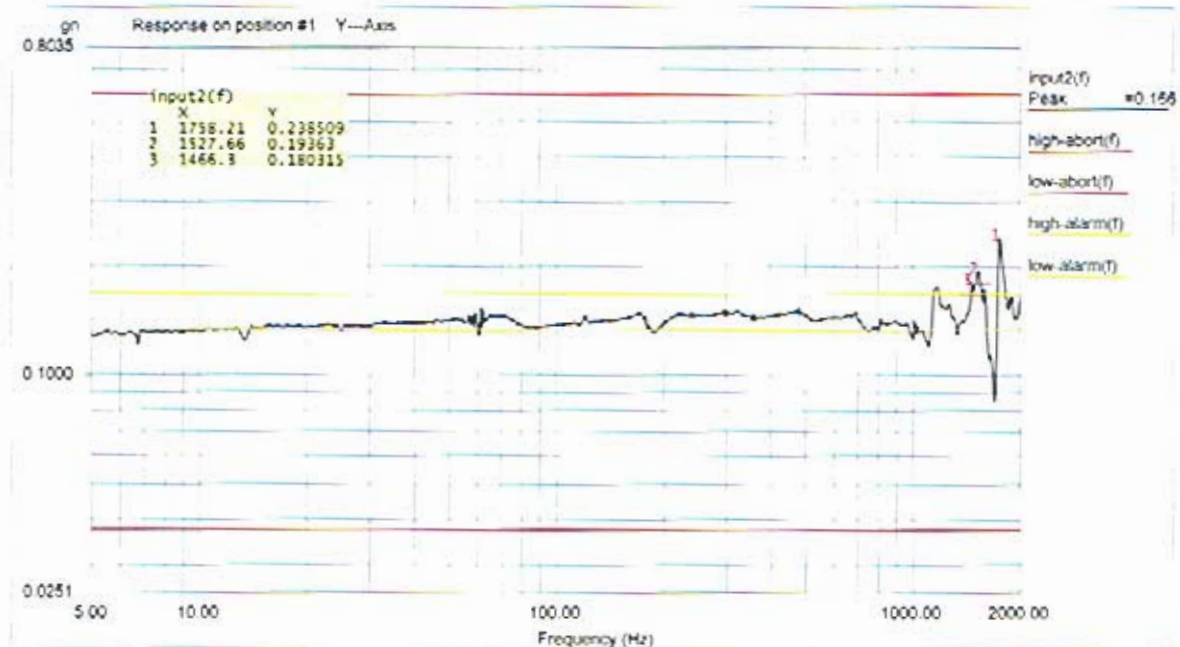
Level: 100% Control Peak: 1.703665 gn Full Level Time: 00:01:02 Sweep Type: Logarithmic  
 Frequency: 49.979610 Hz Demand Peak: 1.700000 gn Time Remaining: 00:00:00 Sweep Rate: 4 Oct/Min

Data saved at 03:03:44 PM, Monday, October 31, 2005 Report created at 03:03:45 PM, Monday, October 31, 2005



Level: 100 % Control Peak: 0.154388 gn Full Level Time: 00:04:19 Sweep Type: Logarithmic  
 Frequency: 1999.669067 Hz Demand Peak: 0.150000 gn Time Remaining: 00:00:00 Sweep Rate: 2 Oct/Min

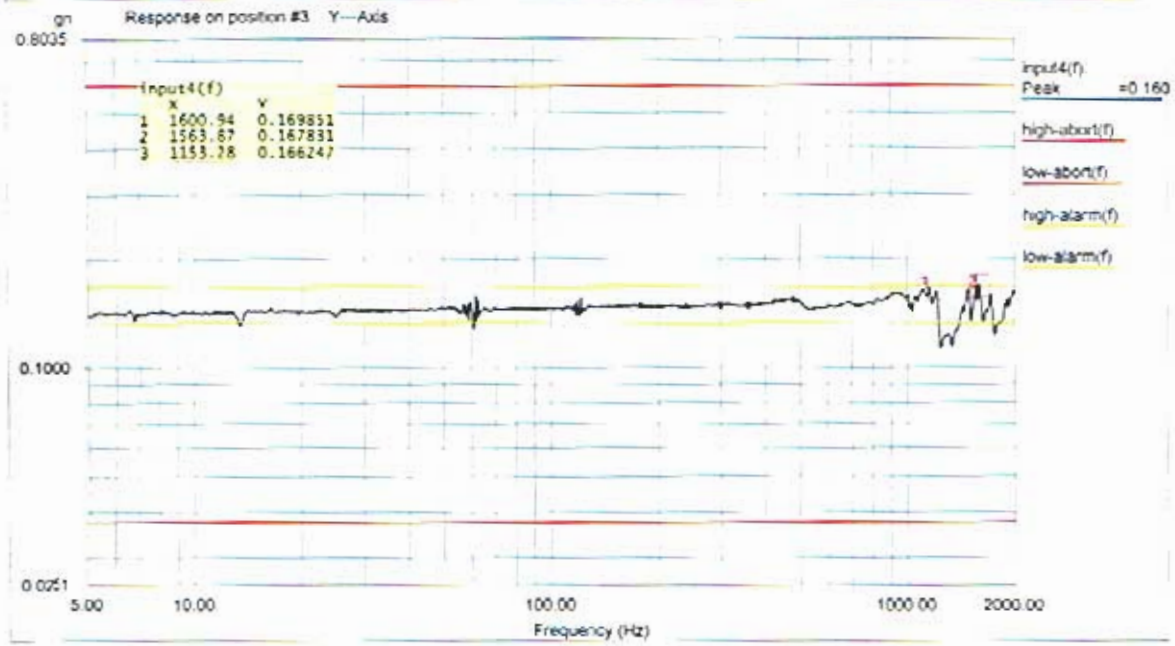
Data saved at 03:09:02 PM, Monday, October 31, 2005 Report created at 03:09:03 PM, Monday, October 31, 2005



Level: 100 % Control Peak: 0.154388 gn Full Level Time: 00:04:19 Sweep Type: Logarithmic  
 Frequency: 1999.669067 Hz Demand Peak: 0.150000 gn Time Remaining: 00:00:00 Sweep Rate: 2 Oct/Min

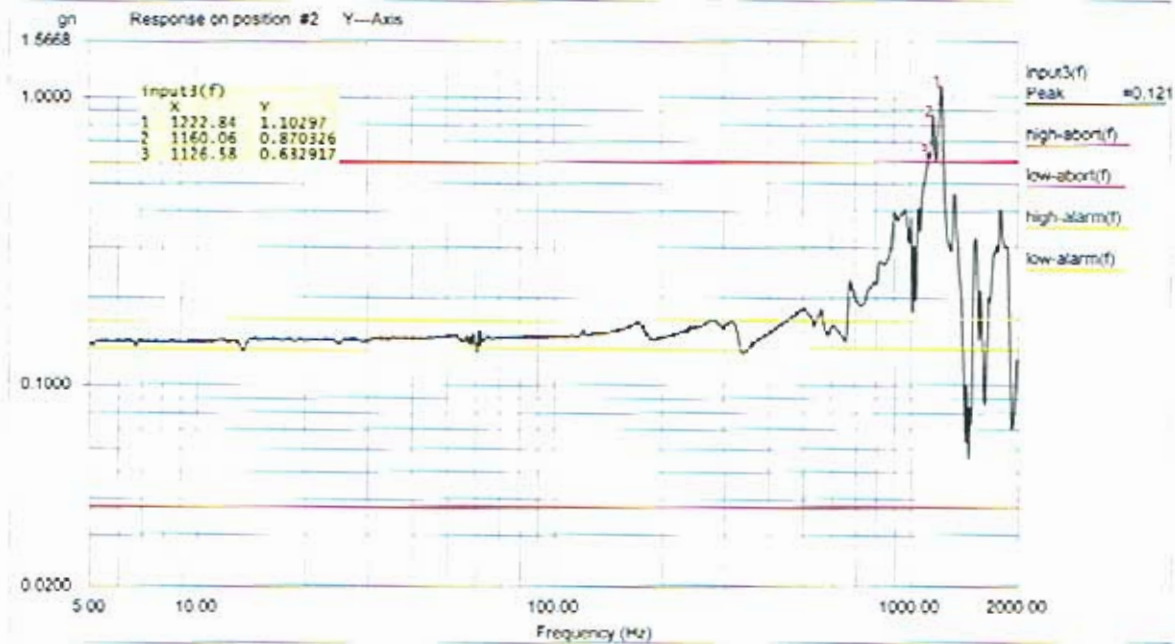
Data saved at 03:09:02 PM, Monday, October 31, 2005 Report created at 03:09:03 PM, Monday, October 31, 2005





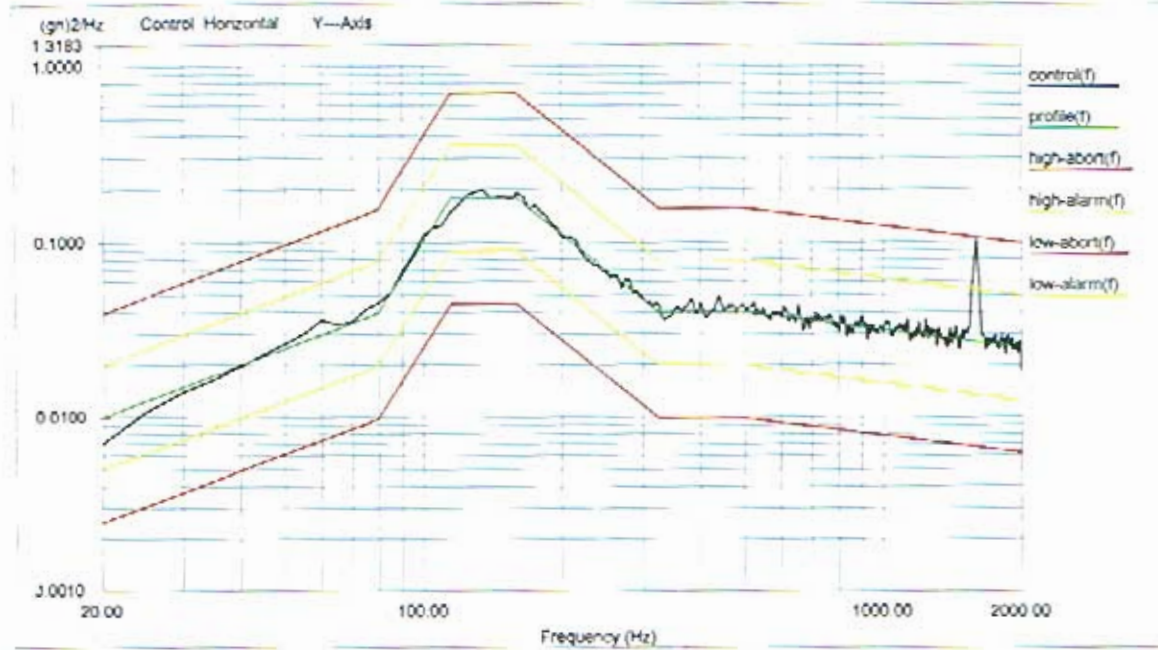
Level: 100 % Control Peak: 0.154288 gn Full Level Time: 00:04:19 Sweep Type: Logarithmic  
 Frequency: 1999.669067 Hz Demand Peak: 0.150000 gn Time Remaining: 00:00:00 Sweep Rate: 2 Oct/Min

Data saved at 03:09:02 PM, Monday, October 31, 2005 Report created at 03:09:03 PM, Monday, October 31, 2005



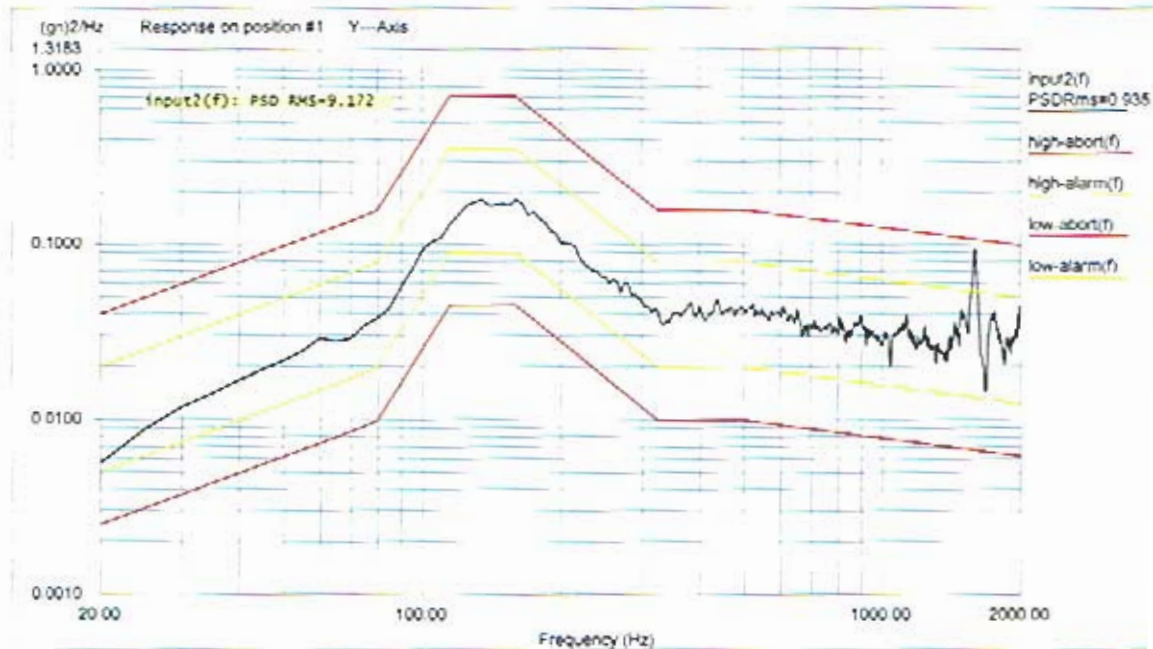
Level: 100 % Control Peak: 0.154388 gn Full Level Time: 00:04:19 Sweep Type: Logarithmic  
 Frequency: 1999.669067 Hz Demand Peak: 0.150000 gn Time Remaining: 00:00:00 Sweep Rate: 2 Oct/Min

Data saved at 03:09:02 PM, Monday, October 31, 2005 Report created at 03:09:03 PM, Monday, October 31, 2005



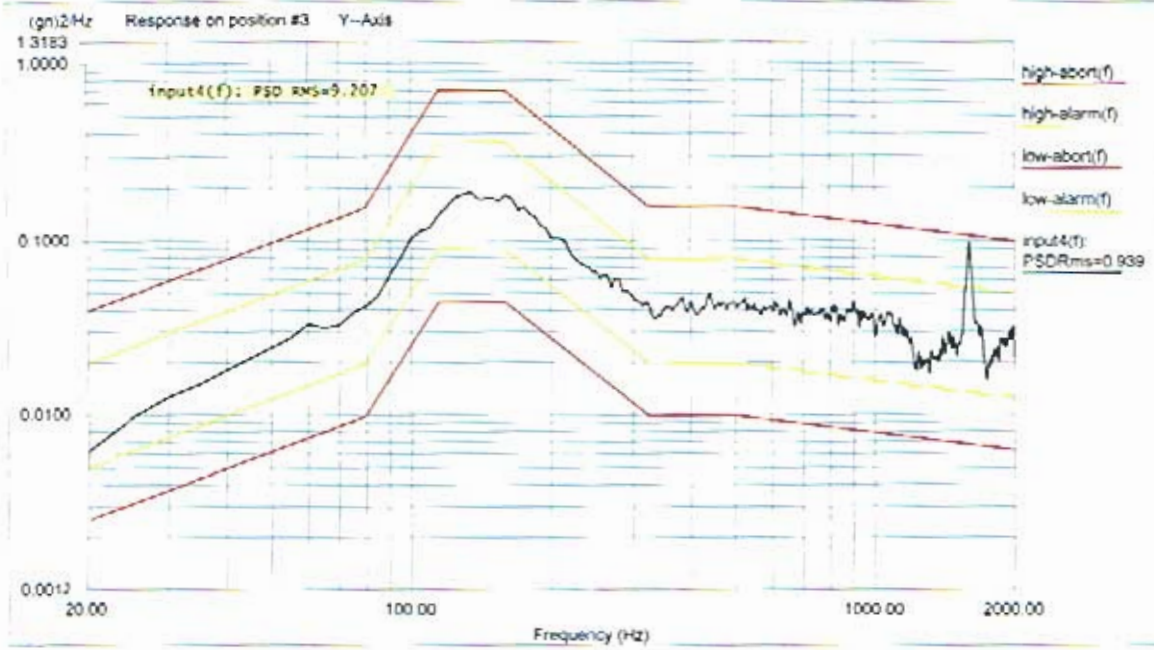
Level: 100 %  
 Control RMS: 9.378161 gn Full Level Elapsed Time: 00:01:00 Lines: 400 Frame Time: 0.200000 Seconds  
 Demand RMS: 8.915771 gn Remaining Time: 00:00:00 DOF: 154 dF: 5.000000 Hz

Data saved at 03:14:07 PM, Monday, October 31, 2005 Report created at 03:14:08 PM, Monday, October 31, 2005



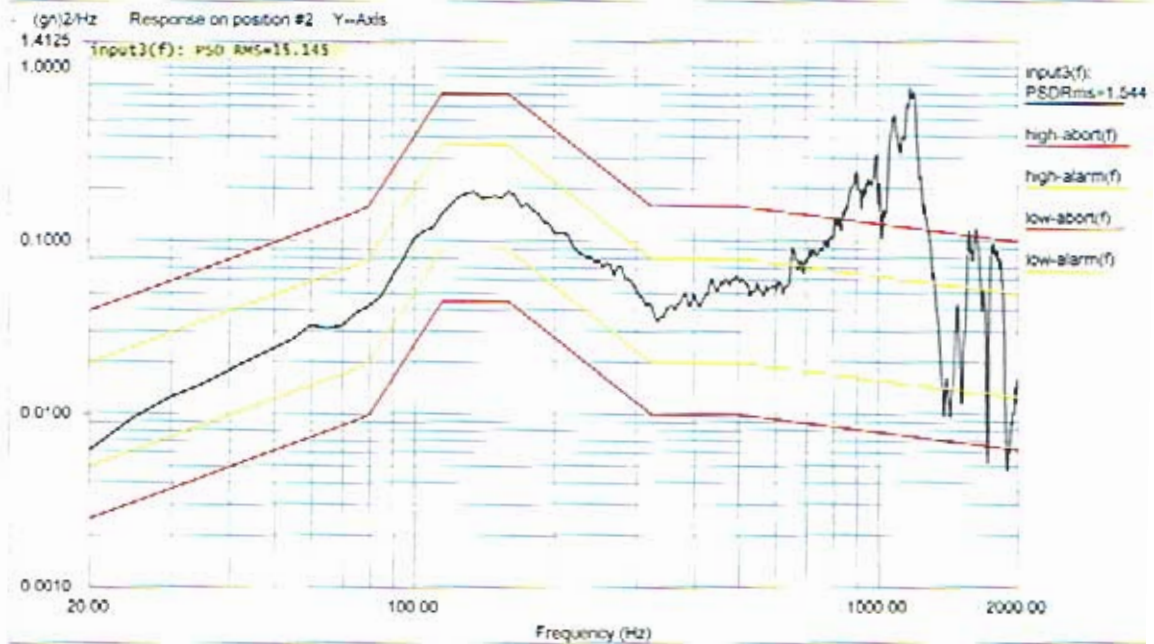
Level: 100 %  
 Control RMS: 9.378161 gn Full Level Elapsed Time: 00:01:00 Lines: 400 Frame Time: 0.200000 Seconds  
 Demand RMS: 8.915771 gn Remaining Time: 00:00:00 DOF: 154 dF: 5.000000 Hz

Data saved at 03:14:08 PM, Monday, October 31, 2005 Report created at 03:14:08 PM, Monday, October 31, 2005



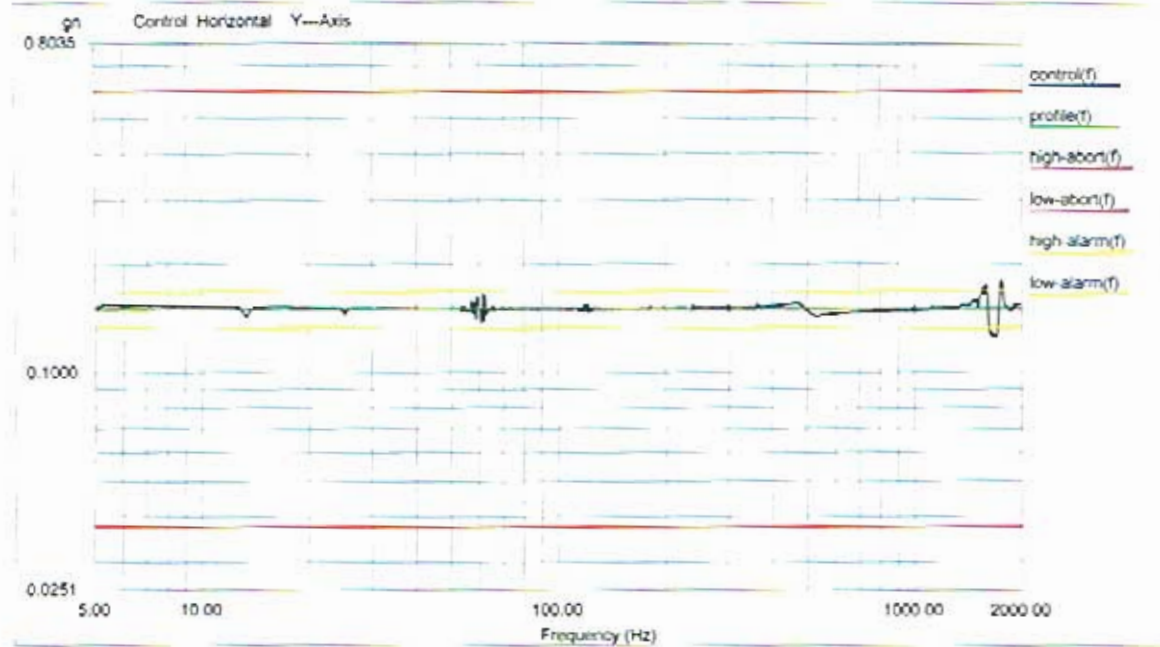
Level: 100 %  
 Control RMS: 9.378161 gm Full Level Elapsed Time: 00:01:00 Lines: 400 Frame Time: 0.200000 Seconds  
 Demand RMS: 8.915771 gm Remaining Time: 00:00:00 IXIF: 154 dt: 5.000000 Hz

Data saved at 03:14:08 PM, Monday, October 31, 2005 Report created at 03:14:08 PM, Monday, October 31, 2005



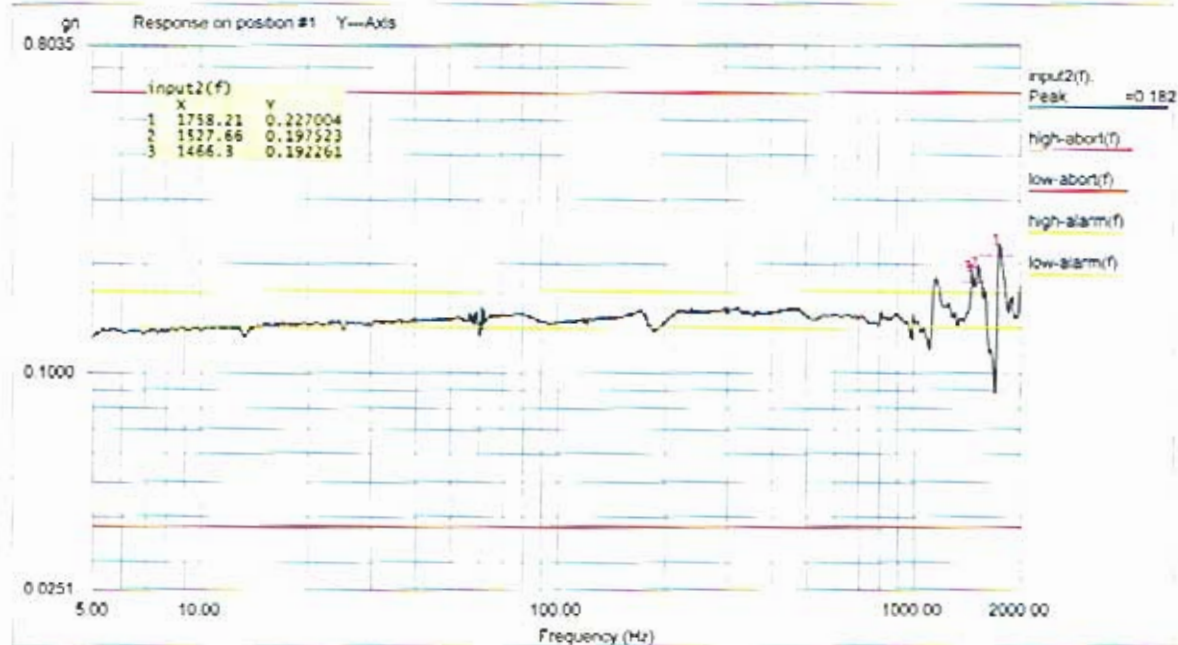
Level: 100 %  
 Control RMS: 9.378161 gm Full Level Elapsed Time: 00:01:00 Lines: 400 Frame Time: 0.200000 Seconds  
 Demand RMS: 8.915771 gm Remaining Time: 00:00:00 IXIF: 154 dt: 5.000000 Hz

Data saved at 03:14:08 PM, Monday, October 31, 2005 Report created at 03:14:08 PM, Monday, October 31, 2005



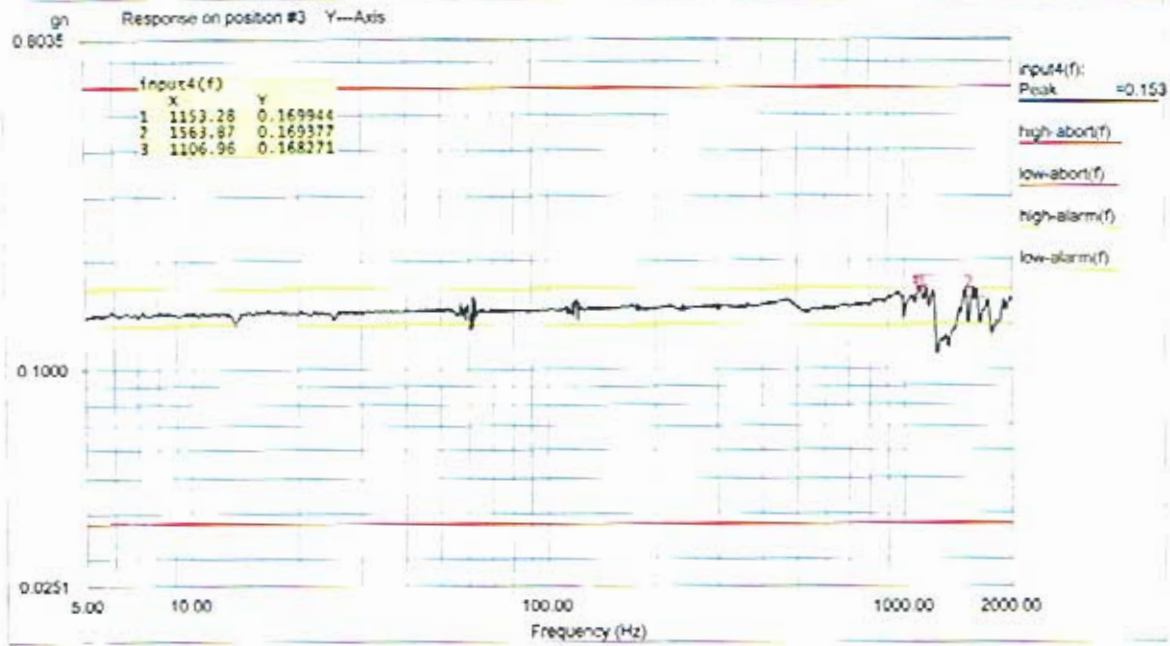
Level: 100 % Control Peak: 0.155218 gn Full Level Time: 00:04:19 Sweep Type: Logarithmic  
 Frequency: 1999.669067 Hz Demand Peak: 0.150000 gn Time Remaining: 00:00:00 Sweep Rate: 2 Oct/Min

Data saved at 03:20:09 PM, Monday, October 31, 2005 Report created at 03:20:10 PM, Monday, October 31, 2005



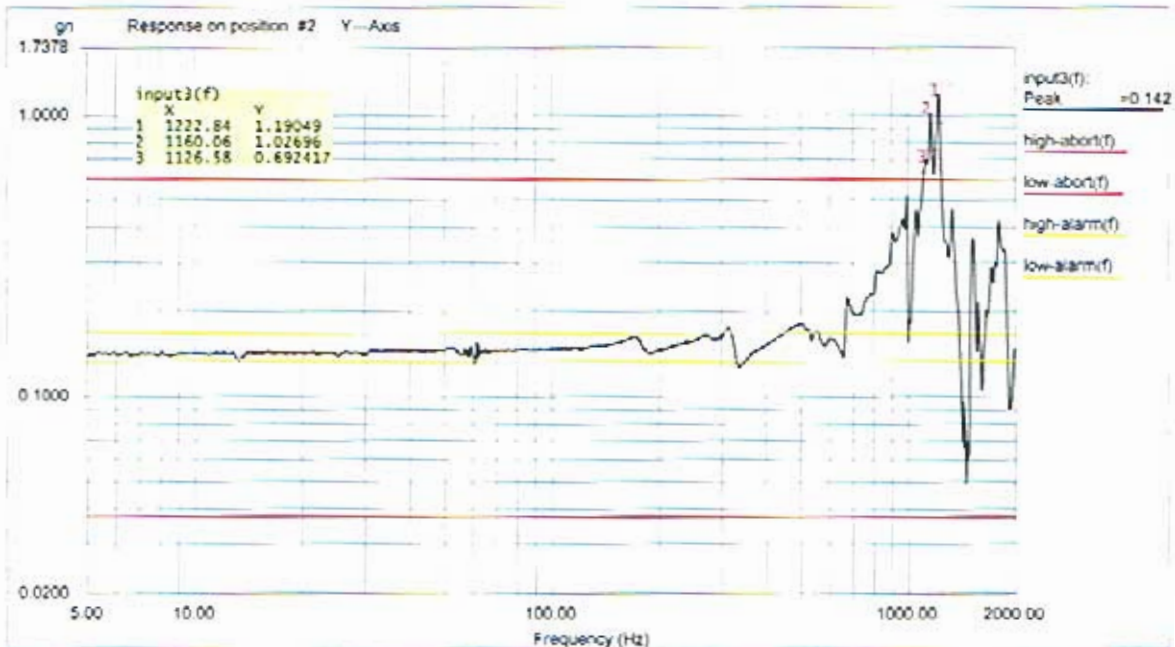
Level: 100 % Control Peak: 0.155218 gn Full Level Time: 00:04:19 Sweep Type: Logarithmic  
 Frequency: 1999.669067 Hz Demand Peak: 0.150000 gn Time Remaining: 00:00:00 Sweep Rate: 2 Oct/Min

Data saved at 03:20:09 PM, Monday, October 31, 2005 Report created at 03:20:10 PM, Monday, October 31, 2005



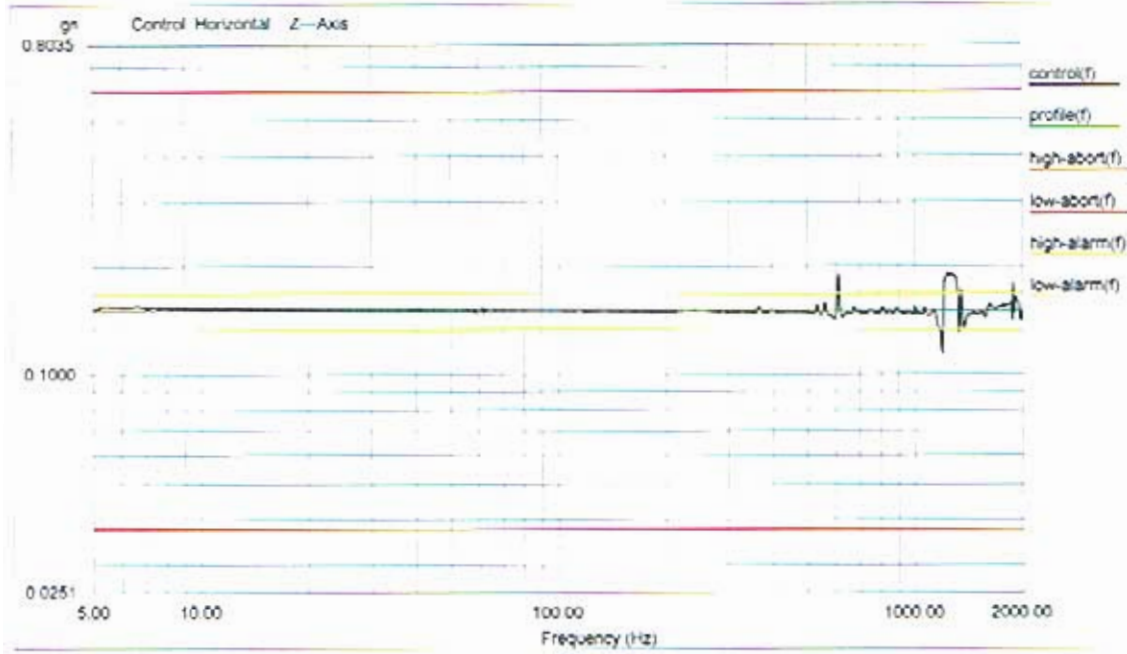
Level: 100 % Control Peak: 0.155218 gn Full Level Time: 00:04:19 Sweep Type: Logarithmic  
 Frequency: 1999.669067 Hz Demand Peak: 0.150000 gn Time Remaining: 00:00:00 Sweep Rate: 2 Oct/Min

Data saved at 03:20:09 PM, Monday, October 31, 2005 Report created at 03:20:10 PM, Monday, October 31, 2005



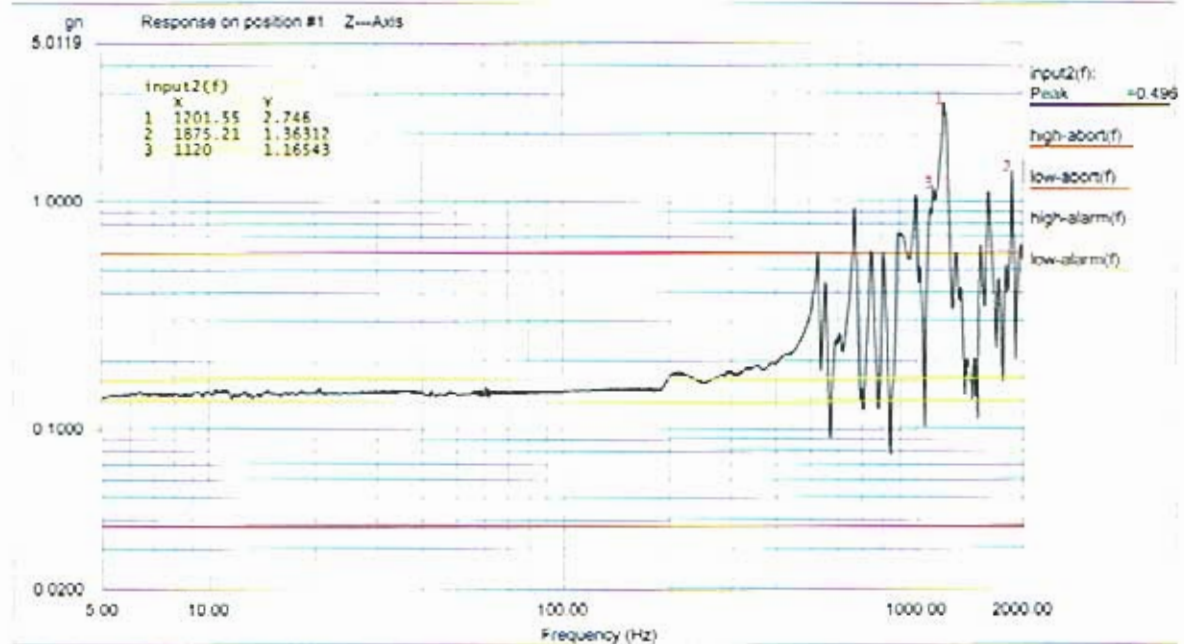
Level: 100 % Control Peak: 0.155218 gn Full Level Time: 00:04:19 Sweep Type: Logarithmic  
 Frequency: 1999.669067 Hz Demand Peak: 0.150000 gn Time Remaining: 00:00:00 Sweep Rate: 2 Oct/Min

Data saved at 03:20:09 PM, Monday, October 31, 2005 Report created at 03:20:10 PM, Monday, October 31, 2005



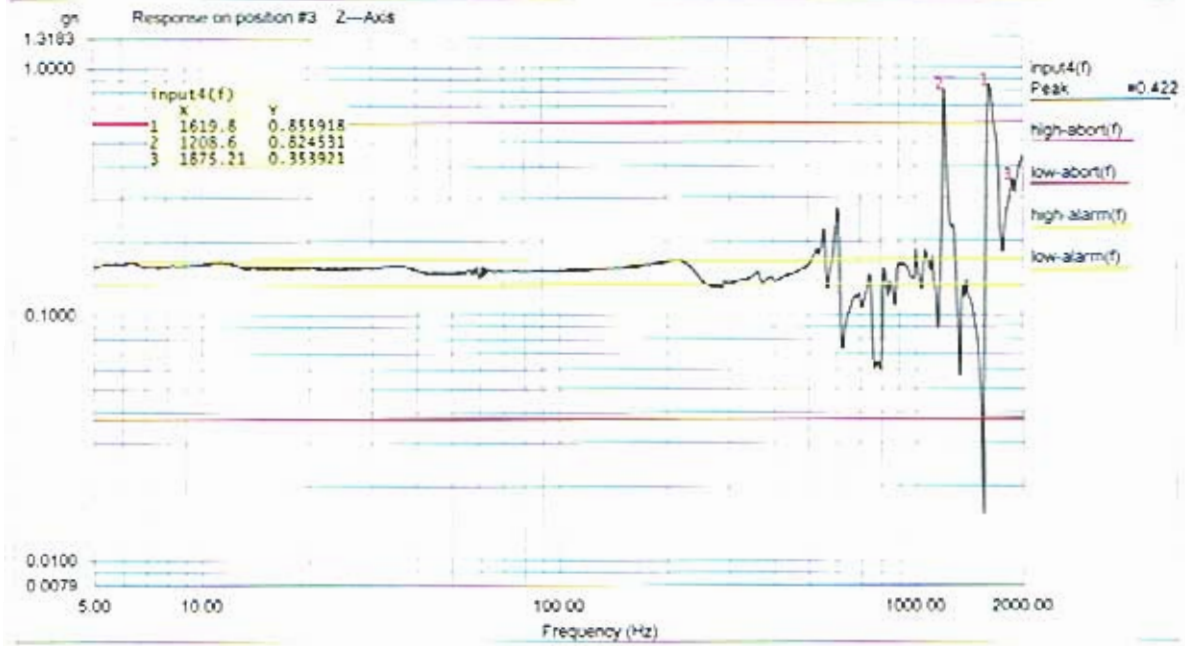
Level: 100 % Control Peak: 0.149551 gn Full Level Time: 00:04:19 Sweep Type: Logarithmic  
 Frequency: 1999.669067 Hz Demand Peak: 0.150000 gn Time Remaining: 00:00:00 Sweep Rate: 2 Oct/Min

Data saved at 10:06:15 AM, Tuesday, November 01, 2005 Report created at 10:06:17 AM, Tuesday, November 1, 2005



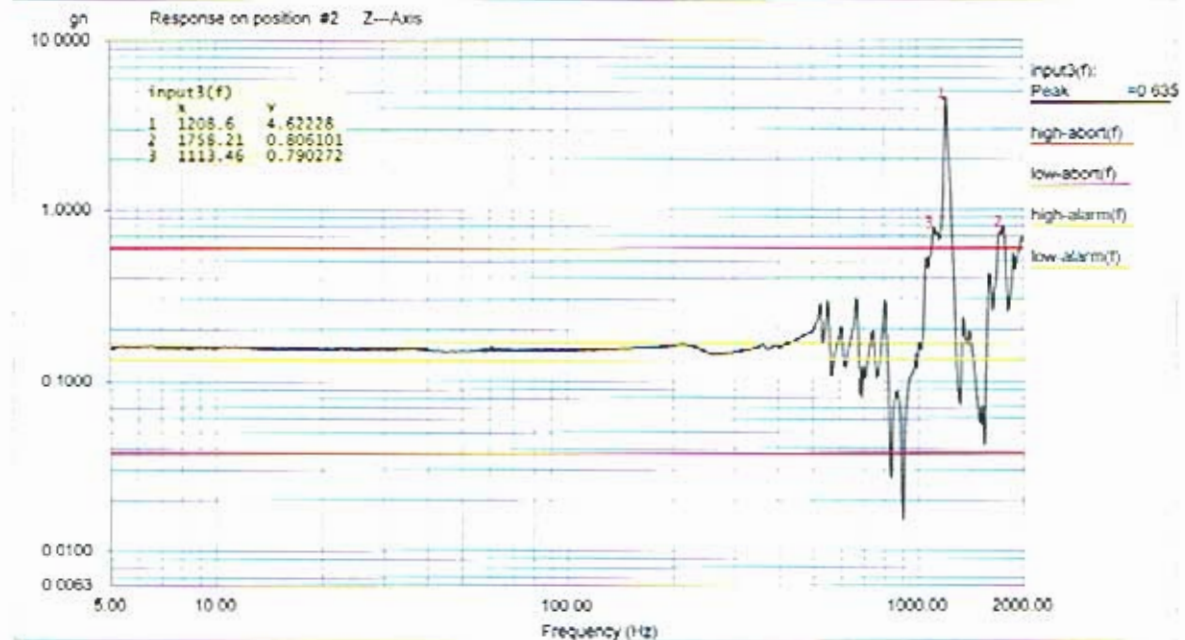
Level: 100 % Control Peak: 0.149551 gn Full Level Time: 00:04:19 Sweep Type: Logarithmic  
 Frequency: 1999.669067 Hz Demand Peak: 0.150000 gn Time Remaining: 00:00:00 Sweep Rate: 2 Oct/Min

Data saved at 10:06:15 AM, Tuesday, November 01, 2005 Report created at 10:06:17 AM, Tuesday, November 1, 2005



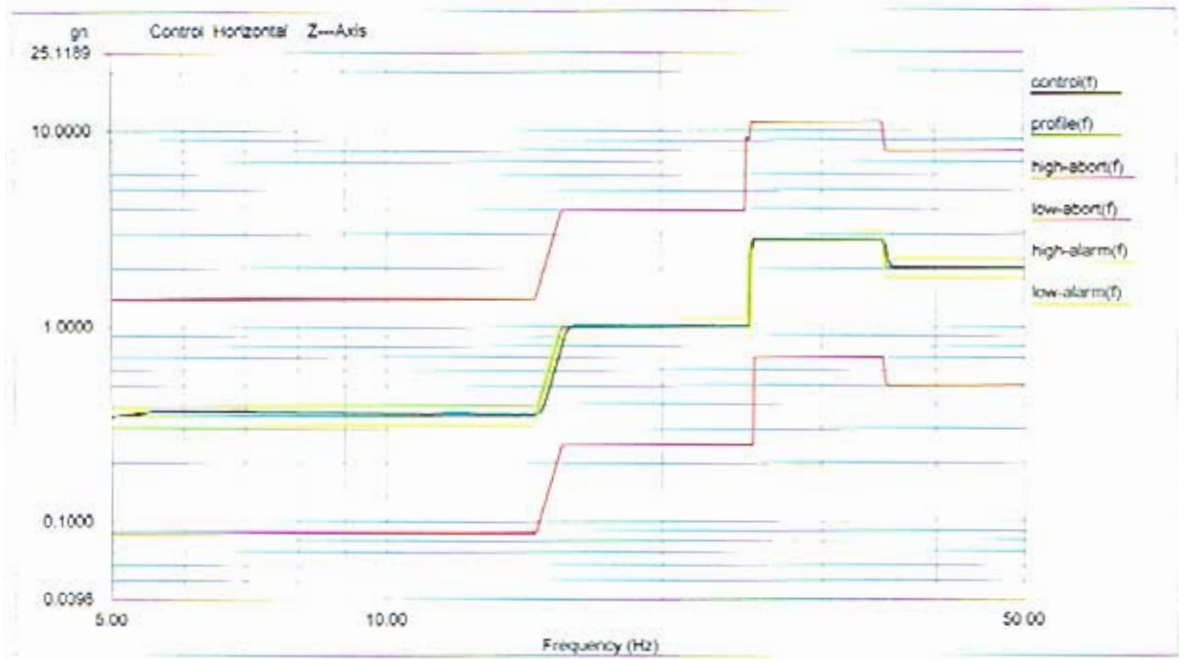
Level: 100 % Control Peak: 0.149551 gn Full Level Time: 00:04:19 Sweep Type: Logarithmic  
 Frequency: 1999.669067 Hz Demand Peak: 0.150000 gn Time Remaining: 00:00:00 Sweep Rate: 2 Oct/Min

Data saved at 10:06:15 AM, Tuesday, November 01, 2005 Report created at 10:06:17 AM, Tuesday, November 1, 2005



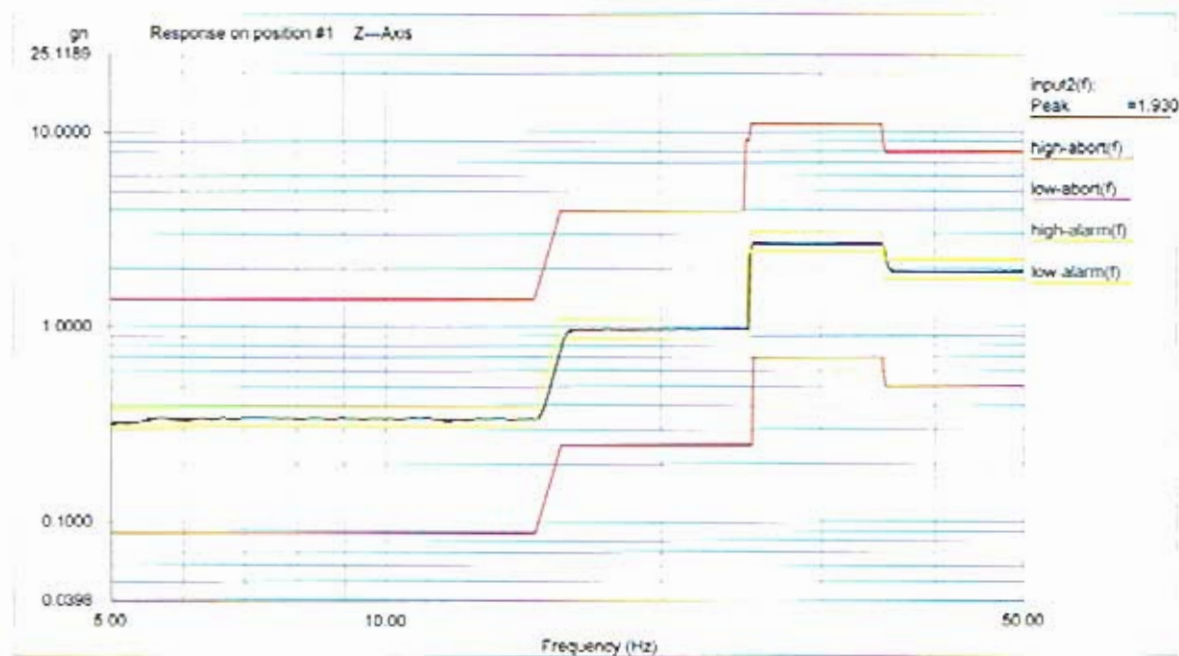
Level: 100 % Control Peak: 0.149551 gn Full Level Time: 00:04:19 Sweep Type: Logarithmic  
 Frequency: 1999.669067 Hz Demand Peak: 0.150000 gn Time Remaining: 00:00:00 Sweep Rate: 2 Oct/Min

Data saved at 10:06:16 AM, Tuesday, November 01, 2005 Report created at 10:06:17 AM, Tuesday, November 1, 2005



Level: 100 % Control Peak: 2.014026 gn Full Level Time: 00:01:02 Sweep Type: Logarithmic  
 Frequency: 49.979610 Hz Demand Peak: 2.000000 gn Time Remaining: 00:00:00 Sweep Rate: 4 Oct/Min

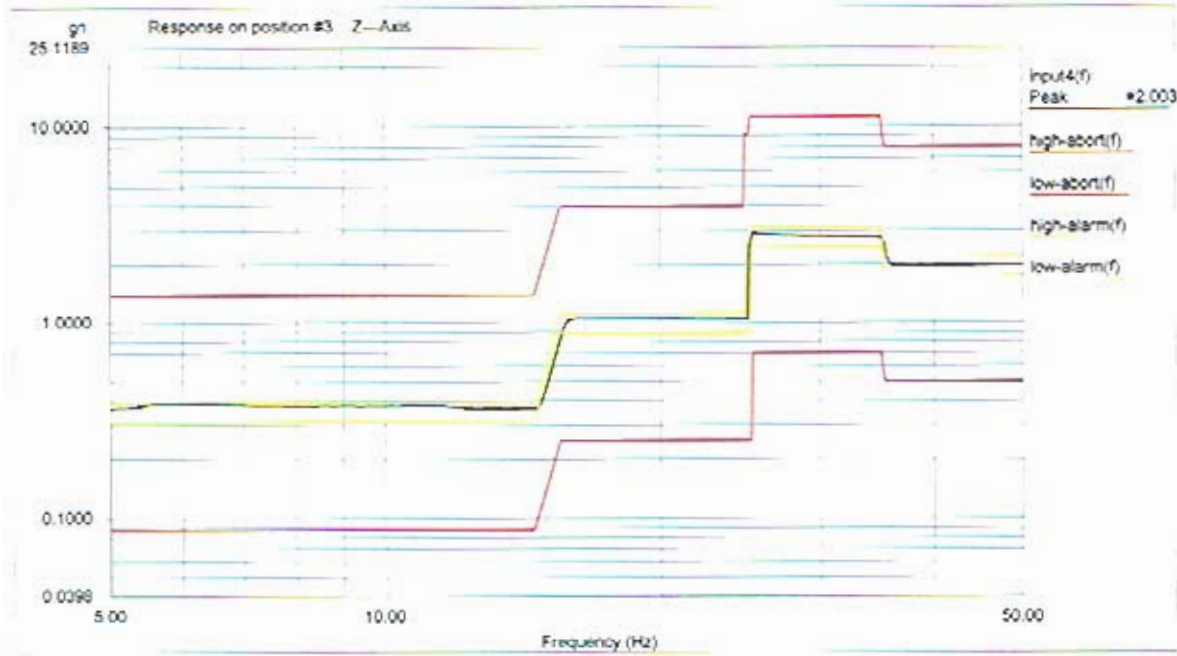
Data saved at 10:16:40 AM, Tuesday, November 01, 2005 Report created at 10:16:41 AM, Tuesday, November 1, 2005



Level: 100 % Control Peak: 2.014026 gn Full Level Time: 00:01:02 Sweep Type: Logarithmic  
 Frequency: 49.979610 Hz Demand Peak: 2.000000 gn Time Remaining: 00:00:00 Sweep Rate: 4 Oct/Min

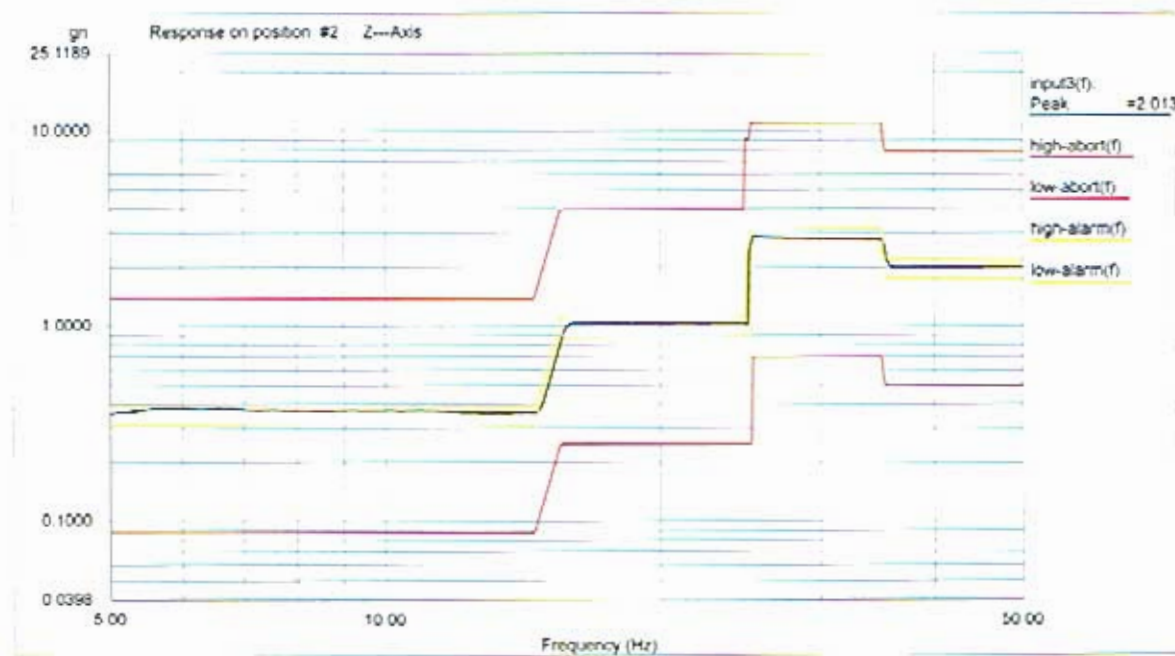
Data saved at 10:16:40 AM, Tuesday, November 01, 2005 Report created at 10:16:41 AM, Tuesday, November 1, 2005





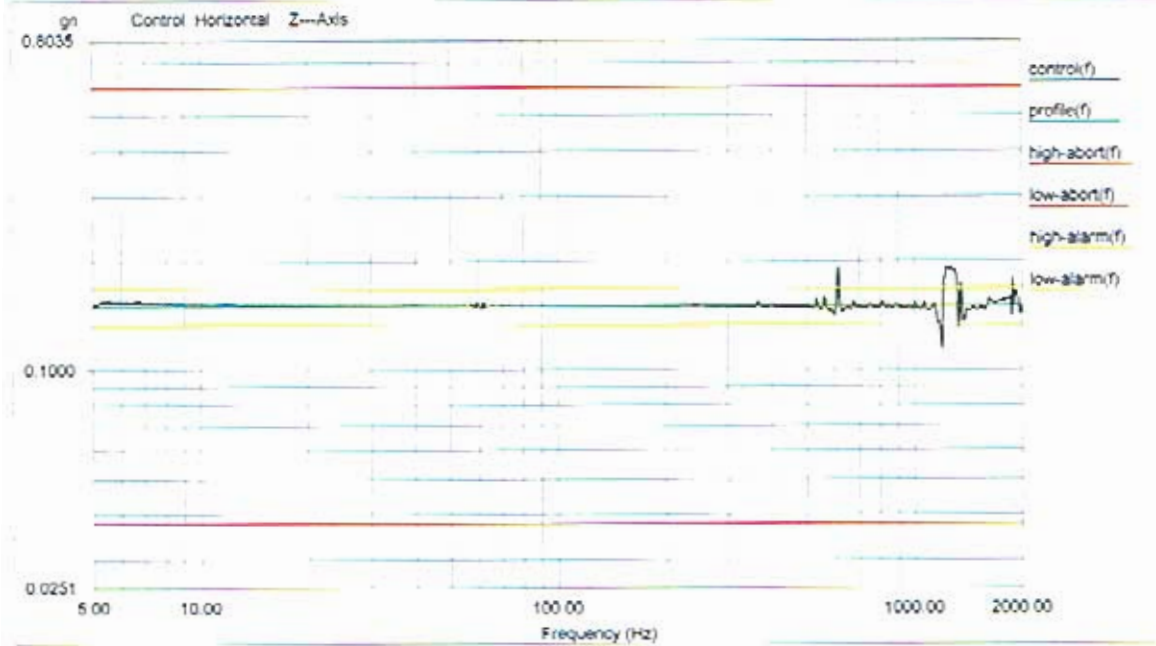
Level: 100 % Control Peak: 2.014026 gn Full Level Time: 00:01:02 Sweep Type: Logarithmic  
 Frequency: 49.979610 Hz Demand Peak: 2.000000 gn Time Remaining: 00:00:00 Sweep Rate: 4 Oct/Min

Data saved at 10:16:40 AM, Tuesday, November 01, 2005 Report created at 10:16:41 AM, Tuesday, November 1, 2005



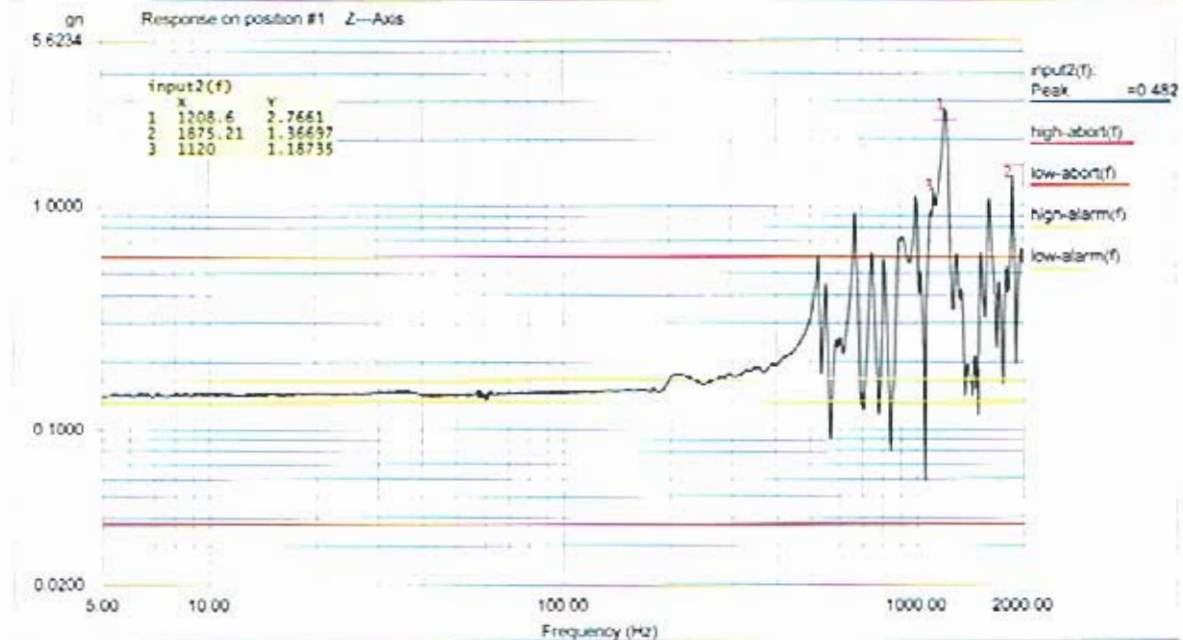
Level: 100 % Control Peak: 2.014026 gn Full Level Time: 00:01:02 Sweep Type: Logarithmic  
 Frequency: 49.979610 Hz Demand Peak: 2.000000 gn Time Remaining: 00:00:00 Sweep Rate: 4 Oct/Min

Data saved at 10:16:40 AM, Tuesday, November 01, 2005 Report created at 10:16:41 AM, Tuesday, November 1, 2005



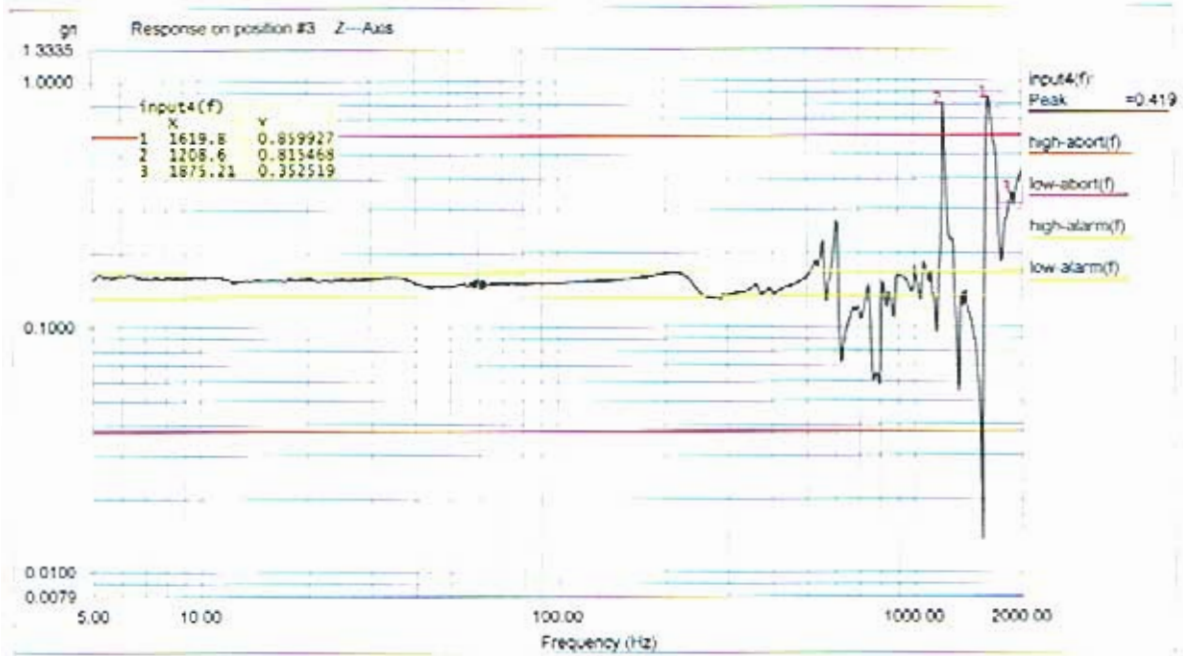
Level: 100 % Control Peak: 0.148830 gn Full Level Time: 00:04:19 Sweep Type: Logarithmic  
 Frequency: 1999.669067 Hz Demand Peak: 0.150000 gn Time Remaining: 00:00:00 Sweep Rate: 2 Oct/Min

Data saved at 10:22:43 AM, Tuesday, November 01, 2005 Report created at 10:22:44 AM, Tuesday, November 1, 2005



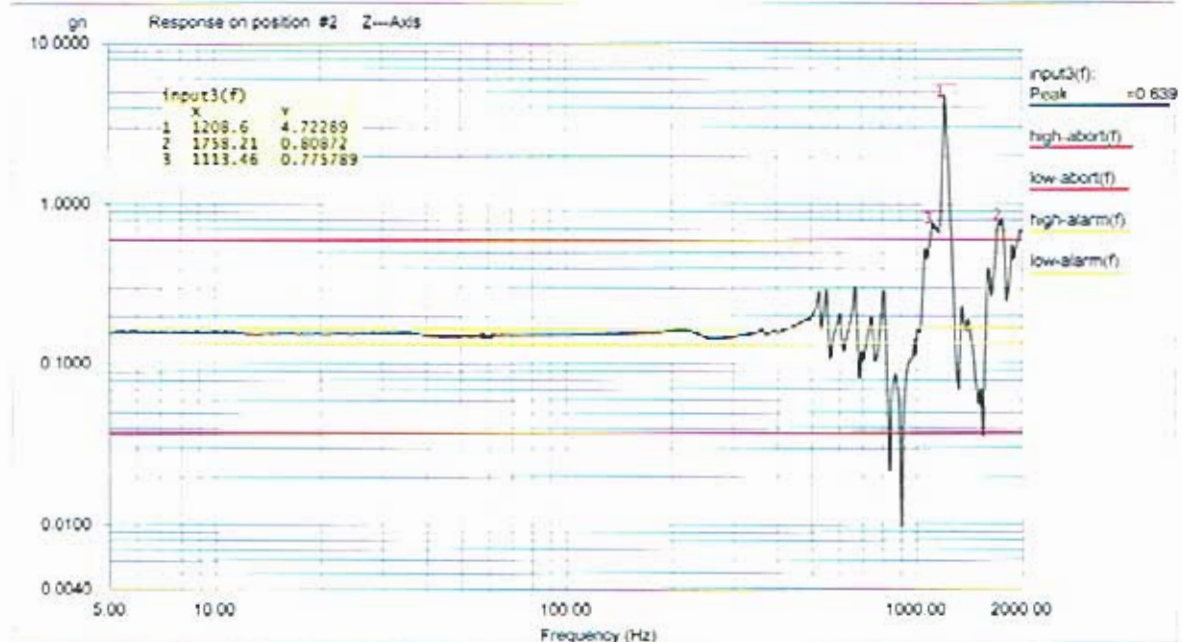
Level: 100 % Control Peak: 0.148830 gn Full Level Time: 00:04:19 Sweep Type: Logarithmic  
 Frequency: 1999.669067 Hz Demand Peak: 0.150000 gn Time Remaining: 00:00:00 Sweep Rate: 2 Oct/Min

Data saved at 10:22:43 AM, Tuesday, November 01, 2005 Report created at 10:22:44 AM, Tuesday, November 1, 2005



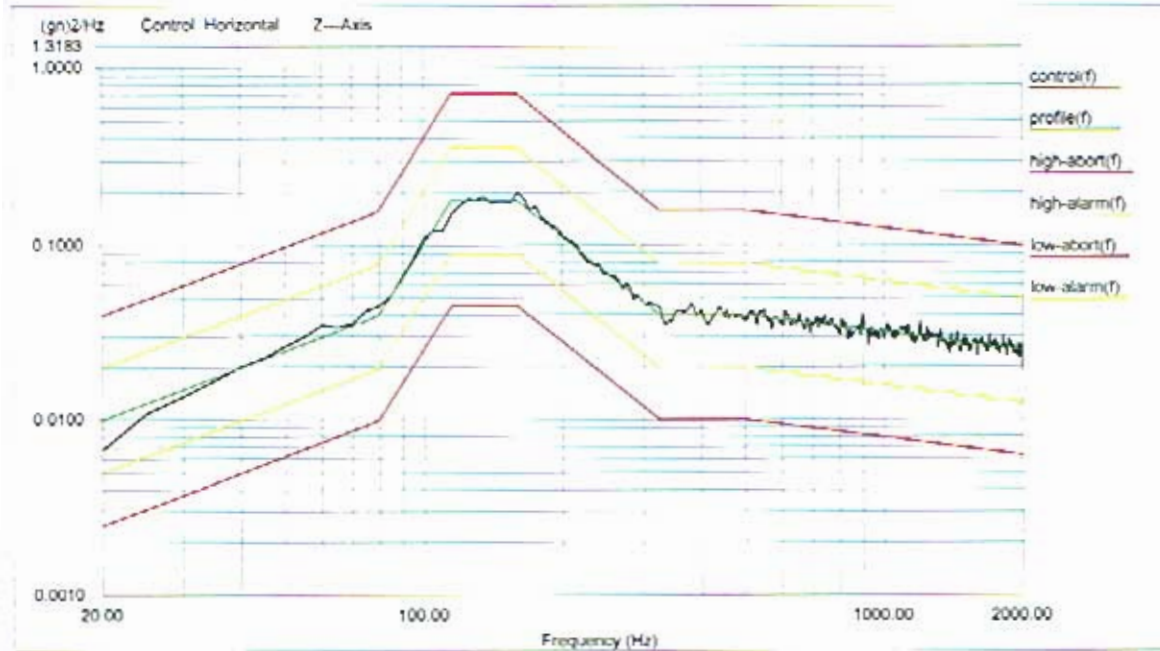
Level: 100 % Control Peak: 0.148830 gn Full Level Time: 00:04:19 Sweep Type: Logarithmic  
 Frequency: 1999.669067 Hz Demand Peak: 0.150000 gn Time Remaining: 00:00:00 Sweep Rate: 2 Oct/Min

Data saved at 10:22:43 AM, Tuesday, November 01, 2005 Report created at 10:22:44 AM, Tuesday, November 1, 2005



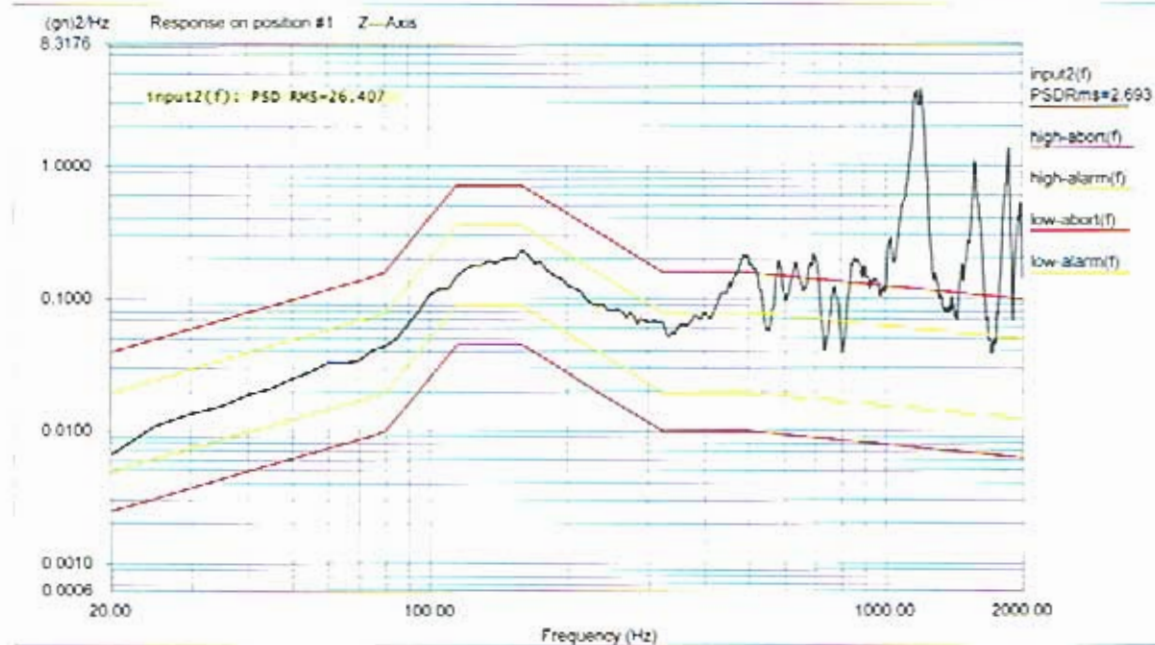
Level: 100 % Control Peak: 0.148830 gn Full Level Time: 00:04:19 Sweep Type: Logarithmic  
 Frequency: 1999.669067 Hz Demand Peak: 0.150000 gn Time Remaining: 00:00:00 Sweep Rate: 2 Oct/Min

Data saved at 10:22:43 AM, Tuesday, November 01, 2005 Report created at 10:22:44 AM, Tuesday, November 1, 2005



Level: 100 %  
Control RMS: 8.955717 gn Full Level Elapsed Time: 00:01:00 Lines: 400 Frame Time: 0.200000 Seconds  
Demand RMS: 8.915771 gn Remaining Time: 00:00:00 DOF: 154 dF: 5.000000 Hz

Data saved at 10:26:49 AM, Tuesday, November 01, 2005 Report created at 10:26:50 AM, Tuesday, November 1, 2005



Level: 100 %  
Control RMS: 8.955717 gn Full Level Elapsed Time: 00:01:00 Lines: 400 Frame Time: 0.200000 Seconds  
Demand RMS: 8.915771 gn Remaining Time: 00:00:00 DOF: 154 dF: 5.000000 Hz

Data saved at 10:26:49 AM, Tuesday, November 01, 2005 Report created at 10:26:50 AM, Tuesday, November 1, 2005



Level: 100 %

Control RMS: 8.955717 gn

Demand RMS: 8.915771 gn

Full Level Elapsed Time: 00:01:00

Remaining Time: 00:00:00

Lines: 400

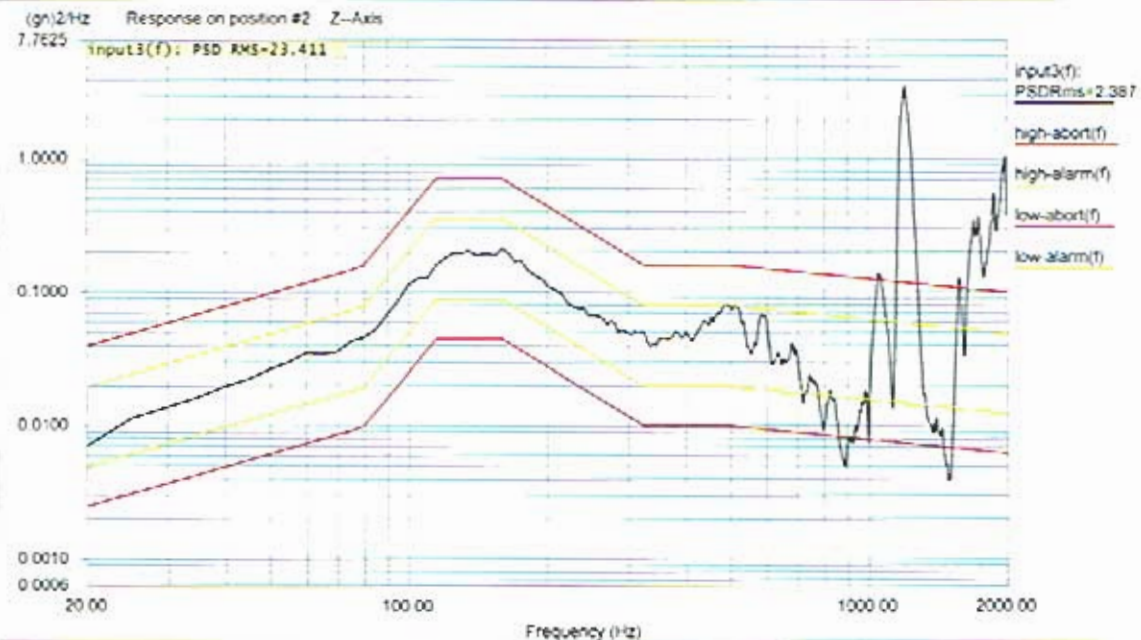
DOF: 154

Frame Time: 0.200000 Seconds

dF: 5.000000 Hz

Data saved at 10:26:49 AM, Tuesday, November 01, 2005

Report created at 10:26:50 AM, Tuesday, November 1, 2005



Level: 100 %

Control RMS: 8.955717 gn

Demand RMS: 8.915771 gn

Full Level Elapsed Time: 00:01:00

Remaining Time: 00:00:00

Lines: 400

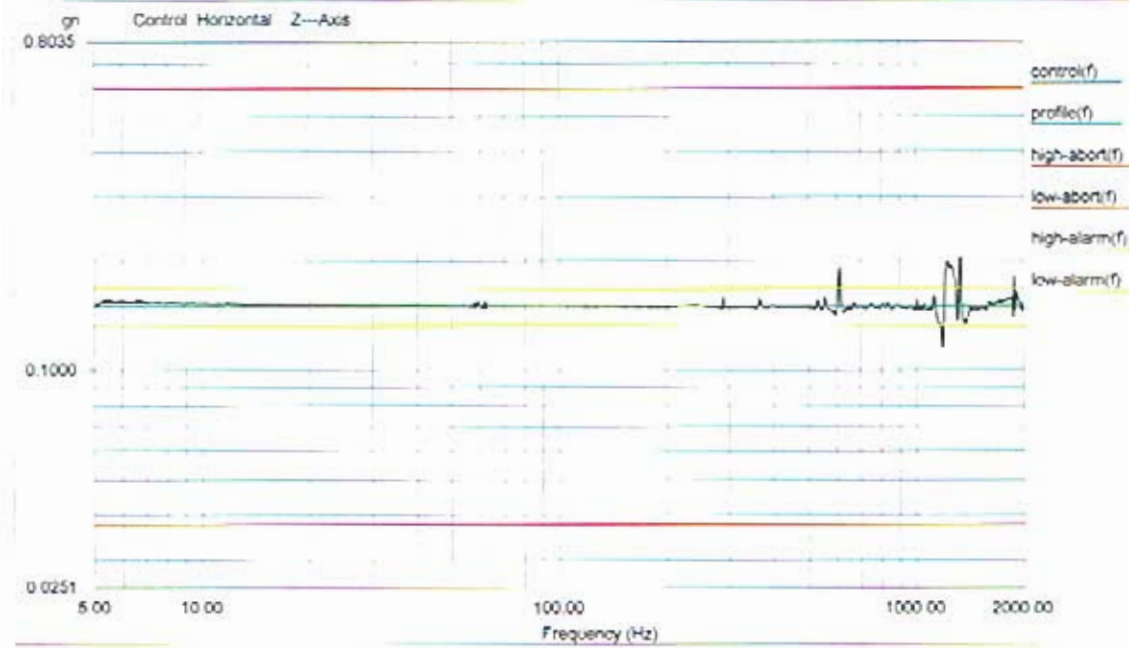
DOF: 154

Frame Time: 0.200000 Seconds

dF: 5.000000 Hz

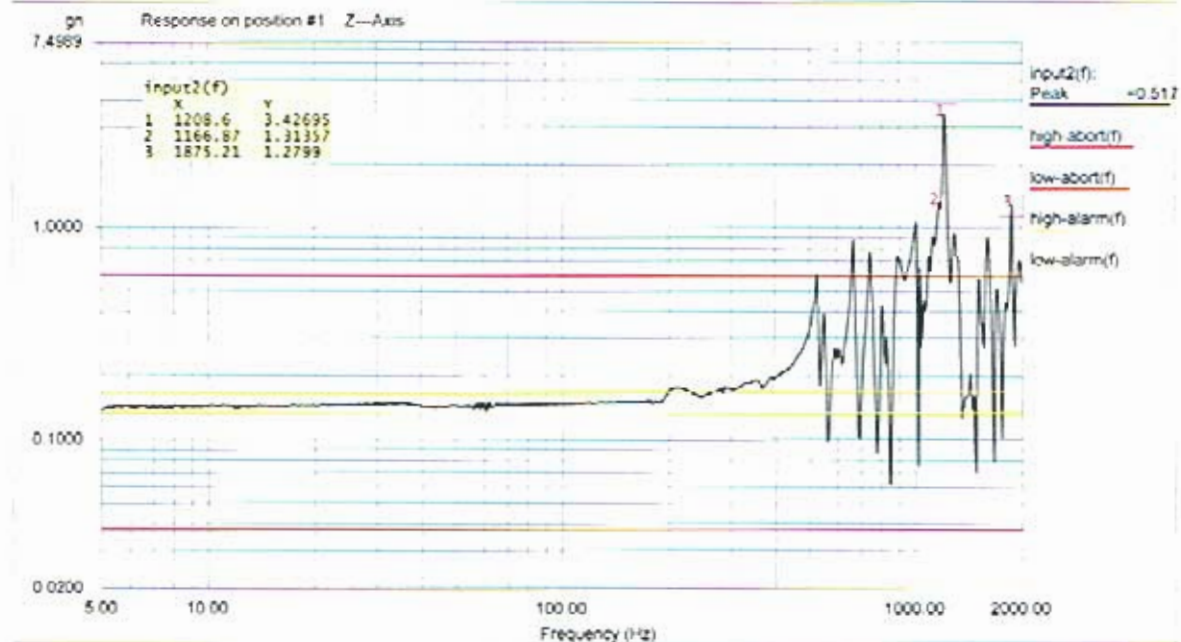
Data saved at 10:26:49 AM, Tuesday, November 01, 2005

Report created at 10:26:50 AM, Tuesday, November 1, 2005



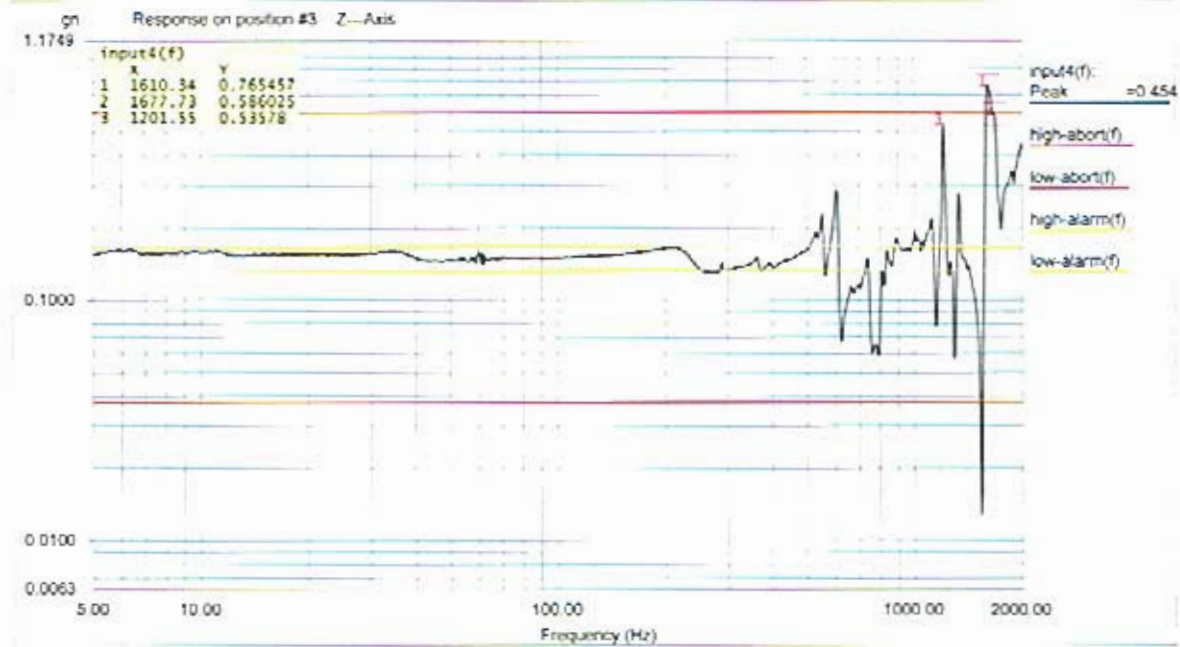
Level: 100 % Control Peak: 0.152645 gn Full Level Time: 00:04:19 Sweep Type: Logarithmic  
 Frequency: 1999.669067 Hz Demand Peak: 0.150000 gn Time Remaining: 00:00:00 Sweep Rate: 2 Oct/Min

Data saved at 10:34:06 AM, Tuesday, November 01, 2005 Report created at 10:34:08 AM, Tuesday, November 1, 2005



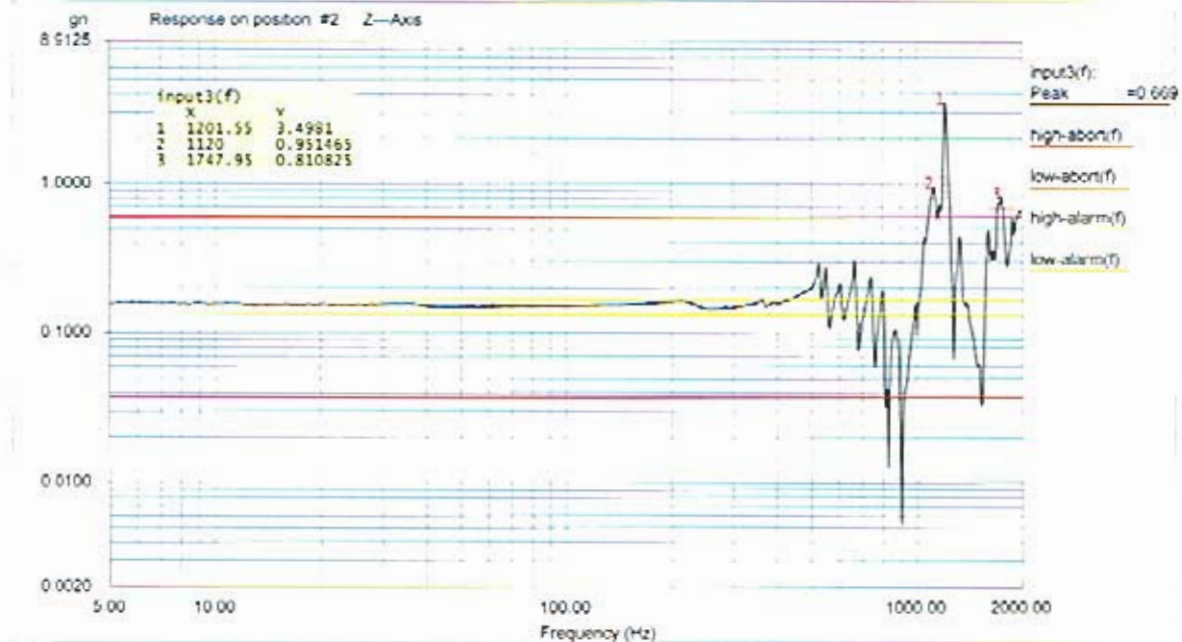
Level: 100 % Control Peak: 0.152645 gn Full Level Time: 00:04:19 Sweep Type: Logarithmic  
 Frequency: 1999.669067 Hz Demand Peak: 0.150000 gn Time Remaining: 00:00:00 Sweep Rate: 2 Oct/Min

Data saved at 10:34:06 AM, Tuesday, November 01, 2005 Report created at 10:34:08 AM, Tuesday, November 1, 2005



Level: 100% Control Peak: 0.152645 gn Full Level Time: 00:04:19 Sweep Type: Logarithmic  
 Frequency: 1999.669067 Hz Demand Peak: 0.150000 gn Time Remaining: 00:00:00 Sweep Rate: 2 Oct/Min

Data saved at 10:34:06 AM, Tuesday, November 01, 2005 Report created at 10:34:08 AM, Tuesday, November 1, 2005



Level: 100% Control Peak: 0.152645 gn Full Level Time: 00:04:19 Sweep Type: Logarithmic  
 Frequency: 1999.669067 Hz Demand Peak: 0.150000 gn Time Remaining: 00:00:00 Sweep Rate: 2 Oct/Min

Data saved at 10:34:06 AM, Tuesday, November 01, 2005 Report created at 10:34:08 AM, Tuesday, November 1, 2005