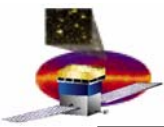


# GLAST Large Area Telescope: I&T K/O Scope of Meeting

**March 9th, 2004**

**Dick Horn  
SU-SLAC  
Deputy for Systems Engineering**

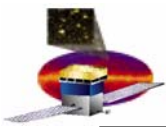
**dhorn@slac.stanford.edu  
650-926-8578**



# I & T Kick-Off Scope

---

- **Review and discuss the I&T roadmap to LAT Integration**
  - **Focus is readiness plan for initial integration through '04**
  - **Future reviews will focus on system & environmental tests**
    - Environmental Test K/O – June (TBD)
    - System Test K/O – Aug (TBD)
- **Minimum Goals**
  - **Be prepared to safely integrate and test the first tower by July 04**
  - **Be prepared to safely conduct a two tower comprehensive test in Sept '04**



# Integration K/O Meeting Agenda

---

<b>Scope of meeting</b>	<b>Dick Horn</b>	<b>9:30 – 9:45</b>
<b>Systems</b>	<b>Pat Hascall</b>	<b>9:45 – 10:15</b>
<b>Overview</b>	<b>Brian Grist</b>	<b>10:15 - 10:30</b>
<b>Integration plan &amp; Status</b>	<b>Larry Wai / Tom Borden</b>	<b>10:30 – 10:45</b>
<b>I&amp; T Procedures</b>	<b>Larry Wai / Tom Borden</b>	<b>10:45 – 11:15</b>
<b>MGSE Requirements &amp; status</b>	<b>Eric Gawehn</b>	<b>11:15 – 11:45</b>
<b>EGSE Hardware</b>	<b>Ric Claus</b>	<b>11:45 – noon</b>
<b>I&amp;T Software, scripts &amp; databases</b>	<b>Ric Claus</b>	<b>noon – 12:15</b>
<b>Break for (working) Lunch</b>		<b>12:15 – 12:45</b>

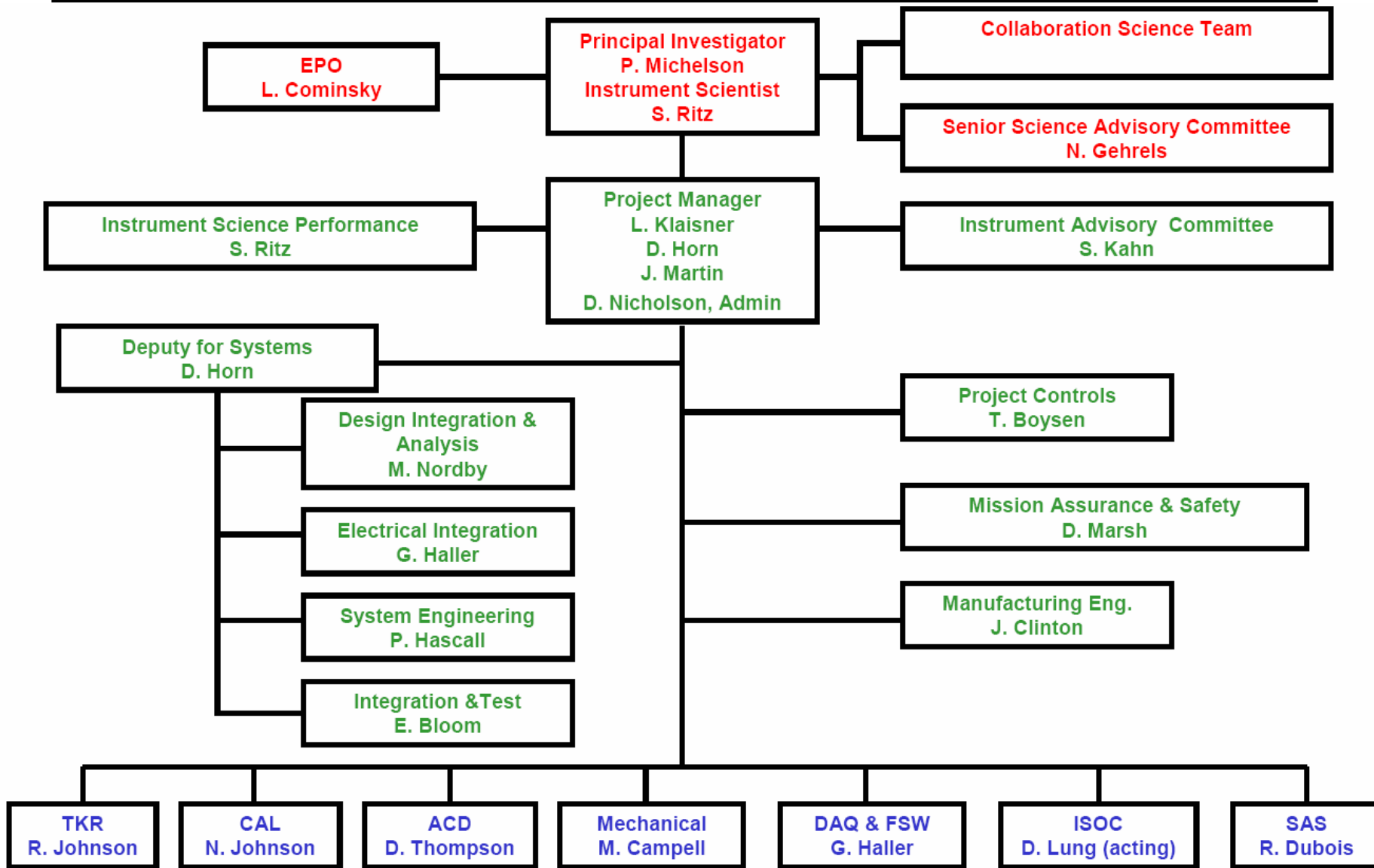


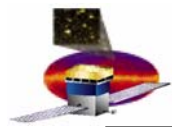
# Integration K/O Meeting Agenda (cont)

---

<b>SVAC</b>	<b>Eduardo do Couto e Silva</b>	<b>12:45 – 1:00</b>
<b>Particle Test readiness</b>	<b>Gary Godfrey</b>	<b>1:00 – 1:15</b>
<b>Facilities readiness</b>	<b>Larry Wai / Tom Borden</b>	<b>1:15 – 1:30.</b>
<b>Training &amp; Technician Cert.</b>	<b>Larry Wai / Tom Borden</b>	<b>1:30 – 1:45</b>
<b>I&amp;T Operations Management</b>	<b>Elliott Bloom</b>	<b>1:45 – 2:00</b>
<b>Summary</b>	<b>Elliott Bloom</b>	<b>2:00 – 2:15</b>
<b>Action Items</b>	<b>Horn</b>	<b>2:15 – 2:30</b>

# LAT Org Chart





# Going In Concerns/Desired Outcomes

---

- **Concerns**
  - **Requirements**
    - LAT development priorities has impacted System Engineering development/coordination of detailed test requirements
    - Design Integration (Mechanical & Electrical) assembly details immature
  - **Subsystem Support**
    - Subsystem workload is causing late transfer of detailed/verified test info (scripts, etc) to I&T
    - Electronics delivery of EGSE is later than expected
  - **Availability of EM's for early integration development**
    - Subsystem development has reduced availability of EM for pre-I&T procedure development
- **Desired Outcomes of Kickoff**
  - **Define key driver's/issues to be resolved for I&T success**
  - **Common understanding of minimum state of readiness to start I&T**
  - **Common understanding of minimum state of readiness to start two tower tests**
  - **Actions identified and understanding of LAT priorities to support objectives**

# LAT Schedule

