

GLAST Large Area Telescope:

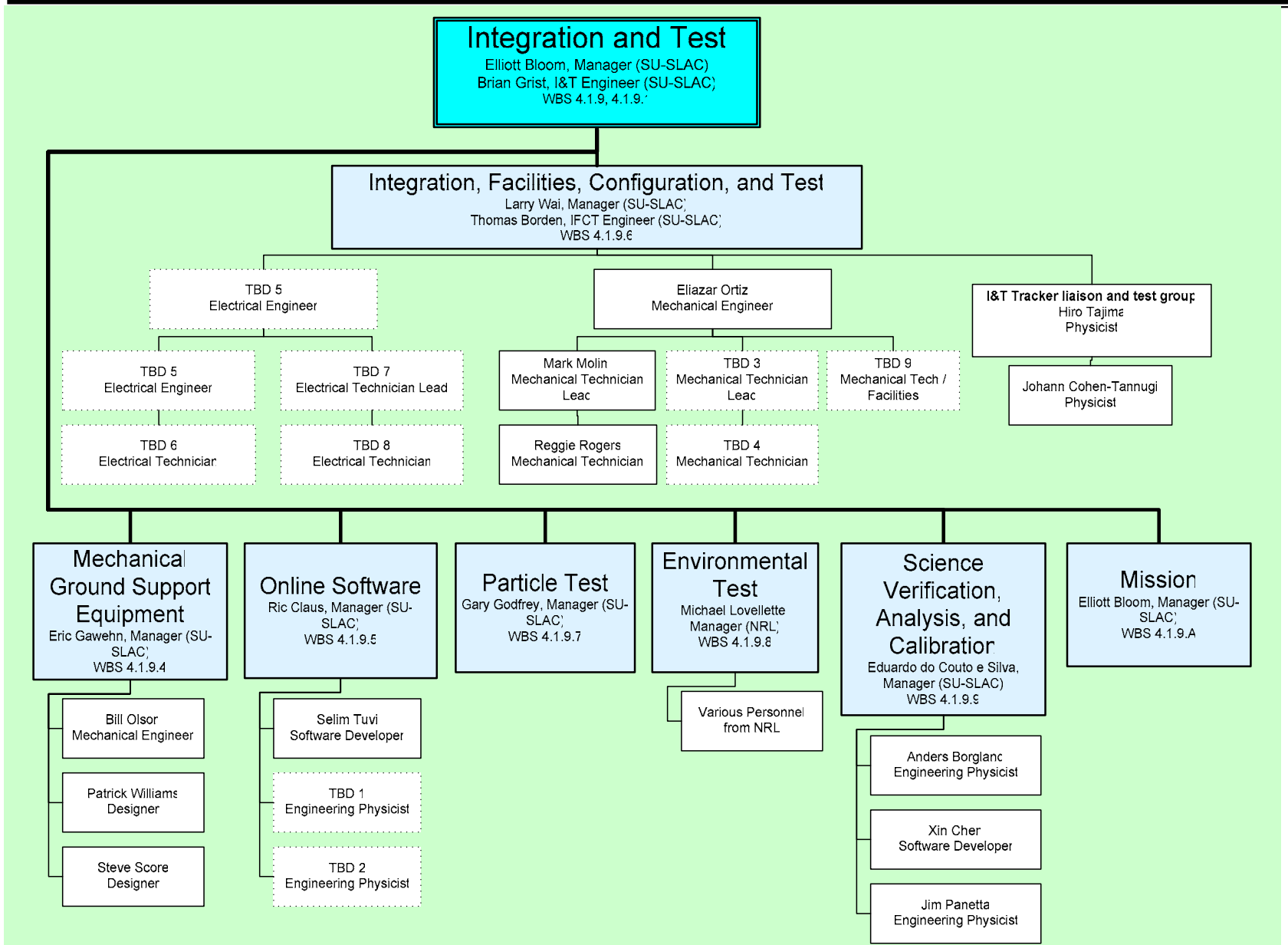
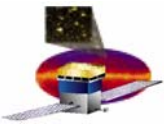
I&T Integration Kickoff Meeting Overview

March 9th, 2004

**Brian Grist
SU-SLAC
Subsystem Engineer**

**bgrist@slac.stanford.edu
650-926-2998**

I&T Organization

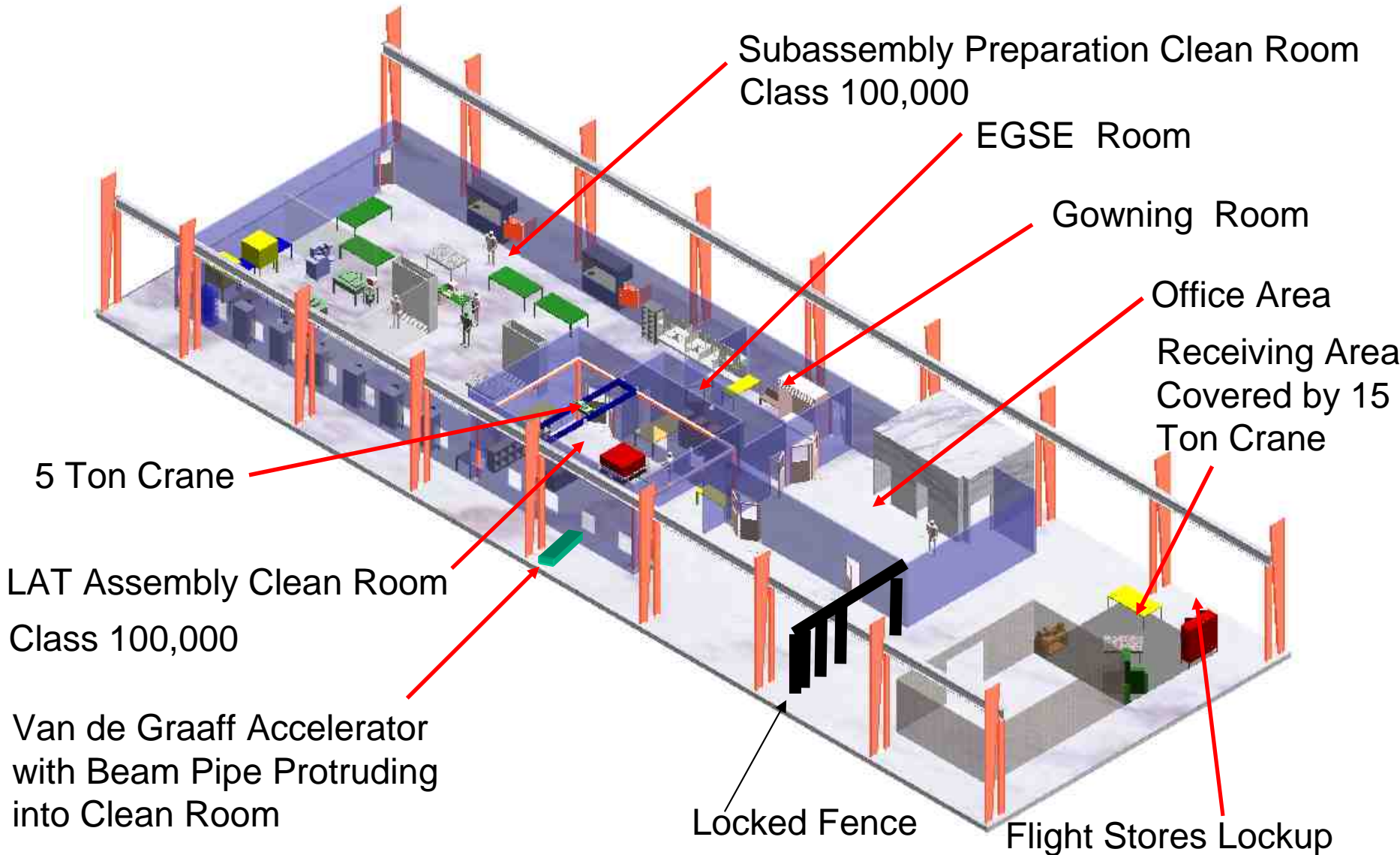


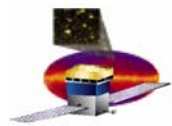


I&T Department Responsibilities for Integration

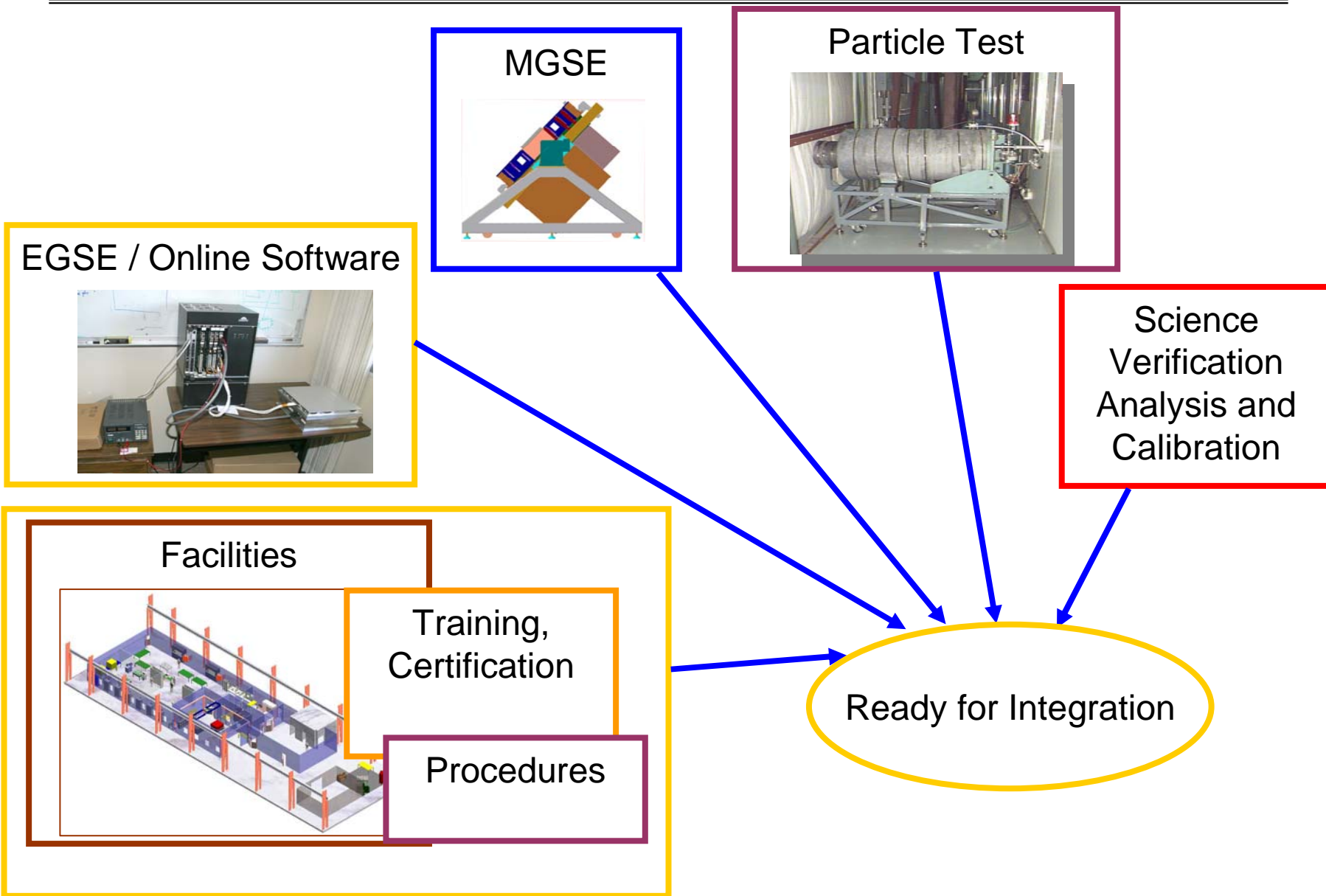
- **IFCT (Integration, Facilities, Configuration, and Test)**
 - Develop I&T plans, procedures. Layout, spec, and procure equipment and facilities needed for LAT integration at SLAC. Train and certify technician support for LAT flight hardware handling. Provide ongoing operational support of integration facilities and staff. Configuration control of all flight hardware. Setup and configuration of EGSE and MGSE. Supervise and perform I&T work in Building 33 (Integration Facility).
- **MGSE (Mechanical Ground Support Equipment)**
 - Supports the other I&T departments in their MGSE needs. This includes development, fabrication or procurement, assembly and qualification testing of all needed MGSE. It also includes support during use of the equipment.
- **Online**
 - Develop, test, and support software used to collect data LAT on test stands, stores data, and to monitor and control the test stand and data acquisition system. (Substantial hardware comes from the Electronics Subsystem). EGSE qualification and Verification. Configuration control of all I&T scripts used on Flight hardware.
- **Particle Test**
 - Develop, plan, and lead in the implementation of particle tests. Particle tests will include ground cosmic rays and Van de Graff photons. These tasks will require close coordination with all other departments in I&T.
- **SVAC (Science Verification, Analysis, and Calibration)**
 - Coordinate and help perform the data analysis for particle beam and cosmic ray tests. These tests are designed to ultimately calibrate the LAT, and to validate the LAT science performance requirements. SVAC acquires its information/data from low-level calibration tests on hardware units by the subsystems, from particle tests using EM, from particle tests on Flight units in the process of I&T, and finally from the full LAT.

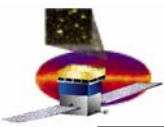
GLAST Integration Area – Building 33 SLAC





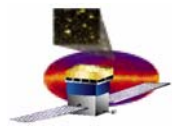
Preparation for Integration in I&T





6 month milestone summary

- **Verify Van de Graaff high rate capability** 03/19/04
- **Training Mockup complete** 03/31/04
- **Facility preparation (firewall, purge lines) complete** 03/31/04
- **EM-2 complete** 04/30/04
- **Test bed training, EGSE qualification & verification begins** 05/01/04
- **ACD Test Area Tent in building 33** 05/31/04
- **4x4 lift fixture complete** 06/04/04
- **Single Bay I&T procedures complete** 06/18/04
- **Multi Bay I&T procedures complete** 06/18/04
- **LAT Rotation Stand assy, proof test complete** 07/08/04
- **IRR** 07/08/04



Major Project Milestones

