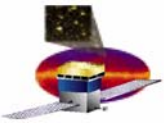


GLAST Large Area Telescope:

**Integration and Test
Phase 0 IRR/TRR
November 3-4, 2005**

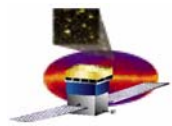
Introduction

**Ken Fouts
kfouts@slac.stanford.edu**

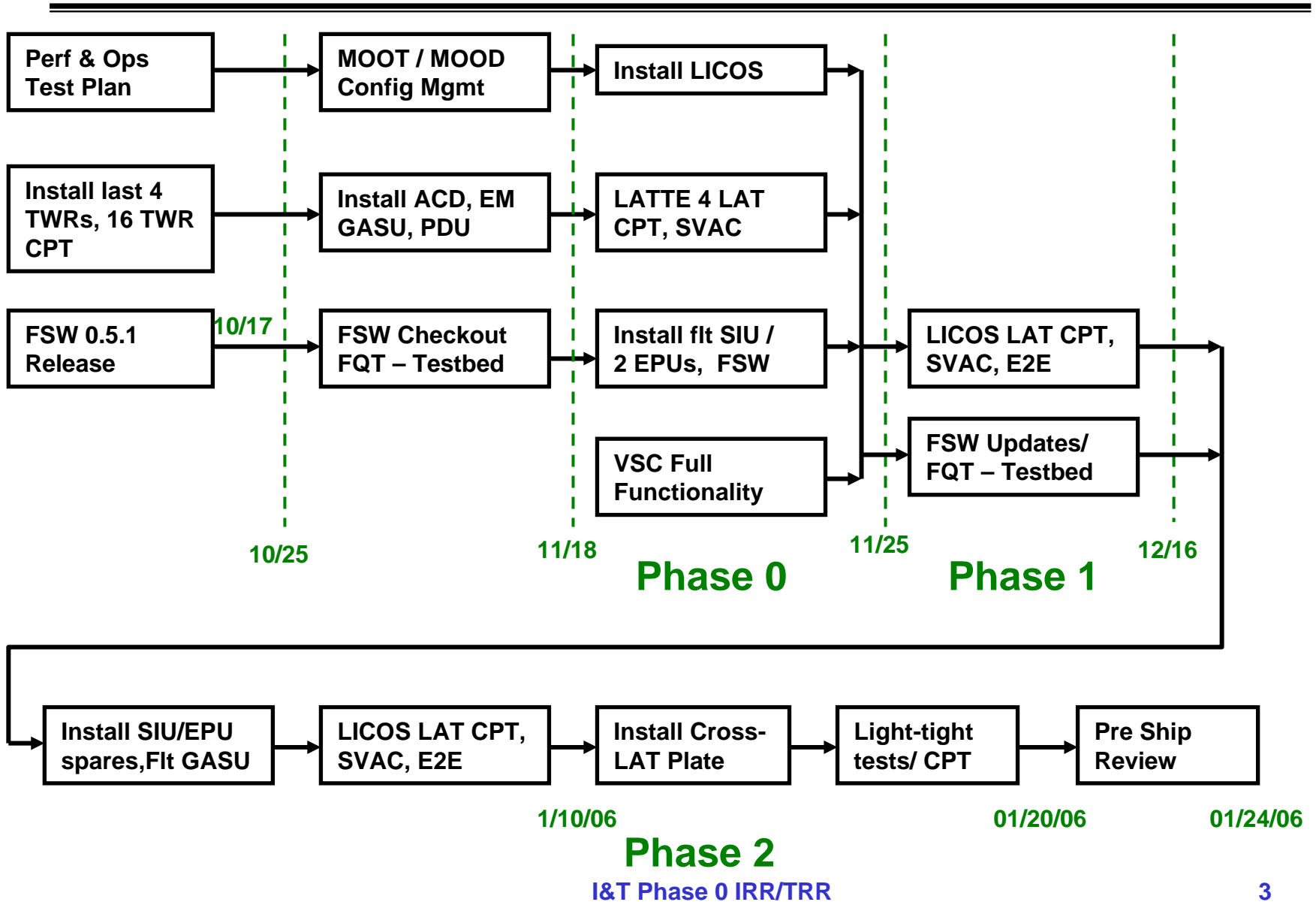


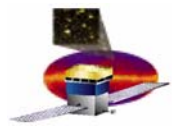
Steps to Ship to NRL

- **Phase 0 – Hardware check out**
 - **Hardware**
 - ACD
 - FLT PDU, EM GASU, FLT Cables, EMI Skirt, no SIU/EPU
 - **Software**
 - LATTE 4
 - **Exit**
 - Successful LATTE 4 CPT
- **Phase 1 – Software check out**
 - **Hardware**
 - FLT PDU, EM GASU, 1 Flt SIU, 2 Flt EPU, VSC, Control/Pwr Racks
 - **Software**
 - FSW, VSC, LICOS, Configuration Database
 - **Exit**
 - Successful LICOS CPT
- **Phase 2 – Run for the record**
 - **Hardware**
 - Full complement of flight hardware, X-LAT plate
 - **Software**
 - Flight release of FSW, VSC, LICOS, Configuration Database
 - **Exit**
 - Successful LICOS CPT, SVAC, E2E, Verification w/SIIS

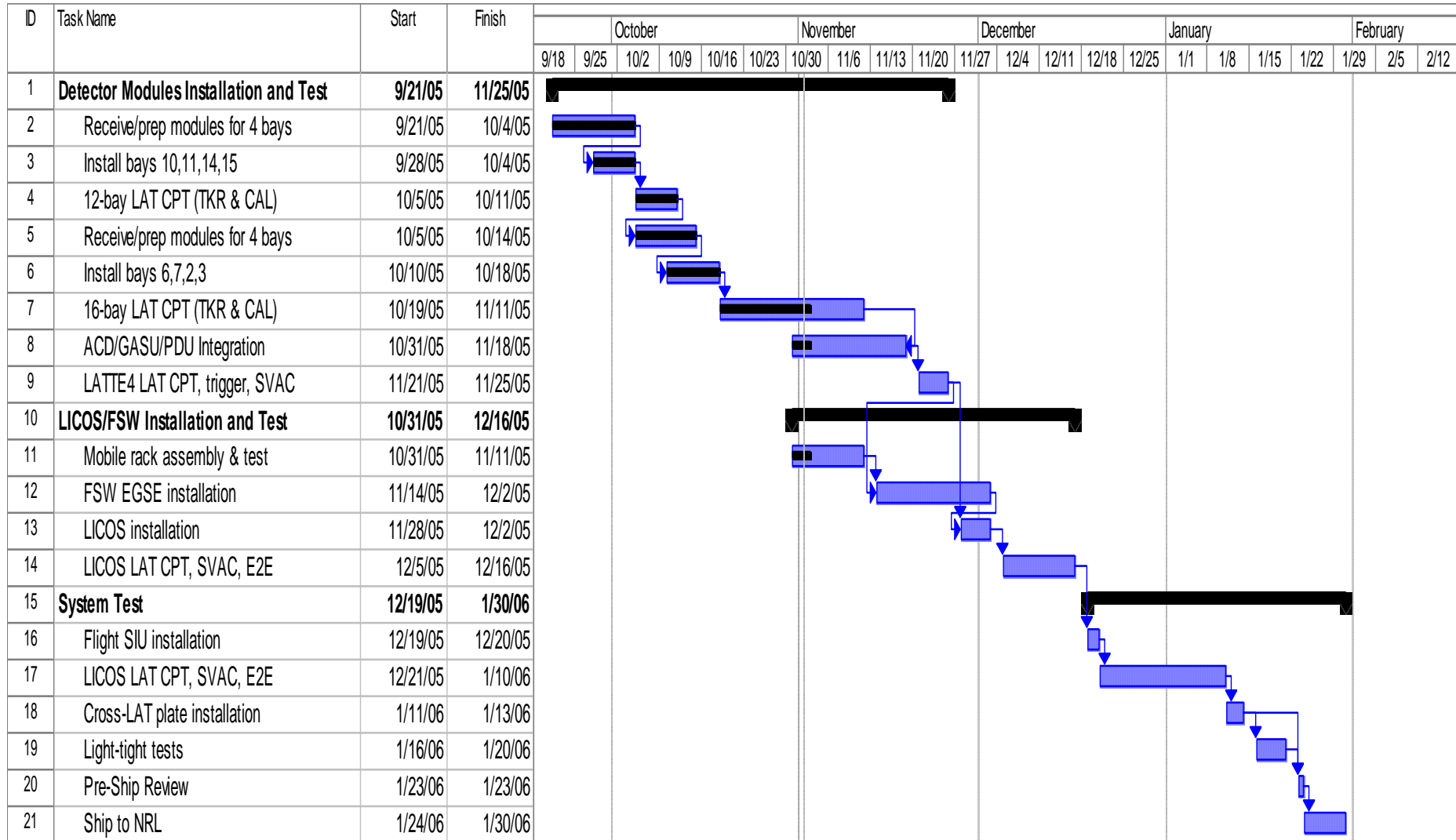


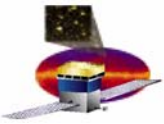
System Test Flow





LAT I&T Schedule

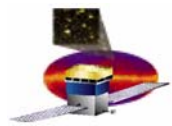




IRR/TRR Goals

Goals for this review:

- Review and assess the mechanical and electrical readiness for Phase 0.
- Discuss plans for Phase 1 and 2.
- Identify additional reviews.



I&T Organization

