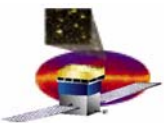


# GLAST Large Area Telescope:

**Integration and Test  
Phase 0 IRR/TRR  
November 3-4, 2005**

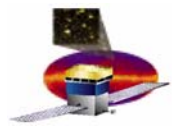
## **Introduction**

**Ken Fouts  
kfouts@slac.stanford.edu**

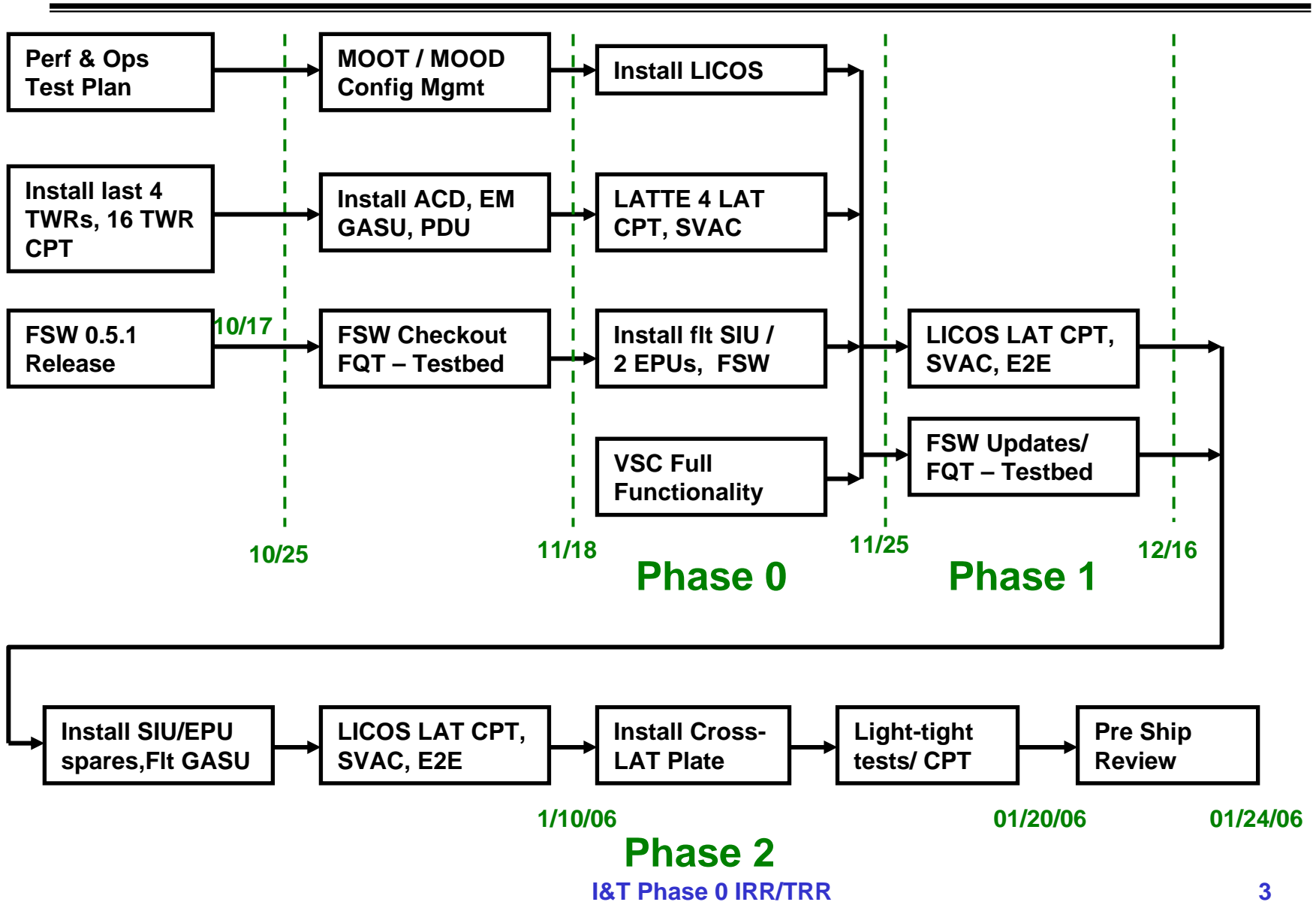


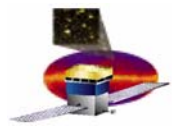
# Steps to Ship to NRL

- **Phase 0 – Hardware check out**
  - **Hardware**
    - ACD
    - FLT PDU, EM GASU, FLT Cables, EMI Skirt, no SIU/EPU
  - **Software**
    - LATTE 4
  - **Exit**
    - Successful LATTE 4 CPT
- **Phase 1 – Software check out**
  - **Hardware**
    - FLT PDU, EM GASU, 1 Flt SIU, 2 Flt EPU, VSC, Control/Pwr Racks
  - **Software**
    - FSW, VSC, LICOS, Configuration Database
  - **Exit**
    - Successful LICOS CPT
- **Phase 2 – Run for the record**
  - **Hardware**
    - Full complement of flight hardware, X-LAT plate
  - **Software**
    - Flight release of FSW, VSC, LICOS, Configuration Database
  - **Exit**
    - Successful LICOS CPT, SVAC, E2E, Verification w/SIIS

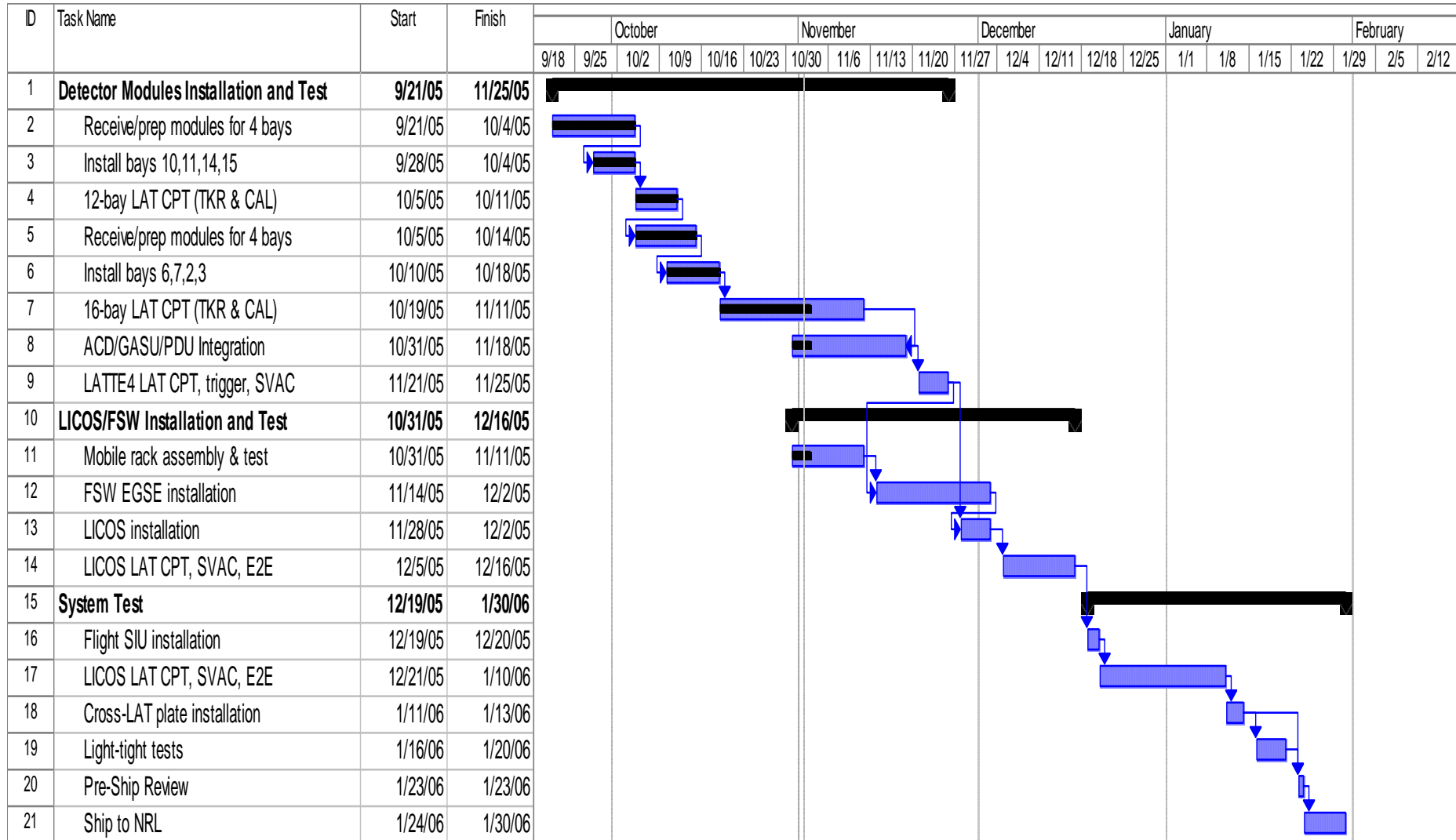


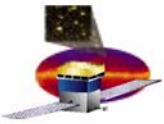
# System Test Flow





# LAT I&T Schedule



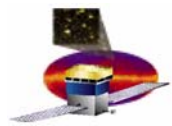


# IRR/TRR Goals

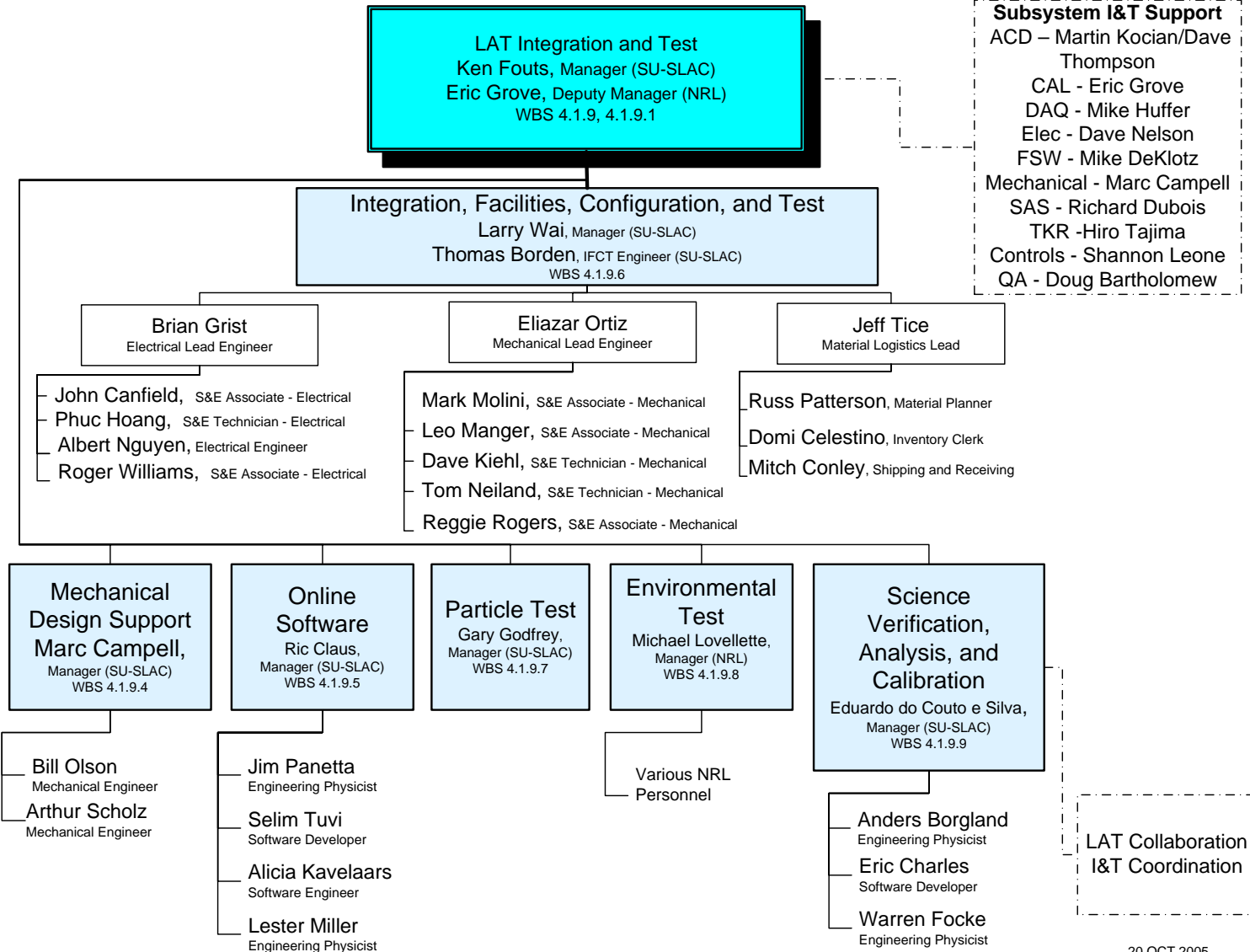
---

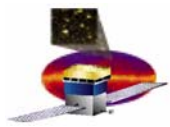
## Goals for this review:

- Review and assess the mechanical and electrical readiness for Phase 0.
- Discuss plans for Phase 1 and 2.
- Identify additional reviews.



# I&T Organization





# Test Readiness Review Plan

---

- Electrical Test Readiness Review will cover:
  - Current Test Status
    - What has been completed
    - What is the plan
  - EGSE Hardware Configuration
  - Current Flight Hardware Configuration Under Test
  - Online Status
    - LATTE Test Executive
    - 16 Tower Test Scripts
    - **BONUS** LICOS Status (a glimpse into Phase 1)