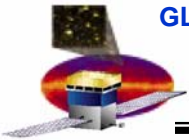


**LAT Solid Model Control Overview**  
**LAT Engineering Meeting**  
**June 29, 2004**

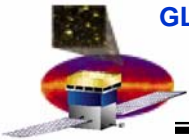
Rob Black [rpblack@slac.stanford.edu](mailto:rpblack@slac.stanford.edu)



## Agenda

---

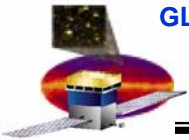
- **Agenda**
  - **Goals**
  - **Overview of file structure**
  - **LAT Level Drawing Tree**
  - **Overview of file management**
  - **Design Engineering Organization Chart**
  - **Summary/Open Issues**



## Goals

---

- **Goals**
  - **Provide a consistent method of solid model naming and control.**
  - **Minimize confusion as to which is the correct model to use.**
  - **Conform as much as possible to current SLAC methodology**
    - **Allows SLAC Solid Edge users to be productive faster**
    - **Simplifies ability of users other than the creator to make updates**
  - **Provide a clear method of identifying the latest version of a model**
  - **Provide a methodology for CAD model Configuration Control**



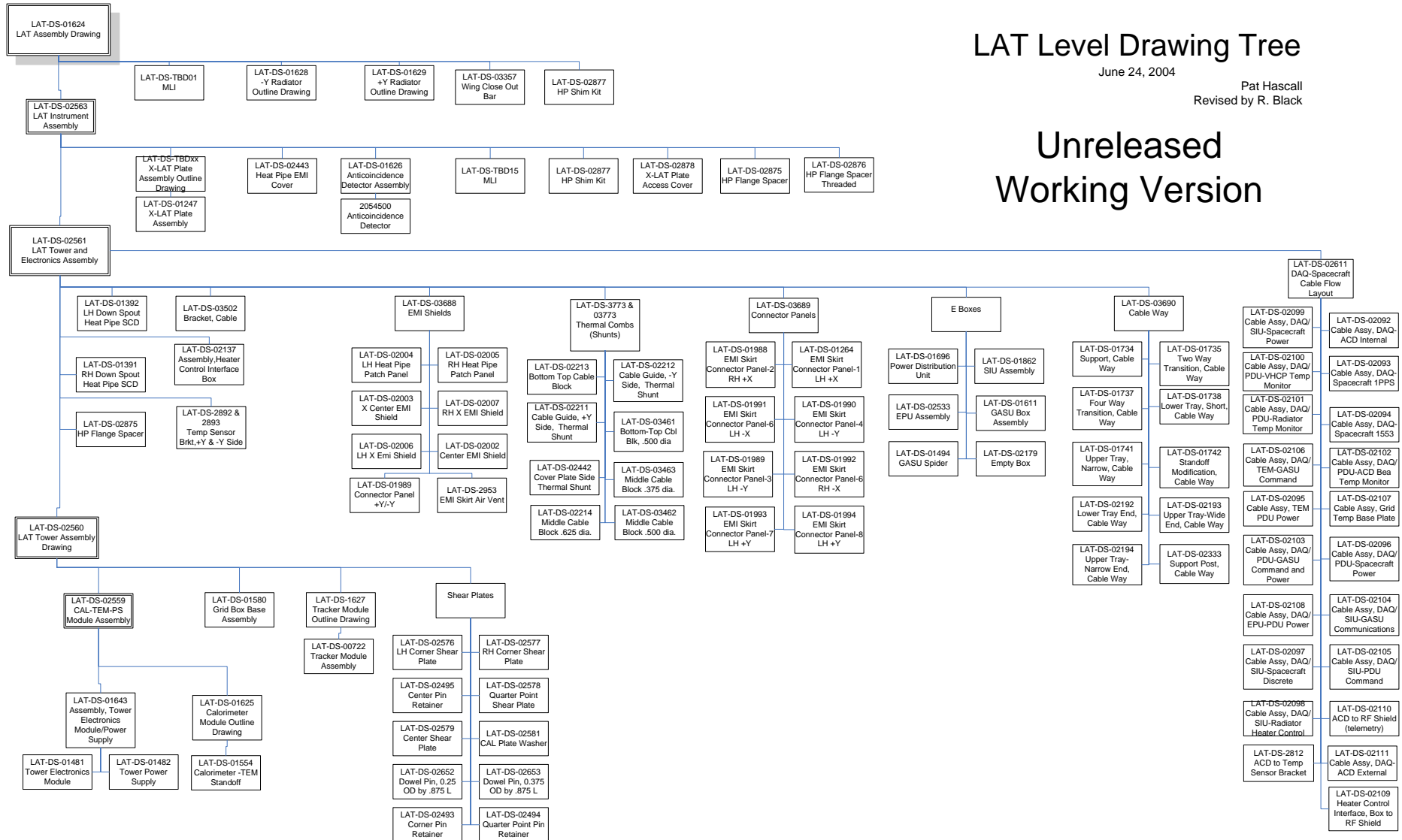
# LAT Level Drawing Tree

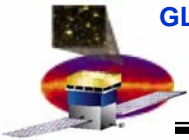
## LAT Level Drawing Tree

June 24, 2004

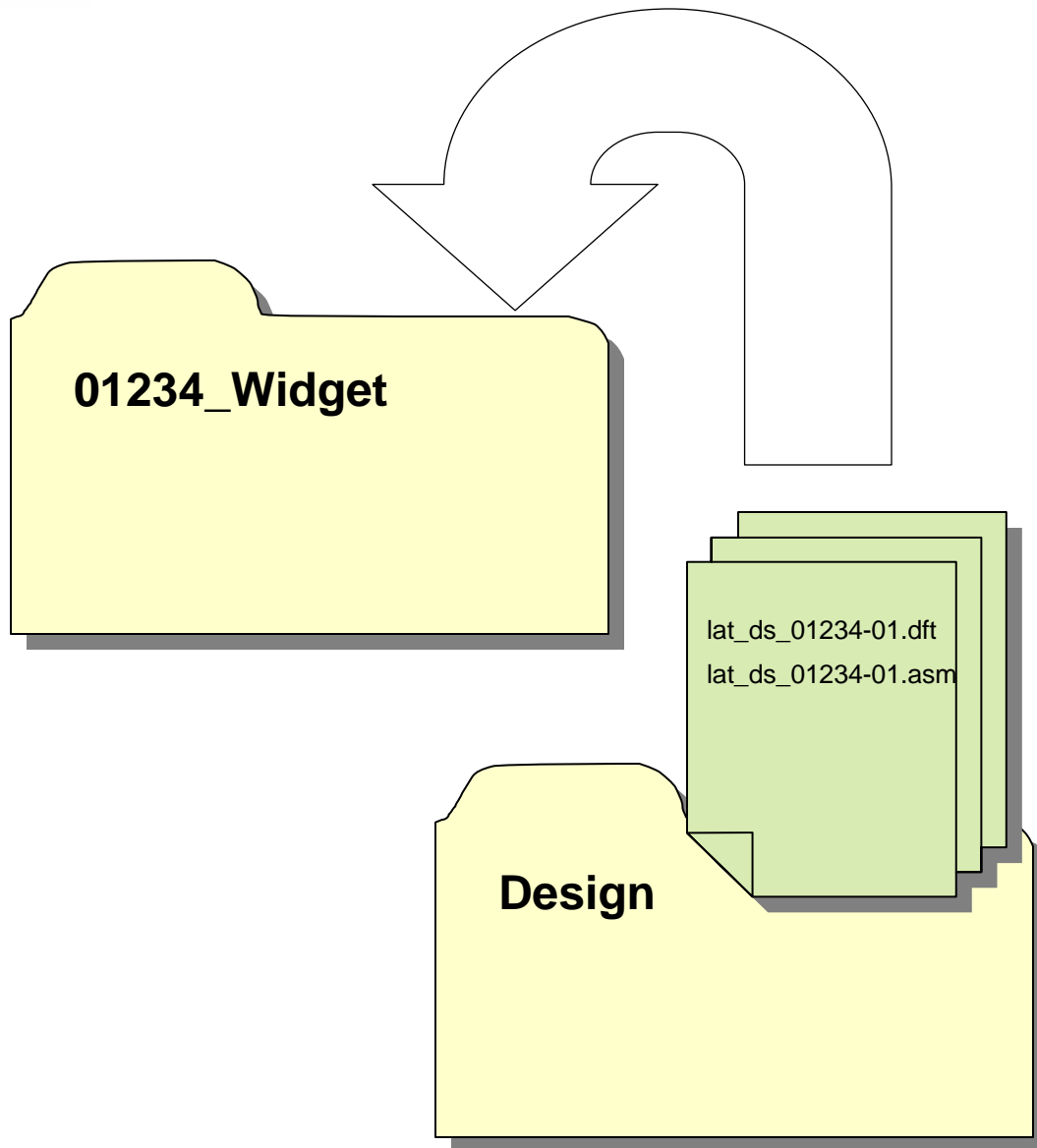
Pat Hascall  
Revised by R. Black

# Unreleased Working Version

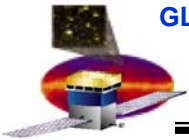




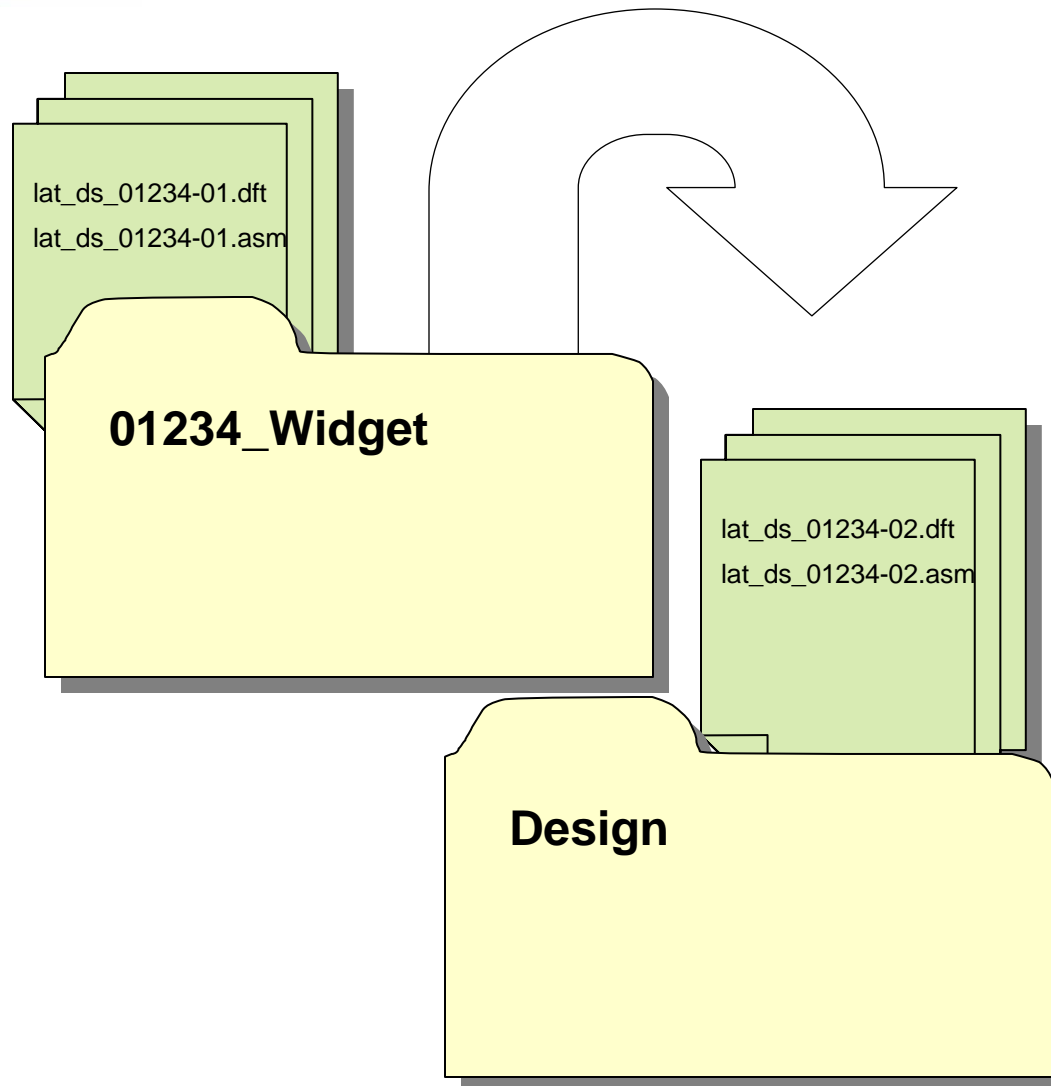
## Initial Model Release Flow



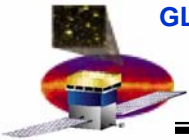
- As drawings are released the draft file and its associated files are moved up and into the released folder.
- The released folder will contain the current revision as well as all previous revisions



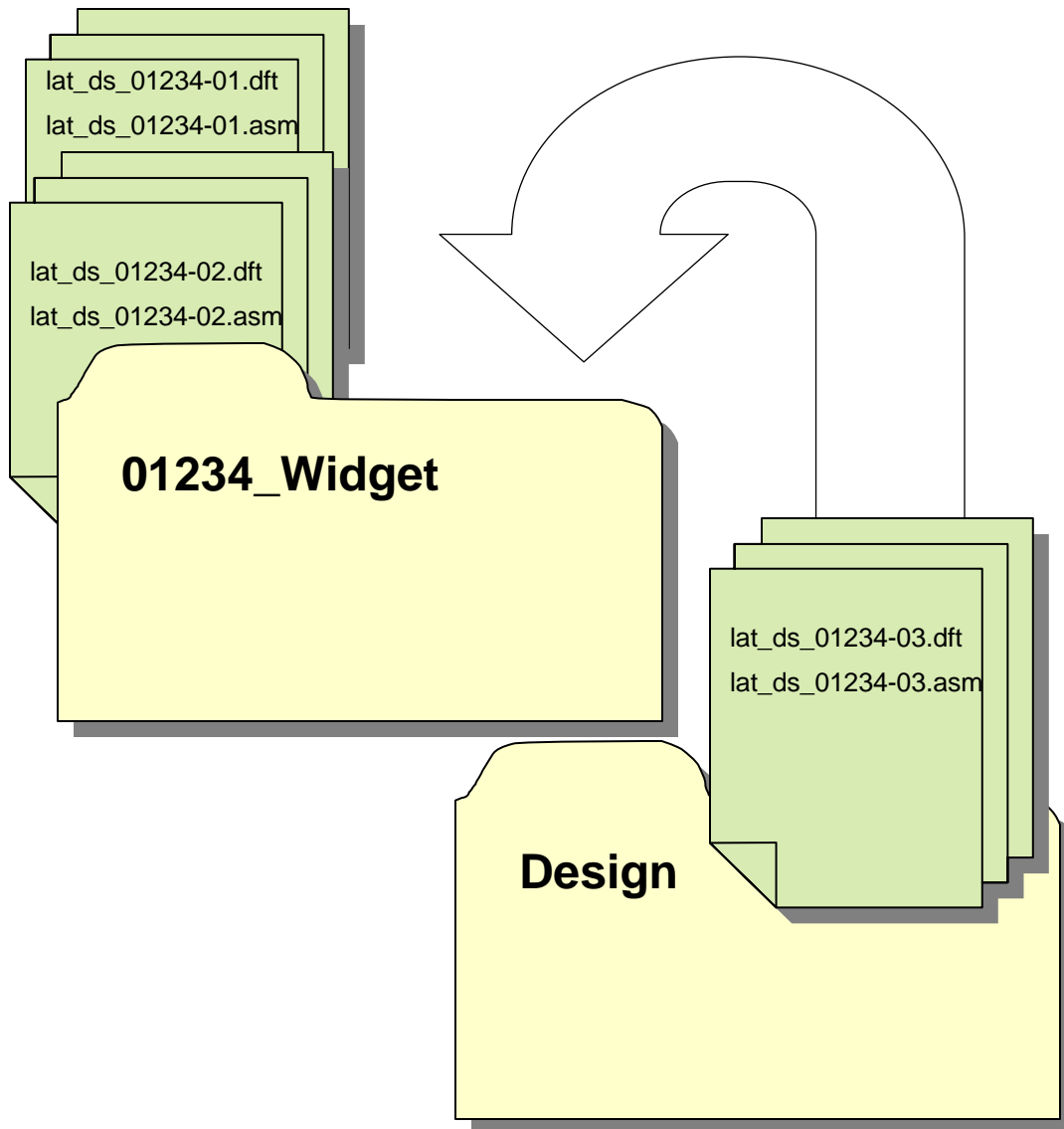
## Working Model Flow



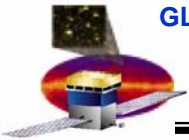
- As design changes are required the current released versions of the files will be copied down to the design folder.
- The working model in the design folder will be named at one revision number higher than the latest revision.
- Trades studies and other reference files should be kept in the design folder.



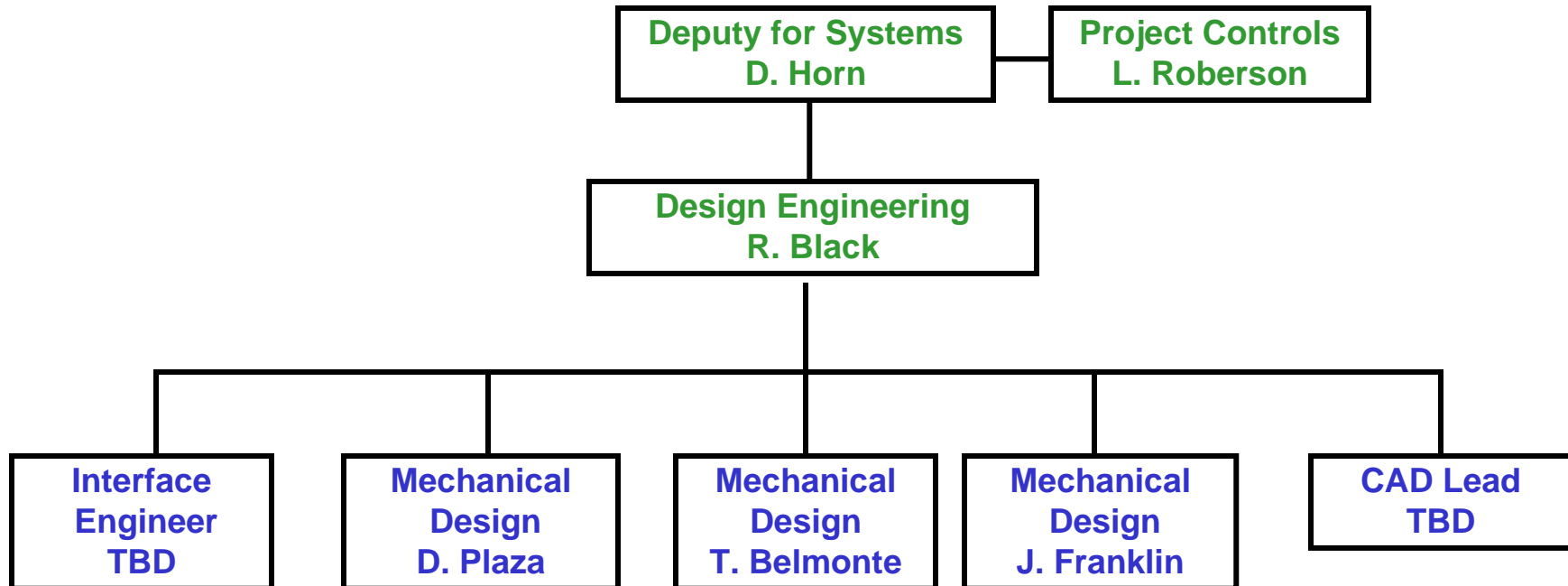
## Revised Model Flow



- As the next revision drawings are released the updated draft file and its associated files are moved up and into the released folder.
- The released folder will contain the current revision as well as all previous revisions.
- Trade Study models should be deleted or archived after the changes they were used for are released.



# Design Engineering



Roles

IDD and ICD  
interfaces and  
documentation  
Outline Drawings  
SCDs

Roles

Grid  
Grid Box Assy.  
EMI Skirt  
Cable Ways  
Connector Panels

Roles

Thermal Combs  
Installation Assy.  
Tracker Installation

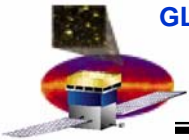
Roles

Simplified Tracker  
CAL-TEM-PS Assy.

Roles

CAD model  
Administration  
Release  
Coordination  
Configuration  
Control  
Documentation  
Maintenance





## Issues and Actions

---

### Issues:

Currently no folders exist for GSE

### Actions required:

Subsystem managers need to provide a list of CAD users and directories they need access to.

- **Unassigned Roles**
  - **MLI Blanket Design Support**
  - **MLI Blanket Installation Documentation**
  - **Instrumentation Installation Documentation**
    - **Thermisters**
    - **Thermocouples**
    - **Accelerometers**
  
- **Models need to be migrated over to the V: drive**
  - **Electronics plans to move them over as they are released**
  - **Transition plans for other subsystems need to be established**