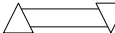



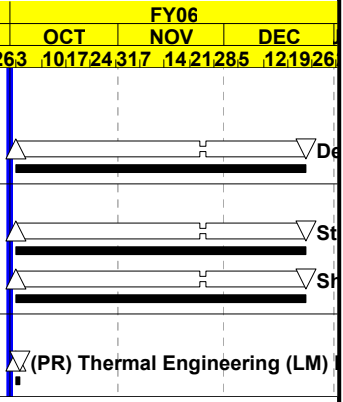


Activity ID	Activity Description	Orig Dur	% Comp	Early Start	Early Finish	Total Float	FY05		FY06															
							SEP	OCT	NOV	DEC														
<b>4 GLAST INSTRUMENTS</b>							95	12	19	26	3	10	17	24	31	7	14	21	28	5	12	19	26	
<b>4.1 GLAST LAT PROJECT</b>																								
<b>4.1.1 INSTRUMENT MANAGEMENT</b>																								
<b>4.1.1.1 PROJECT MANAGEMENT</b>																								
1M1TR1150	Start LAT Integration & Test	1	0	03OCT05	03OCT05	565																		Start LAT Integration & Test
1M1000830	Start of FY 2006	0	0	03OCT05*		0																		Start of FY 2006
1M1000890	Start of FY 2006	0	0	03OCT05*		0																		Start of FY 2006
1M1000291	Flight Tracker Tower 12 RFI	0	0		05OCT05	17																		Flight Tracker Tower 12 RFI
1M7942000	Flight PDU Box-Elec to I&T	0	0		06OCT05	57																		Flight PDU Box-Elec to I&T
1M7R050	LCB Flight Units - Elec to Elec	0	0		06OCT05	10																		LCB Flight Units - Elec to Elec
1M1000300	Flight Tracker Tower 13 RFI	0	0		07OCT05	16																		Flight Tracker Tower 13 RFI
1M1000301	Flight Tracker Tower 14 RFI	0	0		07OCT05	16																		Flight Tracker Tower 14 RFI
1M1000271	Flight Tracker Tower 8 RFI	0	0		11OCT05	14																		Flight Tracker Tower 8 RFI
1M1000310	Flight Tracker Tower 15 RFI	0	0		14OCT05	471																		Flight Tracker Tower 15 RFI
1M7941110	Flight Harness-Elec to I&T	0	0		14OCT05	28																		Flight Harness-Elec to I&T
1M79530	Release FSW for FQT	0	0		17OCT05	555																		Release FSW for FQT
1M99040	Start 16 Tower Comprehensive Performance Test	0	0		17OCT05	50																		Start 16 Tower Comprehensive
1M79540	FQT Scripts Complete	0	0		24OCT05	550																		FQT Scripts Complete
1M79560	FQT Complete	0	0		31OCT05	545																		FQT Complete
1M1000311	Flight Tracker Tower 16 RFI	0	0		02NOV05	458																		Flight Tracker Tower
1M7941090	Flight Event Processor Units-Elec to I&T	0	0		02NOV05	38																		Flight Event Process
1M7R040	1st Flight EPU/SIU-Elec to I&T	0	0		02NOV05	37																		1st Flight EPU/SIU-E
1M1000114	Flight Operations Review (L-9 mo.)	0	0		14NOV05	161																		Flight Operation
1M7R010	2nd Flight EPU/SIU-Elec to I&T	0	0		14NOV05	29																		2nd Flight EPU/S
1M7941070	Flight GASU Box-Elec to I&T	0	0		22NOV05	23																		Flight GASU Box-Elec to I&T
1M7R020	3rd Flight EPU/SIU-Elec to I&T	0	0		23NOV05	22																		3rd Flight EPU/SIU-Elec to I&T
1M7941440	Final EGSE incl S/C Sim, FSW-Elec to I&T	0	0		01DEC05	22																		Final EGSE
1M79610	FSW RFI to I&T	0	0		01DEC05	524																		FSW RFI to I&T
1MFSWFQT10	FSW FQT - Elec to I&T	0	0		01DEC05	19																		FSW FQT - Elec to I&T
1M7R030	4th Flight EPU/SIU-Elec to I&T	0	0		06DEC05	15																		4th Flight EPU/SIU-Elec to I&T
1M79620	Delta Test Readiness Review	0	0		09DEC05	518																		Delta Test Readiness Review
1M7941080	5th Flight EPU/SIU-Elec to I&T	0	0		20DEC05	11																		5th Flight EPU/SIU-Elec to I&T
<b>4.1.1.4 SCIENCE PREPARATION</b>																								
1M6MFC0080	CAL Prog Mgmt Computer Support and M & S	57	0	03OCT05	22DEC05	382																		CA
1M5C1519	Instrument Functional Testing - SLAC (FY06)	58	0	03OCT05	23DEC05	49																		Inst
1M80008500	ACD LAT Integration & Test Support	58	0	03OCT05*	23DEC05	508																		Ac

<b>OBS:</b> DG = GSFC DH = HEPL DL = SLAC DN = NRL DS = SSU © Primavera Systems, Inc.	<b>DT = Texas A&amp;M</b> <b>DU = UCSC</b> <b>DW = UW</b> <b>FF = French</b> <b>FI = Italy</b> <b>FJ = Japan</b> <b>FK = Sweden</b>	<b>PMT</b> Performance Measurement Technique  <b>A = Level of Effort</b> <b>E = 50-50</b>	 Early Bar  Baseline  Progress Bar  Critical Activity	<b>A2: Monthly WEB Schedule</b> A2 EF GT Jan 31, 2005 21OCT05 13:28
---	---	---	--	---

Activity ID	Activity Description	Orig Dur	% Comp	Early Start	Early Finish	Total Float	FY05				FY06							
							SEP	OCT	NOV	DEC	SEP	OCT	NOV	DEC				
4.1.1.5 INSTRUMENT DESIGN ENGINEERING																		
4.1.1.5.1 DESIGN ENGINEERING MANAGEMENT																		
1M51000140	Design Engineering Travel FY06	58	0	03OCT05*	23DEC05	91												
4.1.1.5.3 FABRICATION ENGINEERING																		
1M53000150	Stockroom M&S FY06	58	0	03OCT05*	23DEC05	508												
1M53000200	Shop Clerk FY06	58	0	03OCT05*	23DEC05	508												
4.1.1.5.4 THERMAL ENGINEERING (LM)																		
1M54000135	(PR) Thermal Engineering (LM) FY06	1	0	03OCT05*	03OCT05	49												



Activity ID	Activity Description	Orig Dur	% Comp	Early Start	Early Finish	Total Float	FY05		FY06	
							SEP	OCT	NOV	DEC
4.1.2 SYSTEM ENGINEERING										
4.1.2.7 MANAGEMENT & PLANNING										
4.1.2.7.1 MANAGEMENT										
2S6	Start FY06	0	0	01OCT05*		0				

Start FY06

Activity ID	Activity Description	Orig Dur	% Comp	Early Start	Early Finish	Total Float	FY05		FY06	
							SEP	OCT	NOV	DEC
4.1.4 TRACKER										
4T000105	Start of FY 2006	0	0	03OCT05*		155		Start of FY 2006		
4T000050	Fit. Modules 3 thru 16 ready for Integration	0	0		02NOV05	458			Fit. Modules 3 thru 16	
4.1.4.1 TRACKER MANAGEMENT										
4.1.4.1.1 MANAGEMENT										
4.1.4.1.1.2 TRACKER SYSTEM ENGINEER										
4T11RB510	Support Thru Ship to NRL for Env Test	40	0	03OCT05*	29NOV05	526				Support Thru Ship to NRL for Env Test
4.1.4.4 TOWER STRUCTURE & ASSEMBLY										
4.1.4.4.2 TOWER CABLE PLANT (SLAC/UCSC)										
4.1.4.4.2.2 FABRICATE FLEX CIRCUIT CABLES (UCSC)										
4T42S005	(Rec) NR, Qual Units/Layouts 2nd Src Flex Cable	1	0	03OCT05*	03OCT05	569		(Rec) NR, Qual Units/Layouts 2nd Src Flex Cable		
4T42S230	(Rec) TWR 15 2nd Src Flex Cable in Italy	1	0	03OCT05*	03OCT05	569		(Rec) TWR 15 2nd Src Flex Cable in Italy		
4T42S250	(Rec) TWR 16 2nd Src Flex Cable in Italy (5-16)	1	0	03OCT05*	03OCT05	569		(Rec) TWR 16 2nd Src Flex Cable in Italy (5-16)		
4T00445973	(Rec) Tower 15 Flex Circuit Cable in Italy (not)	3	0	03OCT05	05OCT05	567		(Rec) Tower 15 Flex Circuit Cable in Italy (not)		
4T00445983	(Rec) Tower 16 Flex Circuit Cable in Italy (not)	3	0	03OCT05*	05OCT05	567		(Rec) Tower 16 Flex Circuit Cable in Italy (not)		
4.1.4.4.3 TOWER ASSEMBLY										
4.1.4.4.3.6 FLIGHT TOWER ASSEMBLY (INFN)										
4.1.4.4.3.6.A Tower 8 Assembly (INFN)										
4T052173	Ship Tower 8 to SLAC	3	0	05OCT05*	07OCT05	14		Ship Tower 8 to SLAC		
4T052171	Receiving & Testing TWR 8	2	0	10OCT05	11OCT05	14		Receiving & Testing TWR 8		
4T052176	AV: Deliver Flight Towers 8 to I & T	0	0		11OCT05	14		AV: Deliver Flight Towers 8 to I & T		
4.1.4.4.3.6.E Tower 12 Assembly (INFN)										
4T052371	Receiving & Testing TWR 12	4*	25	30SEP05A	05OCT05	17		Receiving & Testing TWR 12		
4T052376	AV: Deliver Flight Towers 12 to I & T	0	0		05OCT05	17		AV: Deliver Flight Towers 12 to I & T		
4.1.4.4.3.6.F Tower 13 Assembly (INFN)										
4T052470	Receiving & Testing TWR 13	3	0	05OCT05*	07OCT05	16		Receiving & Testing TWR 13		
4T052475	AV: Deliver Flight Towers 13 to I & T	0	0		07OCT05	16		AV: Deliver Flight Towers 13 to I & T		
4.1.4.4.3.6.G Tower 14 Assembly (INFN)										
4T052473	Ship Tower 14 to SLAC	1	0	05OCT05*	05OCT05	16		Ship Tower 14 to SLAC		
4T052471	Receiving & Testing TWR 14	2	0	06OCT05	07OCT05	16		Receiving & Testing TWR 14		
4T052476	AV: Deliver Flight Towers 14 to I & T	0	0		07OCT05	16		AV: Deliver Flight Towers 14 to I & T		
4.1.4.4.3.6.H Tower 15 Assembly (INFN)										
4T052565	Tower 15 Environmental Testing	3	0	03OCT05*	05OCT05	474		Tower 15 Environmental Testing		
4T052560	Pre-Ship Testing TWR 15	1	0	06OCT05	06OCT05	474		Pre-Ship Testing TWR 15		
4T052572	Ship Tower 15 to SLAC	1	0	07OCT05	07OCT05	474		Ship Tower 15 to SLAC		
4T052570	Receiving & Testing TWR 15	5	0	10OCT05	14OCT05	474		Receiving & Testing TWR 15		
4T052575	AV: Deliver Flight Towers 15 to I & T	0	0		14OCT05	471		AV: Deliver Flight Towers 15 to I & T		
4.1.4.4.3.6.I Tower 16 Assembly (INFN)										
4T052556	Electrical Test Tower 16	4	0	03OCT05	06OCT05	462		Electrical Test Tower 16		
4T052566	Tower 16 Environmental Testing	10	0	07OCT05	20OCT05	462		Tower 16 Environmental Testing		
4T052561	Pre-Ship Testing TWR 16	3	0	21OCT05	25OCT05	462		Pre-Ship Testing TWR 16		
4T052573	Ship Tower 16 to SLAC	2	0	26OCT05	27OCT05	462		Ship Tower 16 to SLAC		
4T052571	Receiving & Testing TWR 16	3	0	28OCT05	02NOV05	462		Receiving & Testing TWR 16		
4T052576	AV: Deliver Flight Towers 16 to I & T	0	0		02NOV05	458		AV: Deliver Flight Towers 16 to I & T		

Activity ID	Activity Description	Orig Dur	% Comp	Early Start	Early Finish	Total Float	FY05		FY06	
							SEP	OCT	NOV	DEC
4.1.4.5 TRACKER TEST & CALIBRATION										
4.1.4.5.3 FLIGHT TOWER TESTING (INFN)										
4T053600	Flight Tower Test Support (INFN)	120*	83	11MAY05A	28OCT05	546				

Activity ID	Activity Description	Orig Dur	% Comp	Early Start	Early Finish	Total Float	FY05	FY06									
							SEP	OCT	NOV	DEC							
<b>4.1.7 ELECTRONICS</b>							95	12.19	263	10.17	24.31	7	14.21	285	12.19	26	
7E00000100	Start of Envir. Testing @ NRL	0	0	23DEC05		509										Start of Envir. Testing @ NRL	
7ED0000070	LAT Turnover	0	0	23DEC05*		509										LAT Turnover	
<b>4.1.7.1 ELECTRONICS MANAGEMENT</b>																	
7ETVAC0030	TVAC Labor Oct/Nov FY06	41	0	03OCT05	30NOV05	525										TVAC Labor	
7EN1000007	Management Oct05 - Dec05 (SLAC)	58	0	03OCT05	23DEC05	508										Management	
<b>4.1.7.4 DATAFLOW ELECTRONICS (TEMs + PROCESSOR FARM)</b>																	
<b>4.1.7.4.3 TKR/CAL TEM ELECTRONICS</b>																	
1MDOE00040	Tower Electronics Module - 8th Unit	0	0		30SEP05	566										Tower Electronics Module - 8th Unit	
1MDOE00050	Tower Electronics Module - 16th Unit	0	0		30SEP05	566										Tower Electronics Module - 16th Unit	
<b>4.1.7.4.4 GASU ACD EM ELECTRONICS</b>																	
1MDOE00070	GASU	0	0		22NOV05	529										GASU	
<b>4.1.7.4.4.4 FLIGHT UNITS</b>																	
<b>4.1.7.4.4.4.3 FLIGHT UNIT FAB, ASSEMBLY &amp; TEST</b>																	
7E44000870	Assembly/Inspect/Coat	92*	52	26JUL05A	05DEC05	498										Assembly/Inspect/Coat	
7E44000900	Functional Test	1	0	03OCT05	03OCT05	531										Functional Test	
7E44000910	Interface test	1	0	04OCT05	04OCT05	531										Interface test	
7E44000920	Performance Test	1	0	05OCT05	05OCT05	531										Performance Test	
7E44000930	Ambient pressure thermal cycle test	7	0	06OCT05	14OCT05	531										Ambient pressure thermal cycle test	
7E44000950	Functional Test	1	0	17OCT05	17OCT05	531										Functional Test	
7E44000960	IA: GASU Flight Unit	0	0		05DEC05	498										IA: GASU Flight Unit	
<b>4.1.7.4.4.5 GASU BOX INTEGRATION</b>																	
7E44500500	Vendor Assemble/Test GASU Box Summary	192*	50	22MAR05A	21DEC05	498										Vendor Assemble/Test GASU Box Summary	
7EC2000060	Pack/Ship/Unpack Protoflight GASU Box	2	0	03OCT05	04OCT05	23										Pack/Ship/Unpack Protoflight GASU Box	
7E44500501	CO#1 to AF for GASU Box Mods	21	0	03OCT05*	31OCT05	545										CO#1 to AF for GASU Box Mods	
7EC22E0000	Protoflight GASU Box ready for testing	0	0		04OCT05	23										Protoflight GASU Box ready for testing	
7EC2000070	Mass/TC Test	11	0	05OCT05	19OCT05	23										Mass/TC Test	
7EC2000080	Vibration Test	4	0	20OCT05	25OCT05	23										Vibration Test	
7EC2000110	Thermal Vacuum Test	8	0	26OCT05	04NOV05	23										Thermal Vacuum Test	
7EC2000100	EMI/EMC Test	11	0	07NOV05	21NOV05	23										EMI/EMC Test	
7EC2000120	Review I&T Protoflight Unit	1	0	22NOV05	22NOV05	23										Review I&T Protoflight Unit	
7EC2000125	iAV: GASU Box Protoflight Unit	0	0		22NOV05	23										iAV: GASU Box	
7EC2000130	Integrate FU GASU Box	2	0	06DEC05	07DEC05	498										Integrate FU GASU Box	
7EC2000140	Pack/Ship/Unpack FU GASU Box	3	0	08DEC05	12DEC05	498										Pack/Ship/Unpack FU GASU Box	
7EC2000150	Mass/TC Test	6	0	13DEC05	21DEC05	498										Mass/TC Test	
7EC2000170	Vibration Test	2	0	22DEC05	23DEC05	498										Vibration Test	
<b>4.1.7.4.5 LAT COMMUNICATION BOARD</b>																	
1MDOE00060	LAT Communication Board	0	0		06OCT05	562										LAT Communication Board	
<b>4.1.7.4.5.4 FLIGHT UNITS</b>																	
<b>4.1.7.4.5.4.3 FLIGHT UNIT FAB, ASSEMBLY &amp; TEST</b>																	
7E45000940	Ambient pressure thermal cycle test	1	0	03OCT05	03OCT05	10										Ambient pressure thermal cycle test	
7E45000950	Pack/Ship/Unpack LCB FUs to SLAC	4	0	03OCT05	06OCT05	10										Pack/Ship/Unpack LCB FUs to SLAC	
7E45000950	Functional Test	5	0	03OCT05	07OCT05	10										Functional Test	

Activity ID	Activity Description	Orig Dur	% Comp	Early Start	Early Finish	Total Float	FY05	FY06				
							SEP	OCT	NOV	DEC		
7E4500096C	AV: LCB Flight Units (1/2 of 6)	0	0		06OCT05	10						AV: LCB Flight Units (1/2 of 6)
7E4500096E	IA: LCB Flight Units (3/4 of 6)	0	0		27OCT05	532						IA: LCB Flight Units (3/4 of 6)
7E4500097C	IA: LCB Flight Units (5/6 of 6)	0	0		17NOV05	532						IA: LCB Flight Units (5/6 of 6)
4.1.7.4.7 DATA CPU BACKPLANE												
4.1.7.4.7.3 FLIGHT UNITS												
7E47300500	Vendor Data CPU BP Assembly/Test Summary	97*	85	24MAY05A	10OCT05	8						Vendor Data CPU BP Assembly/Test Summary
4.1.7.4.7.3.3 FLIGHT UNIT FAB, ASSEMBLY & TEST												
7E4733051C	Assembly/Inspect/Coat	80*	98	13JUN05A	04OCT05	8						Assembly/Inspect/Coat
7E4733056C	Ambient pressure thermal cycle test	1	0	03OCT05	03OCT05	8						Ambient pressure thermal cycle test
7E4733058C	Functional Test	1	0	04OCT05	04OCT05	8						Functional Test
7E4733058E	Pack/Ship/Unpack FU EPU B/P to SLAC	4	0	05OCT05	10OCT05	8						Pack/Ship/Unpack FU EPU B/P to SLAC
7E4733059C	IA: Data CPU B/P Flight Units (1/2 of 6)	0	0		10OCT05	8						IA: Data CPU B/P Flight Units (1/2 of 6)
7E4733059E	IA: Data CPU B/P Flight Units (3/4 of 6)	0	0		09NOV05	528						IA: Data CPU B/P Flight Units (3/4 of 6)
7E4733060C	IA: Data CPU B/P Flight Units (5/6 of 6)	0	0		23NOV05	528						IA: Data CPU B/P Flight Units (5/6 of 6)
4.1.7.4.8 GASU GLOBAL TRIGGER (GLT) ELECTRONICS												
4.1.7.4.8.4 FLIGHT UNITS												
4.1.7.4.8.4.3 FLIGHT UNIT FAB, ASSEMBLY & TEST												
7E8G00078C	GLT Flight Unit w/ FU GASU ACD EM	94*	50	22JUL05A	05DEC05	498						GLT Flight Unit w/ FU GASU ACD EM
4.1.7.4.9 TEST BED DATA FLOW												
1MDOE00080	Test Bed	0	0		30SEP05*	0						Test Bed
7E48000117	Updates/Testing - Q106	58	0	03OCT05	23DEC05	508						Updates/Testing - Q106
7E48000120	Updates/Testing - FY06	58	0	03OCT05	23DEC05	508						Updates/Testing - FY06
4.1.7.5 SPACECRAFT INTERFACE UNIT												
7EC3000195	Labor for SIU/EPU Assem/Test - Q106	58	0	03OCT05	23DEC05	508						Labor for SIU/EPU Assem/Test - Q106
1MDOE00090	Spacecraft Interface Unit	0	0		20DEC05	511						Spacecraft Interface Unit
4.1.7.5.2 SPACECRAFT - COMMUNICATIONS CARD												
7E20004650	Major Review Flight Readiness (SIB)	0	0		30SEP05	14						Major Review Flight Readiness (SIB)
4.1.7.5.2.4 FLIGHT UNITS												
4.1.7.5.2.4.2 QUALIFICATION UNIT FAB, ASSEMBLY & TEST												
7E5240050C	Vendor SIB Assembly/Test Summary	113*	80	24MAY05A	01NOV05	527						Vendor SIB Assembly/Test Summary
4.1.7.5.2.4.3 FLIGHT UNIT FAB, ASSEMBLY & TEST												
7E5200095E	Pack/Ship/Unpack Final FU SIBs to SLAC	4	0	03OCT05	06OCT05	10						Pack/Ship/Unpack Final FU SIBs to SLAC
7E5200096C	IA: SIB Flight Units (1/2 of 6)	0	0		06OCT05	10						IA: SIB Flight Units (1/2 of 6)
7E5200097C	IA: SIB Flight Units (3/4 of 6)	0	0		01NOV05	527						IA: SIB Flight Units (3/4 of 6)
7E5200098C	IA: SIB Flight Units (5/6 of 6)	0	0		28NOV05	527						IA: SIB Flight Units (5/6 of 6)
4.1.7.5.3 GASU EVENT BUILDER ELECTRONICS												
4.1.7.5.3.4 FLIGHT UNITS												
4.1.7.5.3.4.3 FLIGHT UNIT FAB, ASSEMBLY & TEST												
7E5300087C	GASU EB Flight Unit w/ FU GASU ACD EM	94*	40	22JUL05A	05DEC05	498						GASU EB Flight Unit w/ FU GASU ACD EM
4.1.7.5.4 SIU BACKPLANE												
4.1.7.5.4.3 FLIGHT UNITS												
4.1.7.5.4.3.2 QUALIFICATION UNIT FAB, ASSEMBLY & TEST												
7E5430050C	Vendor SIU BP Assembly/Test Summary	97*	85	24MAY05A	10OCT05	8						Vendor SIU BP Assembly/Test Summary
4.1.7.5.4.3.3 FLIGHT UNIT FAB, ASSEMBLY & TEST												
7E5433051C	Assembly/Inspect/Coat	80*	98	13JUN05A	04OCT05	8						Assembly/Inspect/Coat

Activity ID	Activity Description	Orig Dur	% Comp	Early Start	Early Finish	Total Float	FY05		FY06	
							SEP	OCT	NOV	DEC
7E54330560	Ambient pressure thermal cycle test	1	0	03OCT05	03OCT05	8				
7E54330580	Functional Test	1	0	04OCT05	04OCT05	8				
7E54330585	Pack/Ship/Unpack FU SIU B/P to SLAC	4	0	05OCT05	10OCT05	8				
7E54330590	IA: SIU B/P Flight Units (1/2 of 6)	0	0		10OCT05	8				
7E54330600	IA: SIU B/P Flight Units (3/4 of 6)	0	0		09NOV05	528				
7E54330610	IA: SIU B/P Flight Units (5/6 of 6)	0	0		23NOV05	528				
<b>4.1.7.5.5 EPU/SIU BOX INTEGRATION</b>										
7EC5520000	Integrate SIU Box	22*	0	03OCT05	01NOV05	515				
<b>4.1.7.5.5.1 SIU/EPU PROTOFLIGHT BOX INTEGRATION</b>										
7EC3000050	Integrate Protoflight EPU/SIU Box	4*	0	03OCT05	06OCT05	537				
7EC3000070	TC Test	3	0	07OCT05	11OCT05	537				
7EC3000080	Vibration Test	4	0	12OCT05	17OCT05	537				
7EC3000110	Thermal Vacuum Test	6	0	18OCT05	25OCT05	537				
7EC3000100	EMI/EMC Test	11	0	26OCT05	09NOV05	537				
7EC3000120	Review I&T Protoflight Unit	1	0	10NOV05	10NOV05	537				
7EC3000125	AV: Protoflight SIU/EPU Box	0	0		10NOV05	537				
<b>4.1.7.5.5.2 SIU/EPU FLIGHT BOX INTEGRATION</b>										
7EC3000121	ND: LCB Flight Units	0	0		06OCT05	10				
7EC3000130	Integrate FU EPUSIU Box	8	0	11OCT05	11OCT05	8				
7EC3000150	TC Test	2	0	12OCT05	13OCT05	8				
7EC3000170	Vibration Test	2	0	14OCT05	17OCT05	8				
7EC3000190	Thermal Vacuum Test	6	0	18OCT05	25OCT05	8				
7EC3000180	EMI/EMC Test	2	0	26OCT05	27OCT05	8				
7EC3000197	TV Test	5	0	28OCT05	01NOV05	13				
7EC3000200	Review I&T Flight Unit	3	0	28OCT05	01NOV05	8				
7EC33E0000	AV: 1st Flight EPU/SIU Box for I&T	0	0		02NOV05	8				
7EC33E0010	AV: 2nd Flight EPU/SIU Box for I&T	0	0		14NOV05	8				
7EC33E0020	AV: 3rd Flight EPU/SIU Box for I&T	0	0		23NOV05	8				
7EC33E0030	AV: 4th Flight EPU/SIU Box for I&T	0	0		06DEC05	11				
7EC33E0040	AV: 5th Flight EPU/SIU Box for I&T	0	0		20DEC05	11				
<b>4.1.7.6 POWER CONDITIONING</b>										
1MDOE00100	Power Conditioning	0	0		06OCT05	562				
<b>4.1.7.6.2 POWER DISTRIBUTION UNIT (PDU)</b>										
<b>4.1.7.6.2.3 FLIGHT UNITS</b>										
<b>4.1.7.6.2.3.2 QUALIFICATION UNIT FAB, ASSEMBLY &amp; TEST</b>										
7E62000500	Vendor Assemble/Test Summary	205*	90	01FEB05A	18NOV05	519				
7E62000501	CO#1 to AF for PDU Box Mods	20	0	01NOV05*	30NOV05	525				
<b>4.1.7.6.2.3.3 FLIGHT UNIT FAB, ASSEMBLY &amp; TEST</b>										
7E20008840	Assembly/Inspect/Coat	122*	95	16MAY05A	04NOV05	541				
<b>4.1.7.6.2.4 PDU BOX INTEGRATION</b>										
7EC6000130	Integrate FU PDU Box	35*	34	15SEP05A	02NOV05	519				
7EC6000220	Labor for PDU Assem/Test - Q106	42	0	03OCT05	01DEC05	524				



Activity ID	Activity Description	Orig Dur	% Comp	Early Start	Early Finish	Total Float	FY05		FY06																			
							SEP	OCT	NOV	DEC																		
7EC6000125	AV: Protoflight PDU Box for I&T	0	0		06OCT05*	57	95	12	19	26	3	10	17	24	31	7	14	21	28	5	12	19	26					
7EC6000135	Pack/Ship/Unpack FU PDU Box	3	0	03NOV05	07NOV05	519																						
7EC6000150	Mass/TC Test	9	0	08NOV05	18NOV05	519																						
7EC6000160	Vibration Test	2	0	21NOV05	22NOV05	519																						
7EC6000190	Thermal Vacuum Test	6	0	23NOV05	02DEC05	519																						
7EC6000180	EMI/EMC Test	2	0	05DEC05	06DEC05	519																						
7EC6000200	Review I&T Flight Unit	1	0	07DEC05	07DEC05	519																						
7EC65E0000	AV: Flight PDU Box for I&T	0	0		08DEC05	519																						
4.1.7.6.7 CRATE POWER SUPPLY																												
7E20007900	Major Review Flight Readiness (CPS)	0	0		07OCT05	9																						
4.1.7.6.7.3 FLIGHT UNITS																												
4.1.7.6.7.3.3 FLIGHT UNIT FAB, ASSEMBLY & TEST																												
7E67330510	Assembly/Inspect/Coat	79	99	13JUN05A	03OCT05	9																						
7E67330560	Ambient pressure thermal cycle test	1	0	03OCT05	03OCT05	9																						
7E67330580	Functional Test	5	0	03OCT05	07OCT05	9																						
7E67330585	Pack/Ship/Unpack FU CPS to SLAC	4	0	04OCT05	07OCT05	9																						
7E67330590	IA: CPS Flight Units (1/2 of 6)	0	0		07OCT05	9																						
7E67330600	IA: CPS Flight Units (3/4 of 6)	0	0		11NOV05	527																						
7E67330610	IA: CPS Flight Units (5/6 of 6)	0	0		28NOV05	527																						
4.1.7.8 CABLE HARNESS																												
4.1.7.8.3 FLIGHT UNIT																												
7E83000006	Common Cables Fab & Assembly	152*	99	14MAR05A	14OCT05	28																						
7E83000010	AV: Flight Cable Harness for I&T	0	0		14OCT05	28																						
4.1.7.9 FLIGHT SOFTWARE																												
7EAV050030	AV: Release FSW for FQT	0	0		17OCT05*	555																						
7EAV050040	AV: FQT Scripts Complete	0	0		24OCT05	550																						
7EAV050060	AV: FQT Complete	0	0		31OCT05*	545																						
7EAV060010	AV: FSW RFI to I&T	0	0		01DEC05	22																						
7EAV060020	AV: Delta Test Readiness Review	0	0		09DEC05	518																						
4.1.7.9.6 FLIGHT UNIT																												
4.1.7.9.6.2 FU CODE DEVELOP/TEST																												
7EN9624020	iA: FU Code Release	0	0		01DEC05	22																						
4.1.7.9.6.3 FU UNIT TESTING																												
7EN9630010	FU Unit Testing	223*	95	22NOV04A	17OCT05	50																						
7EN9630020	FU Unit Testing - Contributed	223*	80	22NOV04A	17OCT05	50																						
7EN9630030	FU Unit Testing	223*	95	22NOV04A	17OCT05	50																						
7EN9633000	SIU Specific Application Code	223*	70	22NOV04A	17OCT05	50																						
7EN9631000	SIU/EPU Common Application Code	191*	98	18JAN05A	17OCT05	50																						
7EN9632000	EPU Specific Application Code	146*	80	23MAR05A	17OCT05	50																						
7EN9633090	Mode control	98*	89	31MAY05A	17OCT05	50																						
7EN9633100	iA: FU Unit Testing Complete	0	0		17OCT05	50																						
7EN9633110	FU Unit Testing Complete	0	0		17OCT05	50																						

Activity ID	Activity Description	Orig Dur	% Comp	Early Start	Early Finish	Total Float	FY05				FY06												
							SEP	OCT	NOV	DEC	SEP	OCT	NOV	DEC									
<b>4.1.7.9.6.4 FU BUILD TESTING</b>							95	12	19	26	3	10	17	24	31	7	14	21	28	5	12	19	26
7EN9640050	Write Test Scripts	244*	96	29OCT04A	24OCT05	53	Write Test Scripts																
7EN9641000	FU Formal Build Testing (as defined in TRR)-SLAC	8	0	06OCT05	17OCT05	50	FU Formal Build Testing (a																
7EN9641005	FU Formal Build Testing (as defined in TRR)-NRL	8	0	06OCT05	17OCT05	50	FU Formal Build Testing (a																
7EN9643100	FU Formal Build Test Complete	0	0		17OCT05	50	FU Formal Build Test Com																
<b>4.1.7.9.6.5 FU DOCUMENTATION</b>																							
7EN9651010	Version Description Document	397	95	02FEB04A	01NOV05	39	Version Description																
7EN9651020	FU Test Report	397	95	02FEB04A	01NOV05	39	FU Test Report																
7EN9651030	Design Documents	460*	91	02FEB04A	01DEC05	19	Design D																
7EN9651000	FU Documentation	460*	96	02FEB04A	01DEC05	19	FU Docum																
7EN9651040	Development of FSW Long Term Maintenance Plan	106*	60	01JUL05A	01DEC05	524	Developm																
7EN9653100	iA: FU Documentation Complete	0	0		01DEC05	19	iA: FU Documentation Complet																
7EN9653110	FU Documentation Complete	0	0		01DEC05*	19	FU Documentation Complet																
<b>4.1.7.9.6.6 FSW SUPPORT DURING I&amp;T</b>																							
7E962N0000	SLAC based Flight I&T (thru FY05)	173*	0	18FEB05A	24OCT05	492	SLAC based Flight I&T (																
7EN7000050	FSW Support during Integration/Testing (SLAC)	173*	87	18FEB05A	24OCT05	492	FSW Support during Inte																
7EN7000070	Complete: FY05 FSW Support during I&T	0	0		24OCT05*	492	Complete: FY05 FSW Su																
<b>4.1.7.9.7 SCIENCE/SPACECRAFT</b>																							
<b>4.1.7.9.7.2 DEVELOP/TEST (SCI/S/C)</b>																							
7EN9720000	Develop/Test (Science/Spacecraft)	305*	92	17AUG04A	04NOV05	536	Develop/Test (Scien																
7EN9722000	SIU Specific Application Code	305*	92	17AUG04A	04NOV05	536	SIU Specific Applica																
7EN9722010	Event filtering (remaining)	318*	88	17AUG04A	23NOV05	518	Event filterin																
7EN9722030	Response to GBM interrupt/messages	318*	88	17AUG04A	23NOV05	518	Response to																
7EN9722040	GRB detection	318*	88	17AUG04A	23NOV05	518	GRB detecti																
7EN9723000	Develop/Test Complete (Science/Spacecraft)	0	0		23NOV05	523	Develop/Test																
<b>4.1.7.9.7.3 UNIT TESTING (SCI/S/C)</b>																							
7EN9730000	Unit Testing (Science/Spacecraft)	171*	50	01APR05A	02DEC05	518	Unit Testi																
7EN9732000	SIU Specific Application Code	171*	20	01APR05A	02DEC05	518	SIU Speci																
7EN9731000	SIU/EPU Common Application Code	155*	80	25APR05A	02DEC05	518	SIU/EPU C																
7EN9732010	Event filtering (remaining)	5	0	28NOV05	02DEC05	518	Event filtering (remaing																
7EN9732030	Response to GBM interrupt/messages	5	0	28NOV05	02DEC05	518	Respons																
7EN9732040	GRB detection	5	0	28NOV05	02DEC05	518	GRB detection																
7EN9733000	Unit Testing Complete (Science/Spacecraft)	0	0		02DEC05	518	Unit Testi																
<b>4.1.7.9.7.4 FORMAL TESTING (SCI/S/C)</b>																							
7EN9750000	Formal Testing (SCI/S/C)	5	0	05DEC05	09DEC05	518	Formal Testing (SCI/S/C)																
<b>4.1.7.9.7.5 DOCUMENTATION (SCI/S/C)</b>																							
7EN9741020	Version Description Document	490*	93	01DEC03A	18NOV05	531	Version Descr																
7EN9741030	Test Report	389*	91	03MAY04A	18NOV05	531	Test Report																
7EN9741040	Design Documents	389*	91	03MAY04A	18NOV05	531	Design Docum																
7EN9741070		1	0	03OCT05	03OCT05	565																	
7EN9741050	iA: Documentation Complete	0	0		18NOV05	531	iA: Documenta																
7EN9741060	Documentation Complete	0	0		09DEC05	518	Documentation Complet																

Activity ID	Activity Description	Orig Dur	% Comp	Early Start	Early Finish	Total Float	FY05		FY06			
							SEP	OCT	NOV	DEC		
4.1.7.A EGSE & OPERATIONS							95	12	19	26	3	
1MDOE00110	Electronic Ground Support Equipment	0	0		01DEC05	524					▽Electronic	
7EA0000060	EGSE Flight Unit	0	0		01DEC05	22					EGSE Flight Unit	
4.1.7.A.2 EGSE DEVELOPMENT												
4.1.7.A.2.5 FLIGHT UNIT SUPPORT												
7EA0000970	AV: Final EGSE incl S/C Sim, FSW for I&T	0	0		01DEC05	22					▽AV: Final E	
4.1.7.C INSTRUMENT INTEGRATION & TEST												
1MDOE00120	Integration and Test Support	0	0		30SEP05*	0					▽Integration and Test Support	
4.1.7.C.5 INSTRUMENT I&T												
4.1.7.C.5.3 FLIGHT UNIT												
7EC5000530	Procure Cables for NRL Environ. Testing FY06	21	0	03OCT05	31OCT05	545					▽Procure Cables for NR	
7EC5000125	SLAC Support for Instr. I&T - Q106	58	0	03OCT05	23DEC05	508					▽SL	
7EC5000130	SLAC Support for Instr. I&T - FY06	58	0	03OCT05	23DEC05	508					▽SL	

Activity ID	Activity Description	Orig Dur	% Comp	Early Start	Early Finish	Total Float	FY05		FY06																
							SEP	OCT	NOV	DEC															
4.1.8 MECHANICAL SYSTEMS							95	12	19	26	3	10	17	24	31	7	14	21	28	5	12	19	26		
4.1.8.1 MANAGEMENT																									
4.1.8.1.1 MANAGEMENT AND ENGINEERING (SLAC)																									
4.1.8.1.1.1 MECH SYSTEMS MILESTONES																									
8M0002100	AV: I-PSR Material Ready		0	0		30SEP05																			
8M0001600	LAT Integration started (driven by 4.1.9)		0	0	03OCT05																				
4.1.8.1.2 TRAVEL (SLAC)																									
8M0003400	Travel to I-PSR at GSFC		4	0	03OCT05	06OCT05																			
4.1.8.1.4 SUB-CONTRACTOR MANAGEMENT (LM)																									
4.1.8.1.4.1 PHASE 1/2 PROGRAM MANAGEMENT																									
8M0005060	(PR) Program Management FY06		1	0	03OCT05	03OCT05																			
4.1.8.1.4.3 SUB-CONTRACT PHASE 2 MILESTONES																									
8M0006400	Final LAT PSR Reports, Chart Package due		0	0	03OCT05																				
4.1.8.5 THERMAL CONTROL SYSTEM (SLAC)																									
4.1.8.5.2 CONTROL SYSTEM FABRICATION (SLAC)																									
8M0019407	Test Qual Heater Control Box		20	0	03OCT05	28OCT05																			
4.1.8.6 RADIATORS, HEAT PIPES, THERM TEST, X-LAT (LM)																									
4.1.8.6.7 LAT THERMAL-BALANCE TEST SUPPORT (LM)																									
8M670015	Deliver T-Bal test reports, TMM to GSFC		0	0		30SEP05																			
4.1.8.8 FABRICATION, ASSEMBLY, AND TEST																									
4.1.8.8.7 GRID BOX ASSY (GBA)																									
4.1.8.8.7.3 GRID BOX ASSY OPERATIONS																									
4.1.8.8.7.3.2 GRID BOX BASE ASSY OPERATIONS																									
8M0045366	GBBA #1 TCS Operations		0*	0	03OCT05*	30SEP05																			
8M0045365	GBBA #1 functional test		2	0	03OCT05	04OCT05																			
4.1.8.8.8 GRID BOX TEST																									
4.1.8.8.8.1 GRID BOX TEST ENG SUPPORT																									
8M0045395	Write SLT test report		20	0	04OCT05	31OCT05																			
8M0045390	SLT test readiness review		10*	0	24OCT05*	04NOV05																			
4.1.8.8.8.2 GRID BOX TEST FAB																									
8M0045440	(REC) SLT facility		1	0	03OCT05*	03OCT05																			
4.1.8.8.8.3 GRID BOX TEST OPERATIONS																									
8M0045480	SLT Operations (prep, test, tear down) #2		52*	50	21JUL05A	03OCT05																			
8M0045481	Static Load Test Complete #2		0	0		21OCT05*																			
4.1.8.9 LAT I&T SUPPORT																									
4.1.8.9.1 LAT INTEGRATION SUPPORT (SLAC)																									
8M0040700	Start LAT integration prep		0	0	03OCT05																				
4.1.8.9.2 LAT STRUCTURAL TEST SUPPORT (SLAC)																									
8M0041201	LAT Structural Test Design Support		1	0	03OCT05	03OCT05																			
4.1.8.9.3 LAT THERMAL-VACUUM TEST SUPPORT (SLAC)																									
8M0041801	LAT Thermal Vacuum Test Design Support		9	0	04OCT05*	14OCT05																			
8M0041802	LAT Thermal Vacuum Test Design Support (com)		2	0	17OCT05	18OCT05																			
4.1.8.A MISSION I&T SUPPORT																									
4.1.8.A.3 MISSION THERMAL TEST SUPPORT (LM)																									
8M0044402	(PR) Phase 3 Mission Thermal Test Supt FY06		1	0	03OCT05	03OCT05																			

Activity ID	Activity Description	Orig Dur	% Comp	Early Start	Early Finish	Total Float	FY05				FY06															
							SEP	OCT	NOV	DEC	SEP	OCT	NOV	DEC												
<b>4.1.9 INTEGRATION &amp; TEST</b>							95	12	19	26	3	10	17	24	31	7	14	21	28	5	12	19	26			
9I018200	ND: X-LAT Thermal Plate-Mech to I&T	0	0		30SEP05	61																		▽ND: X-LAT Thermal Plate-Mech to I&T		
9I017205	ND: Flight Tkr Towers 12 RFI	0	0		05OCT05*	17																		▽ND: Flight Tkr Towers 12 RFI		
9I017676	ND: Flight PDU Box Elec to I&T	0	0		06OCT05	57																		▽ND: Flight PDU Box Elec to I&T		
9I017304	ND: Flight Tkr Towers 13 RFI	0	0		07OCT05*	16																		▽ND: Flight Tkr Towers 13 RFI		
9I017005	ND: Flight Tkr Towers 8 RFI	0	0		11OCT05*	14																		▽ND: Flight Tkr Towers 8 RFI		
9I017305	ND: Flight Tkr Towers 14 RFI	0	0		12OCT05*	13																		▽ND: Flight Tkr Towers 14 RFI		
9I016930	ND: Flight Harness-Elec to I&T	0	0		14OCT05*	28																		▽ND: Flight Harness-Elec to I&T		
9I07404	ND: Flight Tkr Towers 15 RFI	0	0		14OCT05*	471																		▽ND: Flight Tkr Towers 15 RFI		
9I017680	ND: Flight Event Process Units-Elec to I&T	0	0		02NOV05	38																		▽ND: Flight Event Process Units-Elec to I&T		
9I07405	ND: Flight Tkr Towers 16-RFI	0	0		02NOV05*	458																		▽ND: Flight Tkr Towers 16-RFI		
9I017675	ND: Flight GASU Box Elec to I&T	0	0		22NOV05	23																		▽ND: Flight GASU Box Elec to I&T		
9I017670	ND: Flight SIU Elec to I&T	0	0		20DEC05	11																		ND: Flight SIU Elec to I&T		
<b>4.1.9.1 I&amp;T MANAGEMENT</b>																								▽Sixteen Tower CPT		
9I018753	Sixteen Tower CPT	0	0	19OCT05		554																				
<b>4.1.9.1.1 MANAGEMENT &amp; ENGINEERING</b>																										
9I00132B	ONE subcontract-(10/1/05 - 12/23/05)	58*	0	03OCT05	23DEC05	49																		▽ONE subcontract-(10/1/05 - 12/23/05)		
9I0113B	I&T Management Support (10/1/05 -12/05)	58*	0	03OCT05	23DEC05	49																		▽I&T Management Support (10/1/05 -12/05)		
9I0113D	I&T Engr Management Support (10/1/05 - 12/23/05)	58*	0	03OCT05	23DEC05	49																		▽I&T Engr Management Support (10/1/05 - 12/23/05)		
<b>4.1.9.1.2 TRAVEL</b>																										
9IN0000166	Travel - 3 months float (10/05 - 12/05)	58*	0	03OCT05	23DEC05	508																		▽Travel - 3 months float (10/05 - 12/05)		
<b>4.1.9.4 MECH GROUND SUPT EQUIP</b>																										
<b>4.1.9.4.5 FLIGHT UNIT</b>																										
<b>4.1.9.4.5.1 LAT INTEGRATION</b>																										
<b>4.1.9.4.5.1.1 ENGINEERING</b>																										
9I009038	Proof Test Def'n, LAT Trans Container	30	0	03OCT05*	11NOV05	40																		▽Proof Test Def'n, LAT Trans Container		
<b>4.1.9.4.5.2 INTEGRATION PREP</b>																										
9I018322	Rad & X-LAT Plate Lift Fixture	0	0		30SEP05	61																		▽Rad & X-LAT Plate Lift Fixture		
<b>4.1.9.4.5.2.1 FAB/ASSEMBLE LAT INT. EQUIP</b>																										
9I014600	(PR) LAT Misc Equip and Fixtures	1	0	03OCT05*	03OCT05	49																		△(PR) LAT Misc Equip and Fixtures		
9I014602	(REC) LAT Misc Equip and Fixtures	1	0	18OCT05	18OCT05	49																		△(REC) LAT Misc Equip and Fixtures		
<b>4.1.9.4.5.2.3 FAB/ASSEMBLE LAT TRANSPORT, STORAGE</b>																										
9I015800	(PR) Misc LAT Transport Containers	1	0	03OCT05*	03OCT05	43																		△(PR) Misc LAT Transport Containers		
9I015710	(REC) LAT Transport Container	1	0	14OCT05*	14OCT05	60																		△(REC) LAT Transport Container		
9I015802	(REC) Misc LAT Transport Containers	1	0	01NOV05	01NOV05	43																		△(REC) Misc LAT Transport Containers		
9I015900	Assemble/Test Transport Equip	10	0	02NOV05	15NOV05	43																		△Assemble/Test Transport Equip		
<b>4.1.9.4.5.4 LAT MECHANICAL TESTING</b>																										
<b>4.1.9.4.5.4.1 ENGINEERING</b>																										
9I009048	Proof Test Lat Trans Cont	5	0	14NOV05	18NOV05	40																		Proof Test Lat Trans Cont		
<b>4.1.9.4.5.4.2 MECHANICAL VIB TEST PREP</b>																										
9I008094	Fab LAT T-Vac Test Stand	60*	33	02SEP05A	29NOV05	35																		▽Fab LAT T-Vac Test Stand		
9I009468	(REC) Ship Cont for LAT Vibe Test Equip	1	0	03OCT05	03OCT05	53																		△(REC) Ship Cont for LAT Vibe Test Equip		
9I009478	VTE Ship Cont to VTE Vendor	0	0		03OCT05	53																		▽VTE Ship Cont to VTE Vendor		
9I008114	LAT T-Vac Test Stand Ready	0	0		29NOV05	35																		LAT T-Vac Test Stand Ready		

Activity ID	Activity Description	Orig Dur	% Comp	Early Start	Early Finish	Total Float	FY05		FY06	
							SEP	OCT	NOV	DEC
91008518	(REC) LAT Vibration Test Fixture	1	0	30NOV05	30NOV05	14	95	12	19	26
91008528	Assemble LAT Vibration Fixture	5	0	01DEC05	07DEC05	14				
<b>4.1.9.5 ONLINE SOFTWARE</b>										
<b>4.1.9.5.5 FLIGHT UNIT</b>										
91025225	LAT EGSE I&T Support	113*	49	15JUL05A	23DEC05	114				
910205276	LICOS (LATTE 5) & Test Script Development	21	68	01AUG05A	31OCT05	28				
91025229	LATTE4/16 Tower/ACD Testing	10	0	09NOV05	22NOV05	11				
91025227	Flight Software Installation & Checkout	15	0	09NOV05	23NOV05	18				
910205286	LICOS (LATTE 5) Validation	20	0	25NOV05	14DEC05	18				
91016810	ND:Final EGSE for Sys Test incl. S/C Sim, FSW	0	0		01DEC05	22				
<b>4.1.9.6 INTEG, FACILITIES, CONFIG &amp; TEST</b>										
<b>4.1.9.6.1 MANAGEMENT &amp; ENGINEERING</b>										
91016513	IFCT Manager* (10/1/05 - 12/23/05)	58*	0	03OCT05	23DEC05	508				
<b>4.1.9.6.2 PREP</b>										
<b>4.1.9.6.2.2 CLEAN ROOM LAB OPERATIONS</b>										
9100692C	(REC)Cleanroom supplies & cleaning service-10/05	1	0	31OCT05*	31OCT05	545				
9100692D	(REC)Cleanroom supplies & cleaning service-11/05	1	0	30NOV05*	30NOV05	525				
9100692E	(REC)Cleanroom supplies & cleaning service-12/05	1	0	23DEC05*	23DEC05	508				
<b>4.1.9.6.4 CALIBRATION UNIT</b>										
<b>4.1.9.6.4.3 SLAC PARTICLE BEAM TEST</b>										
<b>4.1.9.6.4.3.2 PREP</b>										
91007060	Procure End Station A cleanroom	10	0	03OCT05*	14OCT05	473				
91007070	Test beam prep	10	0	07NOV05	18NOV05	458				
91010100	Setup ESA CU cleanroom	10	0	21NOV05	06DEC05	458				
<b>4.1.9.6.4.3.3 TRANSPORT CU TO END STATION A</b>										
91009800	Prep Cal. Unit for Transport	3	0	07DEC05	09DEC05	458				
91024940	Transport CU between Bldg 33 & ESA	1	0	12DEC05	12DEC05	458				
<b>4.1.9.6.5 FLT UNIT</b>										
91017535	IFCT Additional Bus Protection Units (2)	1	0	03OCT05*	03OCT05	565				
91017557	(REC) IFCT Isolation Transformer	1	0	03OCT05*	03OCT05	565				
91017567	(REC) IFCT EGSE	1	0	03OCT05*	03OCT05	565				
91016617D	IFCT Mech Test Team - 10/1/05 - 12/05	58*	0	03OCT05	23DEC05	49				
9101668A	IFCT Electrical Test Team - 10/05 - 12/05	58*	0	03OCT05*	23DEC05	49				
91017553	(REC) IFCT Test Cables	1	0	14OCT05*	14OCT05	556				
<b>4.1.9.6.5.1 LAT INTEGRATION</b>										
91023950	(PR) LAT Transprt from Bldg 33 to Airplane	1	0	31OCT05	31OCT05	34				
91024040	(PR) LAT Airplane Transport	1	0	31OCT05	31OCT05	34				
<b>4.1.9.6.5.1.3 PREP</b>										
91016302	Increased Survey & Alignment Supt of Inspection	97	50	15APR05A	14OCT05	556				
<b>4.1.9.6.5.1.7 TOWERS 7 &amp; 8</b>										
91017821	Rec/Inspect TKR Towers 8	1	0	12OCT05	12OCT05	14				
91017802	Integrate Flight Tkr/Cal Tower 8	1	0	13OCT05*	13OCT05	14				
91018812	Install Tower 8 in Bay 3	2	0	14OCT05	17OCT05	14				



Activity ID	Activity Description	Orig Dur	% Comp	Early Start	Early Finish	Total Float	FY05	FY06								
							SEP	OCT	NOV	DEC						
4.1.9.6.5.1.9 TOWERS 11 & 12							95	12	19	26	3	17	14	21	28	5
9I017302	Integrate Flight Tkr/Cal Tower 11	1	0	03OCT05*	03OCT05	20										Integrate Flight Tkr/Cal Tower 11
9I018732	Install Tower 11 in Bay 15	2	0	04OCT05	05OCT05	22										Install Tower 11 in Bay 15
9I0172219	Rec/Inspect TKR Towers 12	1	0	06OCT05	06OCT05	17										Rec/Inspect TKR Towers 12
9I017122	Integrate Flight Tkr/Cal Tower 12	1	0	07OCT05	07OCT05	17										Integrate Flight Tkr/Cal Tower
9I017132	Install Towers 12 in Bay 6	2	0	10OCT05	11OCT05	18										Install Towers 12 in Bay 6
4.1.9.6.5.1.A TOWERS 13 & 14																
9I017328	Rec/Inspect Towers 14 Electronics	1	0	03OCT05	03OCT05	21										Rec/Inspect Towers 14 Electron
9I0172320	Rec/Inspect TKR Towers 13	1	0	10OCT05	10OCT05	16										Rec/Inspect TKR Towers 13
9I017402	Integrate Flight Tkr/Cal Tower 13	1	0	11OCT05	11OCT05	16										Integrate Flight Tkr/Cal Towe
9I018742	Install Tower 13 in Bay 7	2	0	12OCT05	13OCT05	16										Install Tower 13 in Bay 7
9I0172330	Rec/Inspect TKR Towers 14	1	0	13OCT05	13OCT05	13										Rec/Inspect TKR Towers 14
9I018412	Integrate Flight Tkr/Cal Tower 14	1	0	14OCT05	14OCT05	13										Integrate Flight Tkr/Cal Tow
9I018752	Install Tower 14 in Bay 2	2	0	17OCT05	18OCT05	13										Install Tower 14 in Bay 2
4.1.9.6.5.1.B TOWERS 15 & 16																
9I0172332	Rec/Inspect TKR Towers 15	1	0	17OCT05	17OCT05	471										Rec/Inspect TKR Towers 15
9I017502	Deliver as spare #1 to Stores	1	0	18OCT05	18OCT05	471										Deliver as spare #1 to Sto
9I018853	Rec/Inspect TKR Towers 16	1	0	03NOV05	03NOV05	458										Rec/Inspect TKR Tow
9I017852	Deliver as Spare #2 to Stores	1	0	04NOV05	04NOV05	458										Deliver as Spare #2
4.1.9.6.5.1.E LAT-WIDE ELECTRONICS																
9I018784	Integrate EMI Skirt / Htr Switch boxes	3	0	03OCT05*	05OCT05	58										Integrate EMI Skirt / Htr Switch
9I018771	Rec/Inspect/Install PDU	2	0	31OCT05	01NOV05	41										Rec/Inspect/Install PD
9I018786	Optical & Muon Survey	2	0	31OCT05	01NOV05	11										Optical & Muon Surve
9I018772	Rec/Inspect/Install EPU	1	0	03NOV05	03NOV05	38										Rec/Inspect/Install E
9I018770	Rec/Inspect/Install GASU	1	0	23NOV05	23NOV05	23										Rec/Inspect/Install GASU
9I018773	Rec/Inspect/Install SIU	1	0	21DEC05	21DEC05	11										Rec/Inspect/Install SIU
9I017630	Integrate LAT-wide Electronics (DAQ)	5	0	22DEC05	28DEC05	11										Integrate LAT-wide Electronics (DAQ)
4.1.9.6.5.1.F ACD																
9I018002	Integrate / Test Flight ACD on Grid	5	0	02NOV05	08NOV05	11										Integrate / Test Flig
4.1.9.6.5.1.G CROSS-LAT THERMAL PLATE																
9I018312	IN: Rad & X-LAT Plate Lift Fixture	0	0		30SEP05	61										IN: Rad & X-LAT Plate Lift Fixture
9I018930	Rec/Inspect Cross-LAT Thermal Plate	1	0	03OCT05	03OCT05	61										Rec/Inspect Cross-LAT Thermo
9I018302	Integ Cross-LAT thermal plate/Cooling GSE	1	0	15DEC05	15DEC05	21										Integ
4.1.9.6.5.2 COMPREHENSIVE TEST																
4.1.9.6.5.2.2 PREP																
9I023812	Mechanical Fit Checks	1	0	15DEC05	15DEC05	21										Mechanical Fit Checks
9I023810	Light Tight Tests	2	0	15DEC05	16DEC05	21										Light Tight Tests
4.1.9.6.5.2.3 EXECUTE TEST																
9I018402	16 Tower Comprehensive Performance Test	10	0	19OCT05	28OCT05	17										16 Tower Comprehens
9I022603	Radiator fit Check	1	0	15DEC05	15DEC05	22										Radiator fit Check
9I018404	End to End Tests	2	0	15DEC05	16DEC05	21										End to End Tests

Activity ID	Activity Description	Orig Dur	% Comp	Early Start	Early Finish	Total Float	FY05		FY06	
							SEP	OCT	NOV	DEC
4.1.9.6.5.5 ENVIRONMENT TEST										
4.1.9.6.5.5.1 TEST PROCEDURE DEVELOPMENT										
9I018600	LAT environmental test procedure development	20	0	31OCT05	29NOV05	35				LAT enviro
4.1.9.7 PARTICLE TEST										
4.1.9.7.5 FLIGHT UNIT										
9I008515	Particle Test Integration Support	271*	0	19NOV04A	23DEC05	114				Pa
9I008519	VdG Belt	1	0	03OCT05*	03OCT05	565				VdG Belt
4.1.9.8 ENVIRONMENTAL TEST										
4.1.9.8.1 MANAGMENT & ENGINEERING										
4.1.9.8.1.2 MEETING SUPPORT										
9I024429A	NRL General Facility Usage / Planning FY05	193*	60	01MAR05A	01DEC05	524				NRL Gene
9I024422	NRL General Facility M & S	58*	0	03OCT05*	23DEC05	49				NF
9I024431	NRL General Facility Usage / Planning FY06	58*	0	03OCT05*	23DEC05	508				NF
4.1.9.8.2 PREP										
4.1.9.8.2.2 TEST FIXTURE PREP										
9I021234	LAT Pathfinder	165*	73	02MAY05A	23DEC05	508				LA
9INRL001	Shipping Container Design, Fab, Test	79*	10	01SEP05A	23DEC05	508				Sh
9I021235	LAT - Equip Receiving & Setup	21*	0	03OCT05*	31OCT05	545				LAT - Equip Receiving
4.1.9.8.5 FLIGHT UNIT										
4.1.9.8.5.2 EMI TEST										
9I019225	NRL Prep for EMI/EMC Testing (FY06)	58*	0	03OCT05	23DEC05	94				NF
4.1.9.8.5.4 TVAC TESTING										
9INRL003	Chamber Mods	66*	33	01SEP05A	05NOV05	803				Chamber Mods
9INRL004	Thermal Control (Sink Plates, CalRods)	66*	33	01SEP05A	05NOV05	803				Thermal Control (Si
4.1.9.9 SCIENCE VERIFICATION, ANALYSIS & CALIBRATION										
4.1.9.9.5 FLIGHT UNIT										
4.1.9.9.5.2 INFRASTRUCTURE										
9I025896	SVAC Support Lat Operations 3/1/05 - 12/05	209*	72	01MAR05A	23DEC05	114				SV




Activity ID	Activity Description	Orig Dur	% Comp	Early Start	Early Finish	Total Float	FY05		FY06	
							SEP	OCT	NOV	DEC
4.1.A PERFORMANCE AND SAFETY ASSURANCE										
4.1.A.1 PERFORMANCE ASSURANCE MANAGEMENT										
4.1.A.1.2 TRAVEL										
AP1001090	Travel: FY06 Q1	58	0	03OCT05	23DEC05	114				
4.1.A.2 QUALITY ASSURANCE										
AP2S000500	QA Support during FY06 LAT Integration - SLAC	58	0	03OCT05	23DEC05	156				

Activity ID	Activity Description	Orig Dur	% Comp	Early Start	Early Finish	Total Float	FY05		FY06		
							SEP	OCT	NOV	DEC	
<b>4.1.B LAT INSTRUMENT SCIENCE OPERATIONS CENTER</b>											
BI00001745	Pre-Environmental Test Review	0	0		30SEP05*	-55					
BI00002000	1st Two Towers Ready for Calibration	0	0		30SEP05*	566					
BI00001712	Ground Readiness Test #3	0	0	03OCT05*		566					
BI00001714	Ground Readiness Test #5	0	0	15NOV05*		161					
BI00001650	IOC S/W Release 1	0	0		05DEC05	522					
<b>4.1.B.1 PROJECT MANAGEMENT</b>											
<b>4.1.B.1.2 MEETINGS &amp; REVIEWS</b>											
<b>4.1.B.1.2.2 IOC INTERNAL REVIEWS</b>											
BI00000320	IOC-CDR Discrepancy Closeouts	30	0	03OCT05	11NOV05	536					
<b>4.1.B.1.3 LOGISTICS MANAGEMENT</b>											
BI13PR0000	(PR) IOC Facility Procurements	1	0	03OCT05	03OCT05	-117					
<b>4.1.B.4 LAT OPERATIONS FACILITY</b>											
BI00000110	ND: Online FU S/W Final Release-I&T to IOC	0	0		30SEP05	566					
<b>4.1.B.4.2 DATA ACQUISITION S/W DEVELOPMENT</b>											
BI00000650	Data Acquisition Management	44	0	03OCT05	05DEC05	39					
BI00000660	Network Interfaces	44	0	03OCT05	05DEC05	39					
BI00000670	Data Decommuration & Storage	44	0	03OCT05	05DEC05	39					
BI00000680	Data Distribution	44	0	03OCT05	05DEC05	39					
BI00000690	Data Quality Monitoring	44	0	03OCT05	05DEC05	39					
BI00000700	Data Acquisition S/W Development Release 1	0	0		05DEC05	39					
<b>4.1.B.4.3 OPERATIONS S/W DEVELOPMENT</b>											
BI00000730	Instrument Monitoring	40	0	03OCT05	29NOV05	29					
BI00000740	Command Interface	40	0	03OCT05	29NOV05	29					
BI00000800	Operations S/W Development Release 1	0	0		29NOV05	29					
<b>4.1.B.4.4 COMMAND &amp; TELEMETRY DEVELOPMENT</b>											
BI44L40000	Tower A/B Database Release	0	0		30SEP05	-165					
<b>4.1.B.4.5 IOC SYSTEM DEVELOPMENT</b>											
<b>4.1.B.4.5.1 DEVELOPMENT MODEL (1st SET OF HW)</b>											
BI00000900	Develop Procurement Specification (1st set)	30	92	03MAY04A	11NOV05	-52					
BI451PR000	(PR) 1st set Hardware & Software	1	0	03OCT05	03OCT05	-42					
BI00000910	(REC) Servers (1st set)	1	0	28OCT05	28OCT05	-42					
BI00000920	(REC) Workstations (1st set)	1	0	28OCT05	28OCT05	-42					
BI00000930	(REC) Peripherals (1st set)	1	0	28OCT05	28OCT05	-42					
BI00000940	(REC) COTS Software (1st set)	1	0	28OCT05	28OCT05	-42					
BI00000950	(REC) Network Hardware (1st set)	1	0	28OCT05	28OCT05	-42					
<b>4.1.B.4.5.2 OPERATIONAL MODEL UPGRADE (2nd SET OF HW)</b>											
BI00001000	Develop Procurement Specification (2nd set)	20	0	03OCT05	28OCT05	221					
BI452PR000	(PR) 2nd set Hardware & Software	1	0	31OCT05	31OCT05	221					
<b>4.1.B.5 IOC TEST</b>											
<b>4.1.B.5.2 TEST DEVELOPMENT</b>											
BI00001100	(REC) Test Equipment	1	0	03OCT05	03OCT05	-58					
<b>4.1.B.5.4 IOC INTERFACE TESTS</b>											
BI54M00000	IOC I/F Initial Test Complete	0	0		12DEC05	517					

Activity ID	Activity Description	Orig Dur	% Comp	Early Start	Early Finish	Total Float	FY05				FY06						
							SEP	OCT	NOV	DEC	SEP	OCT	NOV	DEC			
4.1.B.5.4.1 IOC/SAS INTERFACE TESTS																	
BI00001151	IOC/SAS I/F Initial Test	5	0	06DEC05	12DEC05	507											
4.1.B.5.4.2 IOC/MOC INTERFACE TEST																	
BI00001181	IOC/MOC I/F Initial Test	5	0	06DEC05	12DEC05	507											
4.1.B.5.4.3 IOC/SSC INTERFACE TESTS																	
BI00001186	IOC/SSC I/F Initial Test	5	0	06DEC05	12DEC05	507											
4.1.B.6 LAT PERFORMANCE VERIFICATION																	
4.1.B.6.1 PERFORMANCE VERIFICATION TESTING																	
BI61000010	Develop Test Procedures	248	100	01JUL03A	03OCT05	-313											
BI61000031	Collect & Process Test Data (comm)	39	0	03OCT05	28NOV05	527											
BI61000041	Perform Data Analysis (comm)	39	0	03OCT05	28NOV05	527											
4.1.B.6.5 LAT TESTBED SUPPORT																	
BI65000010	Develop Testbed Procedures	269	100	02JUN03A	03OCT05	565											
BI65000021	Receive Testbed	0	0		03OCT05	-58											
BI65000020	Collect & Process Testbed Data	0*	0	04OCT05	03OCT05	565											
BI65000030	Maintain Testbed	2	0	04OCT05	05OCT05	-58											
4.1.B.7 LAT INTEGRATION & TEST																	
4.1.B.7.1 QUALIFICATION UNIT TEST SUPPORT																	
4.1.B.7.1.1 FUNCTIONAL TESTS																	
BI00001330	Functional Test Modules A/B	15	0	03OCT05	21OCT05	493											
BI00001340	Functional Test Modules 1/2	15	0	24OCT05	11NOV05	536											
4.1.B.7.2 FLIGHT UNIT TEST SUPPORT																	
BI72M00000	ND: LAT EMI/EMC Test from I&T to IOC	0	0		30SEP05	501											
BI72M10000	ND: LAT Vib/Acoustic Test from I&T to IOC	0	0		30SEP05	511											
BI72M20000	ND: LAT Thermal Test from I&T to IOC	0	0		30SEP05	531											
BI72M30000	ND: LAT Performance Test from I&T to IOC	0	0		30SEP05	556											

Activity ID	Activity Description	Orig Dur	% Comp	Early Start	Early Finish	Total Float	FY05		FY06		
							SEP	OCT	NOV	DEC	
4.1.C EDUCATION AND PUBLIC OUTREACH											
4.1.C.4 EDUCATOR TRAINING											
4.1.C.4.2 NSTA											
CE400RB215	NSTA 12/05	5*	0	05DEC05*	09DEC05	518	95	12:19:26.3	10:17:24.317	14:21:28.5	12:19:26

NSTA 12/05 

Activity ID	Activity Description	Orig Dur	% Comp	Early Start	Early Finish	Total Float	FY05		FY06	
							SEP	OCT	NOV	DEC
4.1.D SCIENCE ANALYSIS SOFTWARE										
4.1.D.4 SCIENCE SOFTWARE										
4.1.D.4.2 ANALYSIS SOFTWARE										
DS6MFC0210	Analysis Software support (FY 06)	36*	0	03OCT05	21NOV05	114				
4.1.D.7 MANAGEMENT										
4.1.D.7.1 SCIENCE ANALYSIS SOFTWARE MANAGEMENT										
DS213050	LAT I&T & Beam Tests	0	0		17NOV05*	532				

Analysis Soft

LAT I&T & Beam Tests