

# System Tests

Still waiting for response from Tracker and Cal groups to “bless” the changes in ToT and Cal ADC in v6r7 as being ok.

- It would be helpful to find a cal and tkr person who would be responsible for verifying systest output.

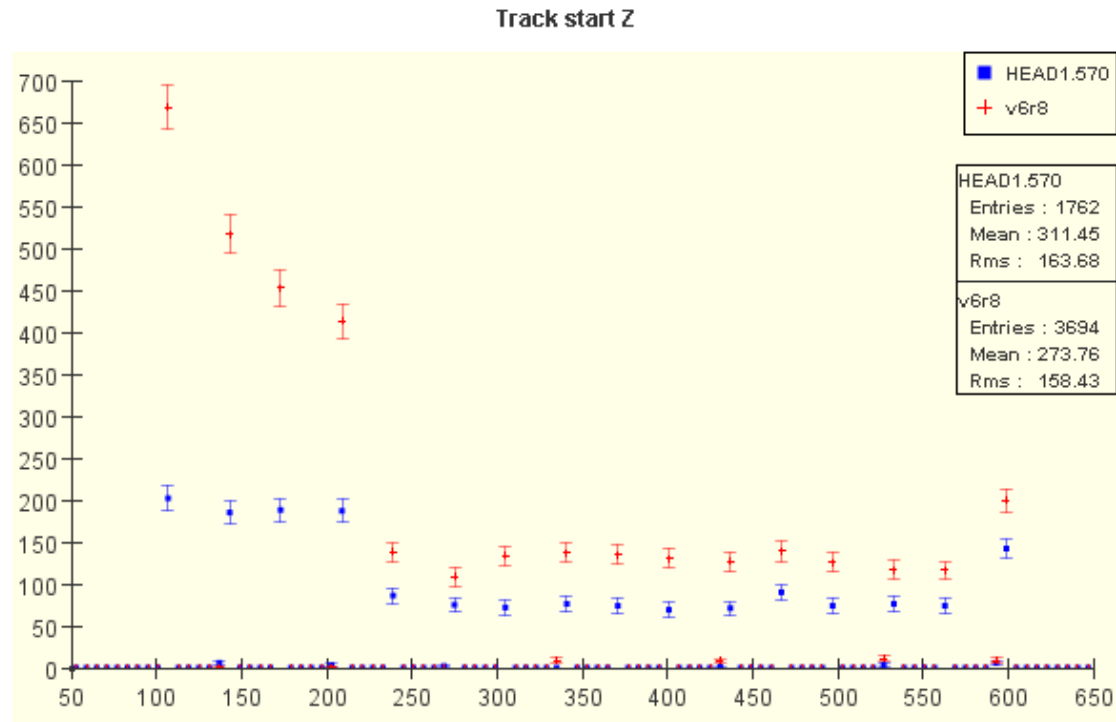
One new tagged release of GlastRelease (v6r9) since the last systest report.

TkrRecon v10r5p7 -> v10r6p3

CalDigi v2r1p2 -> v2r2

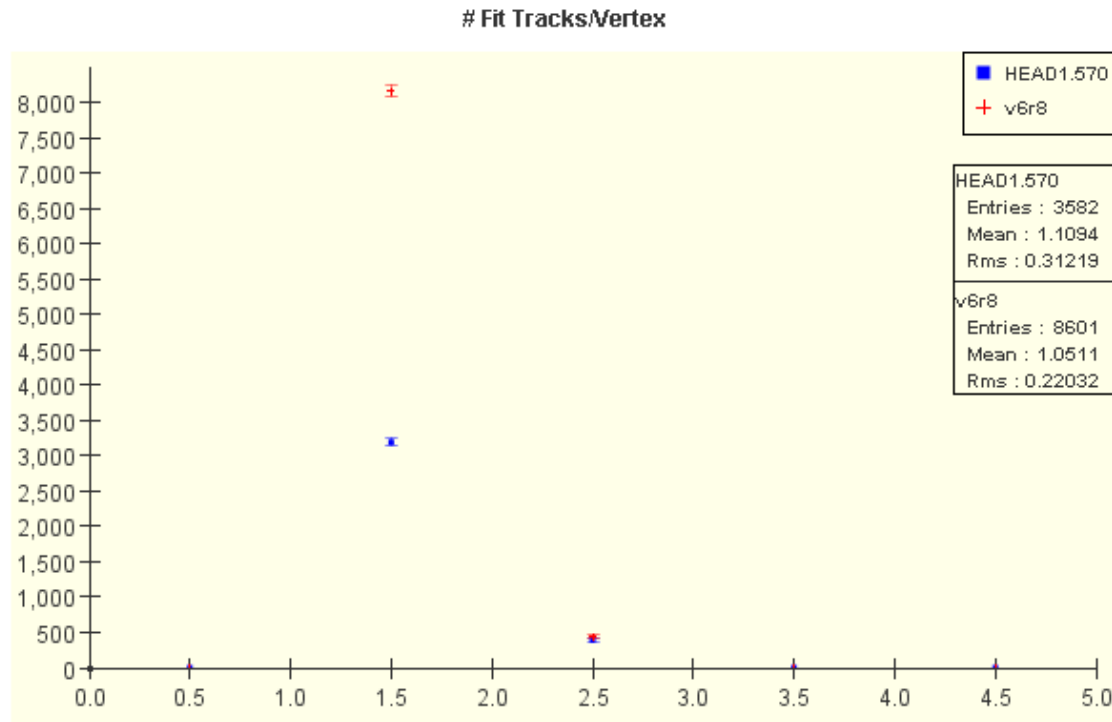
- There is a bug in the version of CalDigi used in v6r9 – Do not use this release.

# Systests for v6r9



Fewer tracks in v6r9 compared to v6r8.

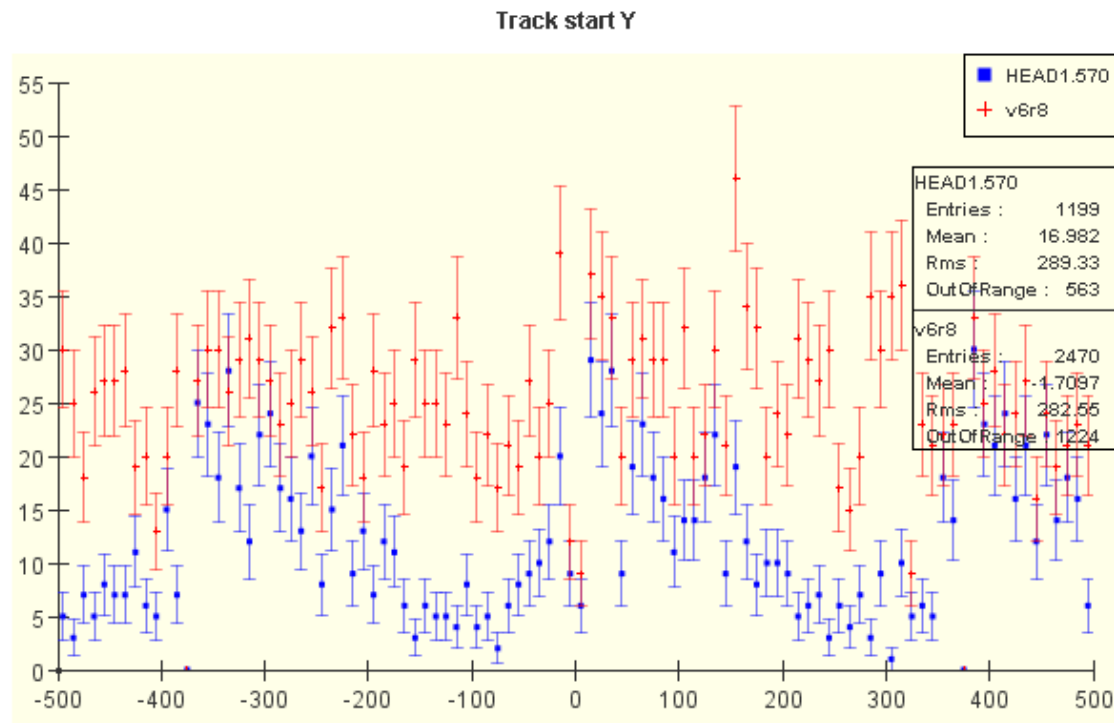
# Num Vertices



Many fewer vertices in v6r9, more often have only one track per vertex.

# starty

VerticalGamma100 GeV

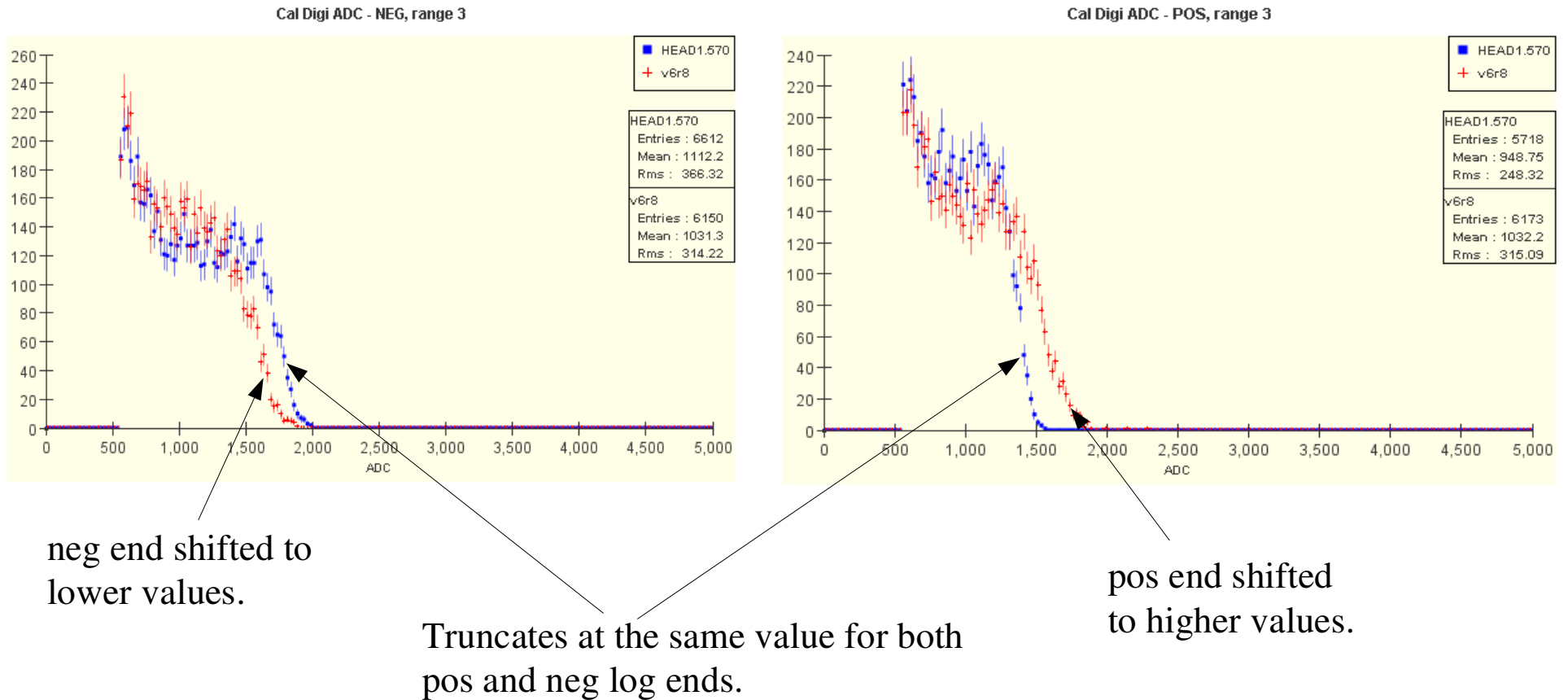


This is the distribution of `trkParams.getYPosition()` for the first two tracks in each event, where:

```
TkrTrackParams trkParams = trackHit->getTrackParams(TkrTrackHit::SMOOTHED);
```

What are the units, mm?

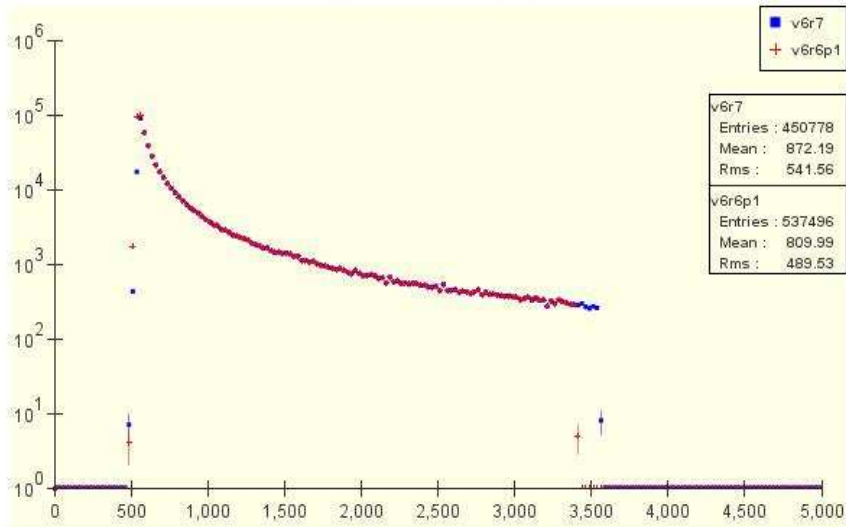
# Cal ADC



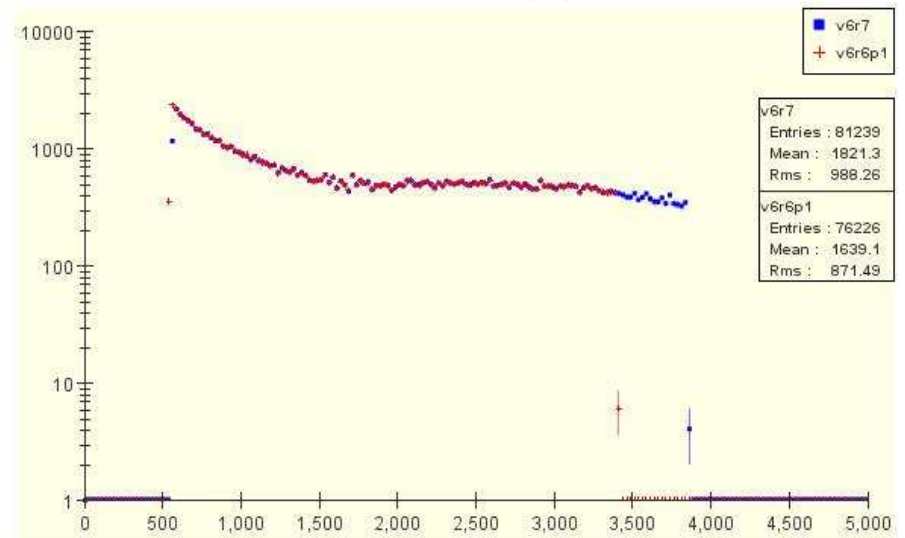
A bug has been found (and fixed) which likely caused this behaviour.

# CalDigi

Cal Digi ADC - both faces, range 0

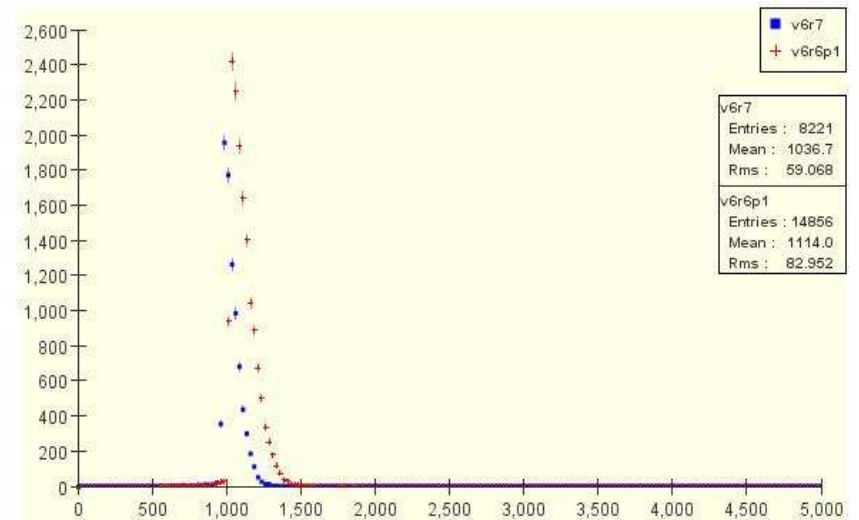


Cal Digi ADC - both faces, range 1



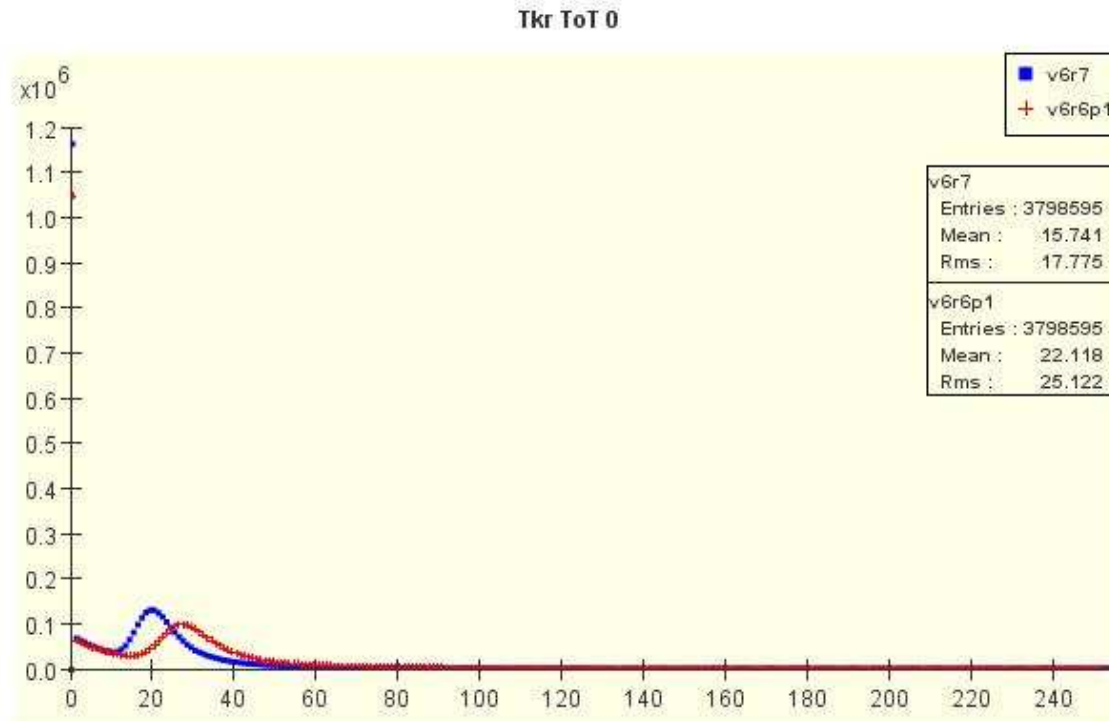
Change in default flight calibration?

Cal Digi ADC - both faces, range 2



# ToT

Vertical Muon 1 GeV



Change in default Tkr calibration?