



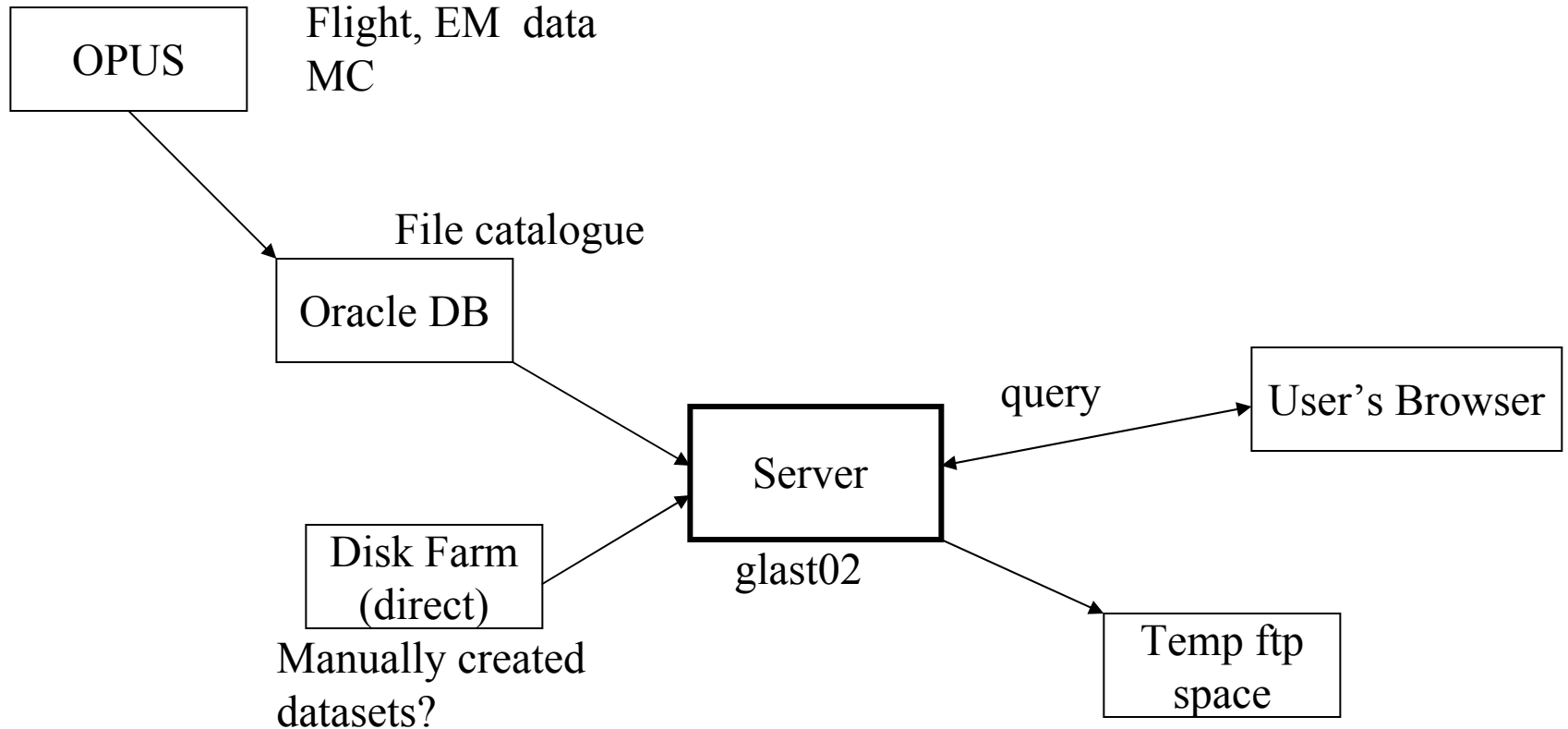
# LAT Data Server Overview

---

- **Server's Purpose**
  - deliver all LAT ground event data to collaborators
    - not only FITS files
    - MC
    - EM/Integration data
    - Flight data
  - Perhaps act as US West Coast portal for FITS data access (if needed)
- **Desirements**
  - Hooked up to dataset catalogue (as generated by OPUS)
    - Full list of all “tasks” and their constituent datasets
    - Provide task selection to users
  - Perhaps access to manually generated files
  - Access to all farms' data?
  - ftp access to
    - ntuples
    - Full MC/Digi/Recon trees
    - FT1, FT2
  - Event display server?
  - Not slow as mud



# Server Diagram





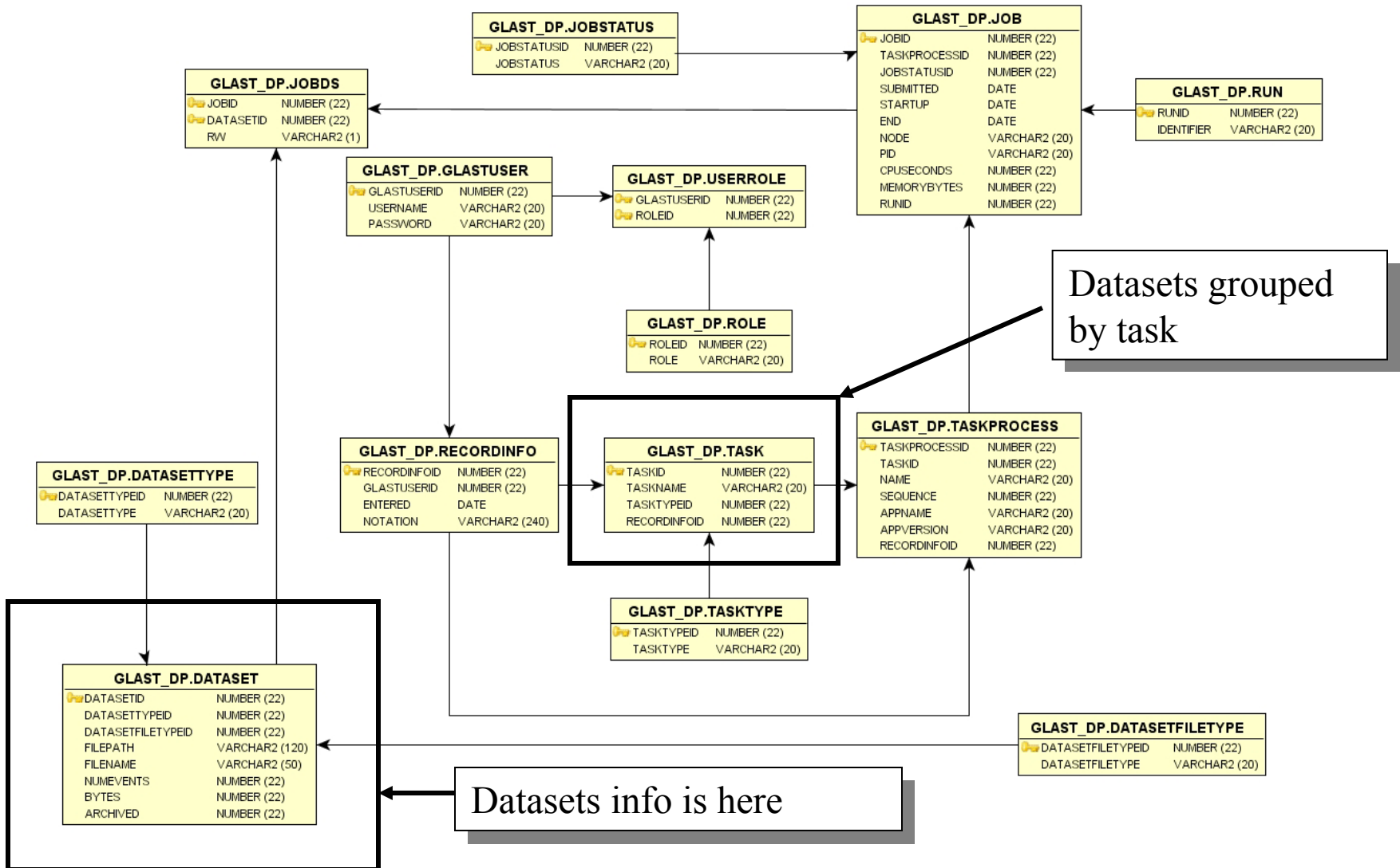
# Event Sources

---

- **Merit ntuple used as primary source**
  - All indexed by Run/Event (for now)
  - FT1 is subset
- **Apply selections to 200+ columns of Merit and generate output**
  - new ntuple
  - FT1
  - find appropriate events in trees (currently - looks through the trees, not tuple)
    - Use RootIO random access to speed this up
- **From all Farms?**
  - Three farms at the moment: Lyon, Perugia (coming up) & SLAC
    - ntuples transferred to SLAC disk
    - Hand-ftp needed tree files for “peeling” as requested
  - Possible to have server access to all farms “locally”?
    - Knows where all files are and goes to the source...
    - xrootd?
    - GRID??



# Processing Dataset Catalogue





# Misc

---

- **Event Display server**
  - **Seems a similar technology**
  - **Work with FRED to supply events?**
- **Customizable?**
  - **It was handy being able to set up rules for DC1**
    - **Not delivering MC, for example**
- **Possible speed options**
  - **Index files with Run/Event; use conditional branches**
  - **Custom macros for pruning (don't rely on TTree::Draw)**
  - **PROOF (parallel Root queries)?**