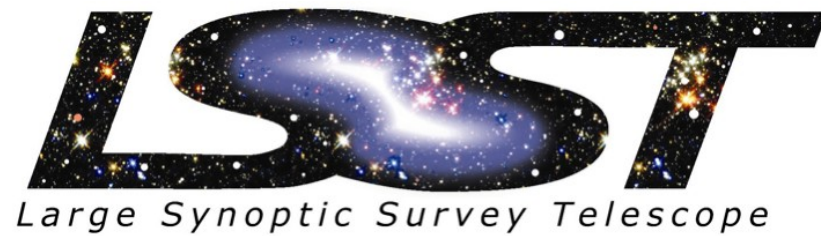


Camera Workshop

16-19 September 2008



K. Fouts, K. Gilmore



Emergency Information

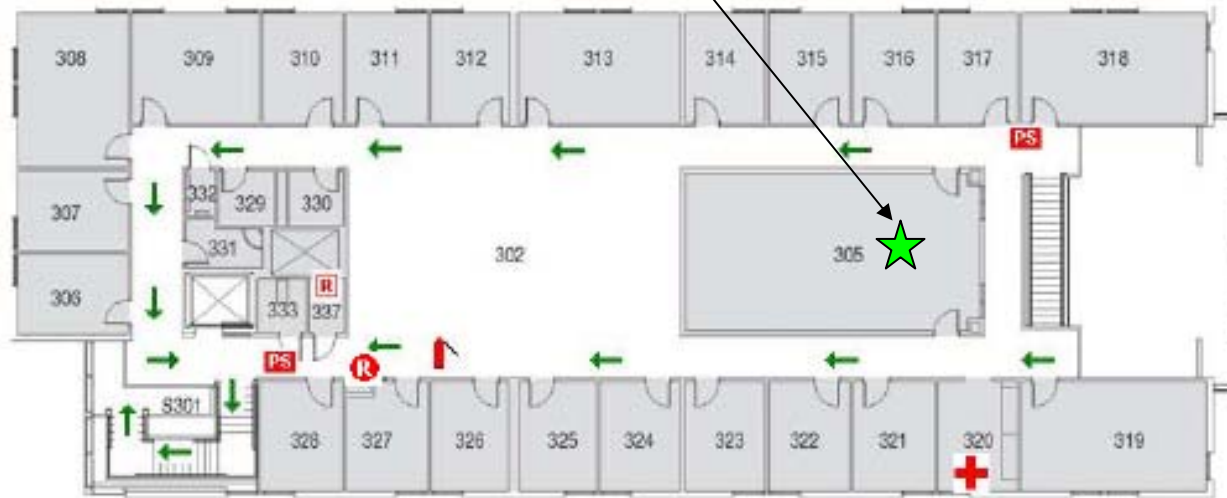
- Be aware of exits in your building
 - Speaker will indicate locations for this meeting
- Fire or other emergency evacuation
 - Follow building residents out of building to the assembly area
- Earthquake
 - Remain in building: Duck, cover, and hold position until shaking stops
 - Evacuate building to assembly area outside (follow others)
 - Stay away from windows, downed power lines
- In the event of an emergency
 - Dial 9-911 from a SLAC phone; or
 - Dial 911 from your cellular phone
 - Provide SLAC address (2575 Sand Hill Road, Menlo Park, CA; cross street Saga Lane) and your building/room number.

Building Emergency Information



Bldg 51, 3rd Floor

You are here

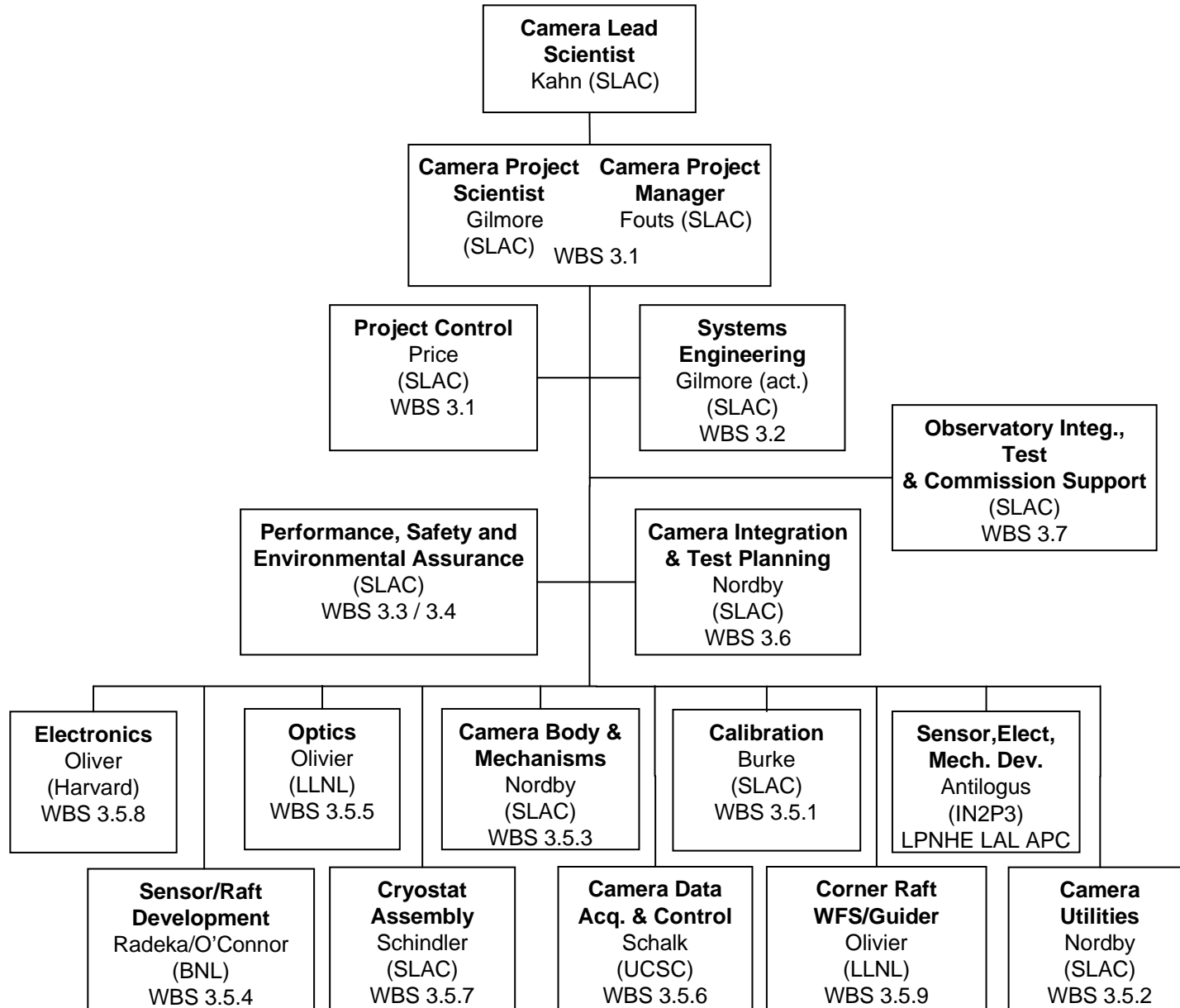


Dial 9-911 For Emergency



Emergency assembly point

Camera Organizational Chart



Workshop Agenda (1 of 2)

Tuesday, September 16.

Kavli Building, 3rd Floor Conference Room

1. Welcome and Introduction (K. Fouts/K. Gilmore)	8-8:15am
<i>Subsystem Presentations</i>	
2. Electronics (J. Oliver/R. Van Berg)	8:15-10am
3. Sensor/Raft (P. O'Conner/C. Butehorn)	10-12pm
Lunch	12-1pm
4. Optics/Filters (K. Gilmore)	1-2pm
5. Camera Body and Mechanisms (M. Nordby)	2-3pm
6. Calibration (D. Burke et al)	3-5pm

Wednesday, September 17

Kavli Building, 3rd Floor Conference Room

1. Camera System Electronics (R. Van Berg)	8-9am
2. Camera Control System Support for I&T (T. Schalk)	9-10am
3. Data flow (T. Schalk, et al)	10-11am
Open	11-12 am
Lunch	12-1pm
Cryostat Presentation	1-5pm
4. Raft-Grid Interface and Metrology (P. O'Connor, A. Rasmussen)	
5. Cryostat Electrical Integration (R. Van Berg, J. Oliver)	
6. Contamination Control in Cryostat (P. O'Connor, Kirk Arndt , R. Schindler)	

Workshop Agenda (2 of 2)

Thursday, September 18

<u>SLUO Meeting</u> , Kavli Auditorium	8-6:30pm
<i>Tour of Contamination Test Chambers On-campus</i>	2-4pm

Friday, September 19

Kavli Building, 3rd Floor Conference Room

<i>1. Corner Raft Presentation (S. Olivier/K. Arndt)</i>	8-10am
<i>2. Image Quality and Camera Requirements (K. Gilmore)</i>	10-11am
<i>3. Plan for Internal Review (K. Gilmore)</i>	11-12pm
<i>Lunch</i>	12-1pm
<i>4. PDR/CD-1 Plan (K. Fouts)</i>	1-2pm