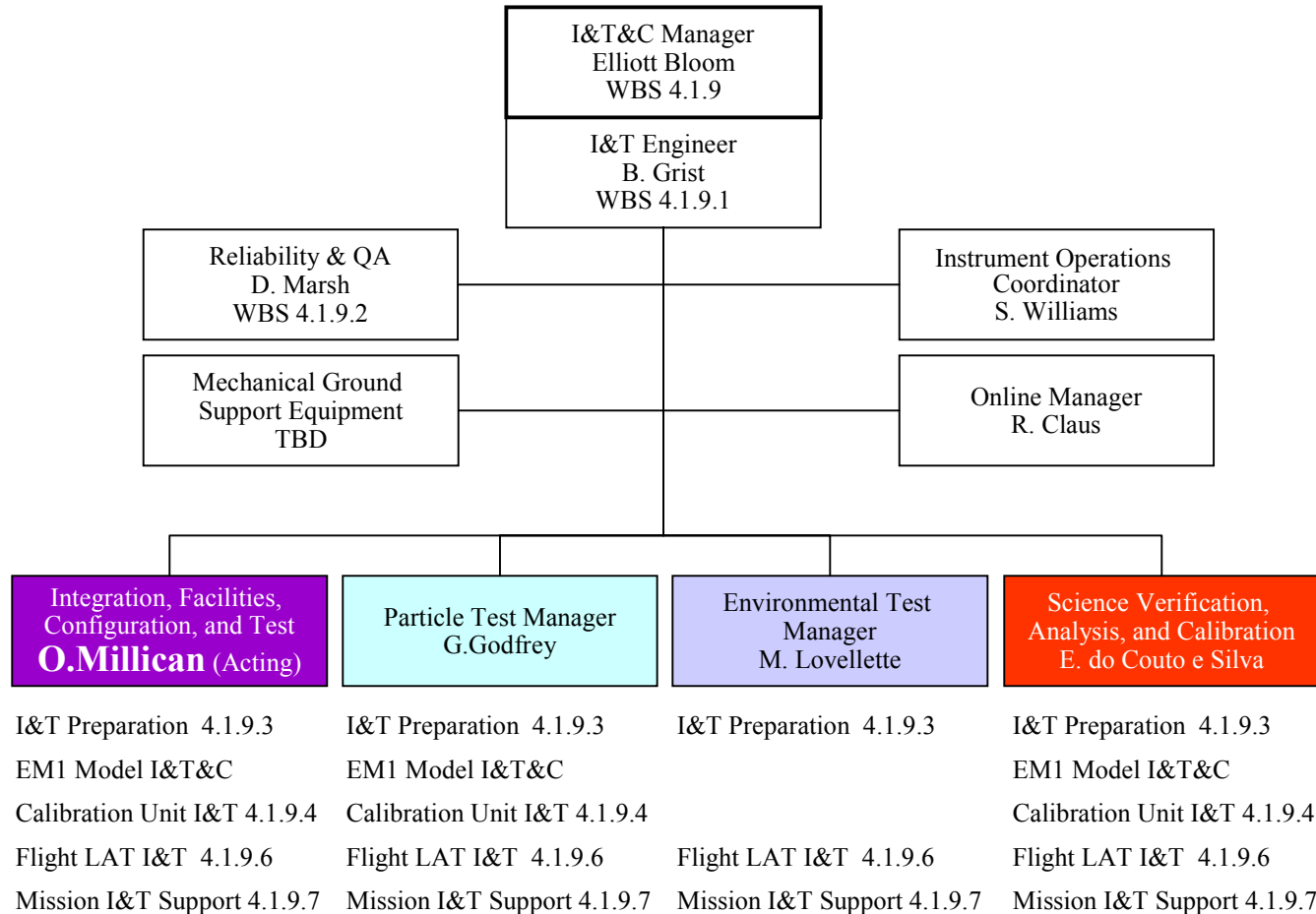
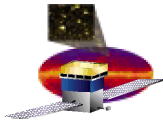


# I&T&C Organization Chart

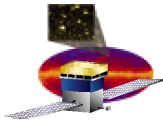




# Integration

---

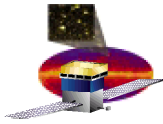
- **Contamination control plan**
- **Material control**
  - **Travelers**
  - **Database – MS Access – Export to Oracle**
  - **Security – Signature controlled custodian/travelers**
  - **Training**
  - **Coordination with subsystem teams**
- **Flight hardware**
  - **Receiving/Storage**
  - **Staging**
  - **Spares**



# Integration

---

- **Training/certifications**
  - **NASA**
  - **SLAC**
  - **OSHA**
  - **Test device calibration**
- **Compliance issues**
  - **Flight hardware**
  - **Environment sensitive components**
- **Perform integration**



# Facilities

---

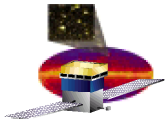
- **Contamination Control Plan**

- **Protocols**

- **Cleanroom operations**
    - **Gowning**
    - **Workmanship standards**
    - **Facility maintenance**

- **Integration Procedures**

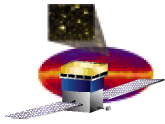
- **Flight hardware handled by qualified, certified personnel**
  - **Procedures prototyped, tested and implemented**
  - **NCR/ECR - originate/resolve/record**
  - **Metrology support**
  - **Coordinate requirements of subsystem teams in SLAC Facility**



# Mechanical Ground Support Equipment

---

- **Mechanical Ground Support Equipment (MGSE)**
  - **LAT Assembly**
  - **Shipping**
  - **Vibration Mount**
  - **Thermal Vacuum Mount**
  - **Rigging/Lifting fixtures**
  - **Provide design support for GSE**
  - **Originate operating procedures for GSE**
  - **Maintain/Inspect/Store GSE**



# Configuration

---

## ▪Configure tests

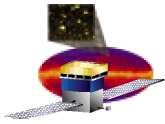
- Flight hardware handled by certified personnel
- Maintain consistent handling standards
- Maintain chronology of component handling

## ▪Logistics

- Packaging/Shipping
- Coordination with test facility
- Utilize consistent handling/rigging standards
- Maintain chronology of component handling

## ▪Setup

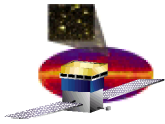
- Support effort expected from subsystem members
- Interface to subsystems in development of techniques/procedures



# Tests

---

- **Performance**
  - **Functional**
  - **EMI**
  - **Cosmic ray**
  - **Particle**
- **Environmental**
  - **Vibration**
  - **Thermal/vacuum**



# Resources

---

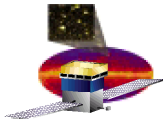
## Schedule

- Master Project Schedule
- Changes to schedule from added tasks TBD

## Personnel

- Integration/Test Engineer
- Mechanical/Electronic Technicians
- Design
- Administrative/Clerical
- Support effort expected from subsystems



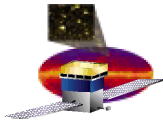


# Cost Estimate

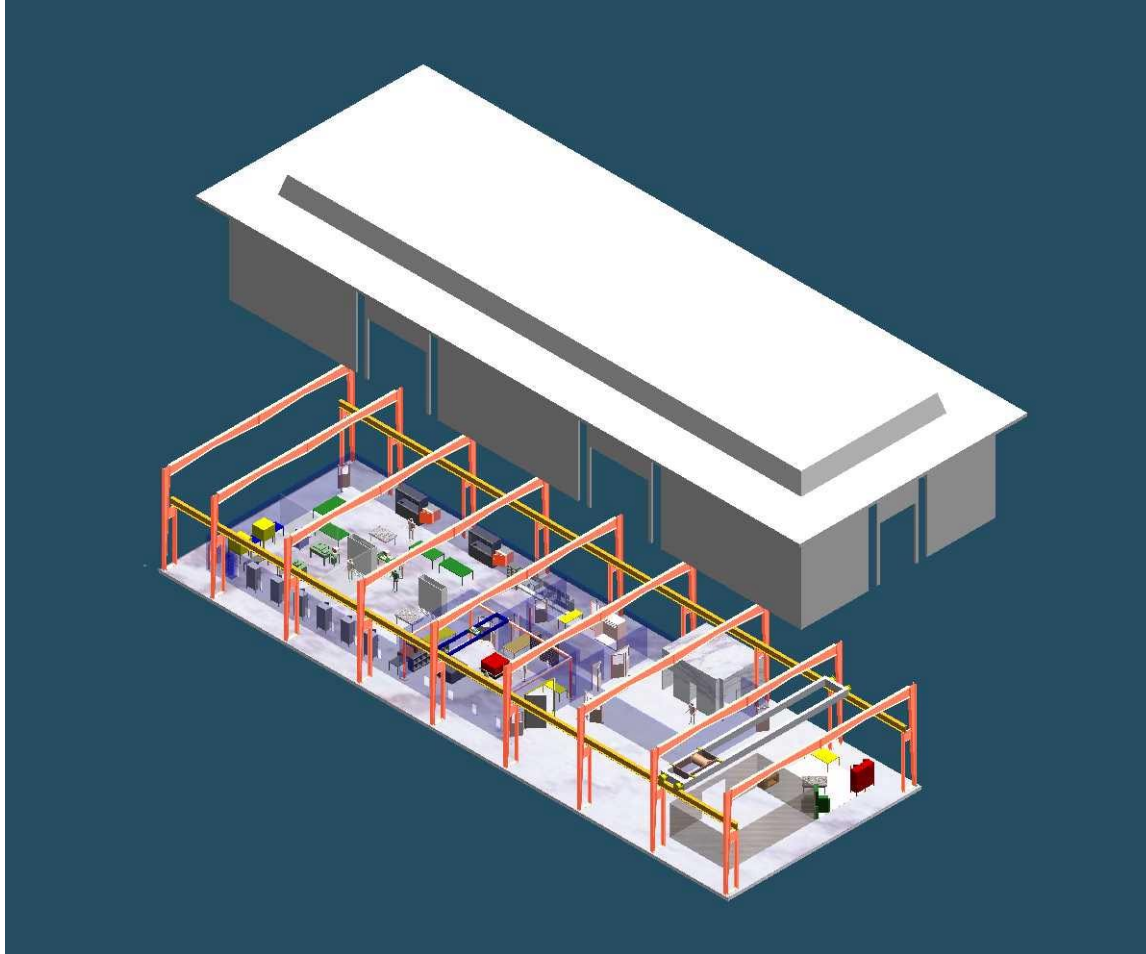
---

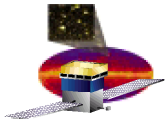
## Cost Estimate

- Many tasks with no cost estimate
- Additional tasks, not yet reflected in cost estimate (Airplane test, Van de Graf)
- Subject to arrangements made with subsystem managers for manpower support at collaborator/contractor's facility
- Affected by shift work

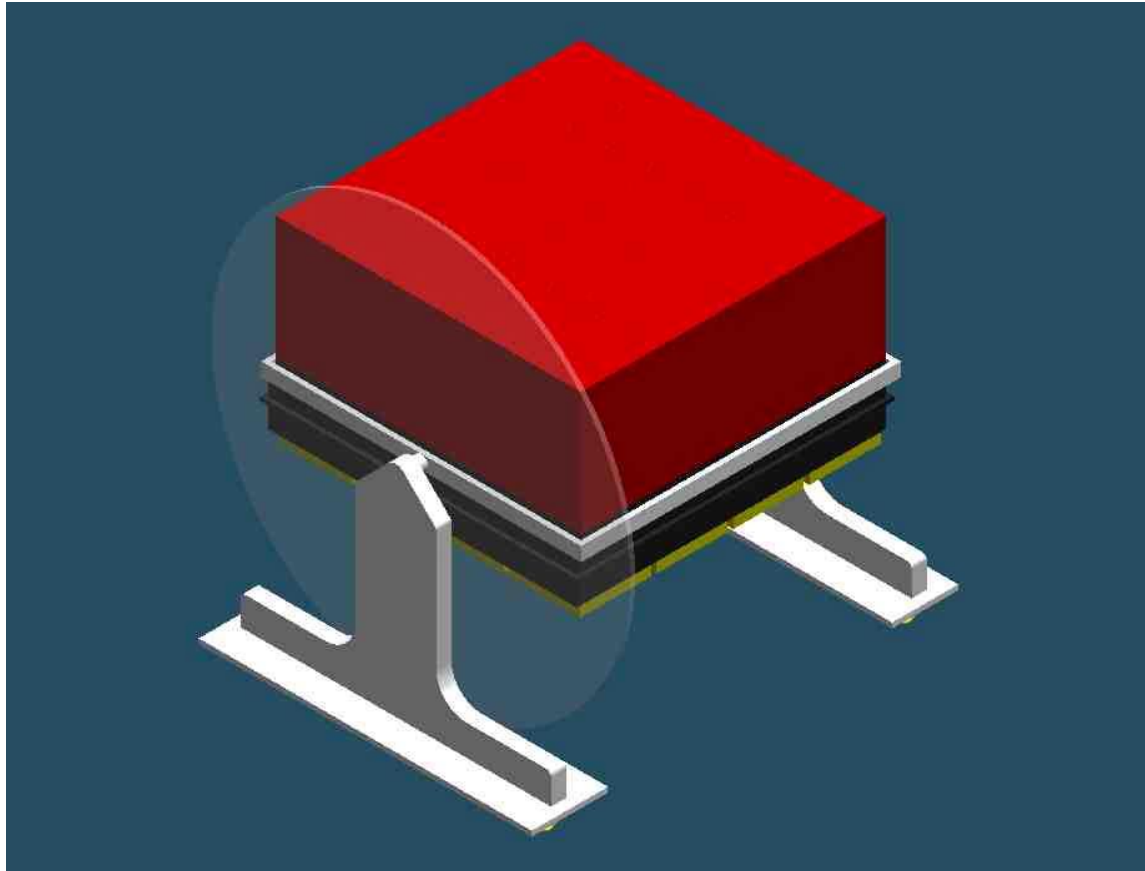


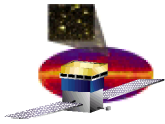
## GLAST Integration Area – Building 33 SLAC



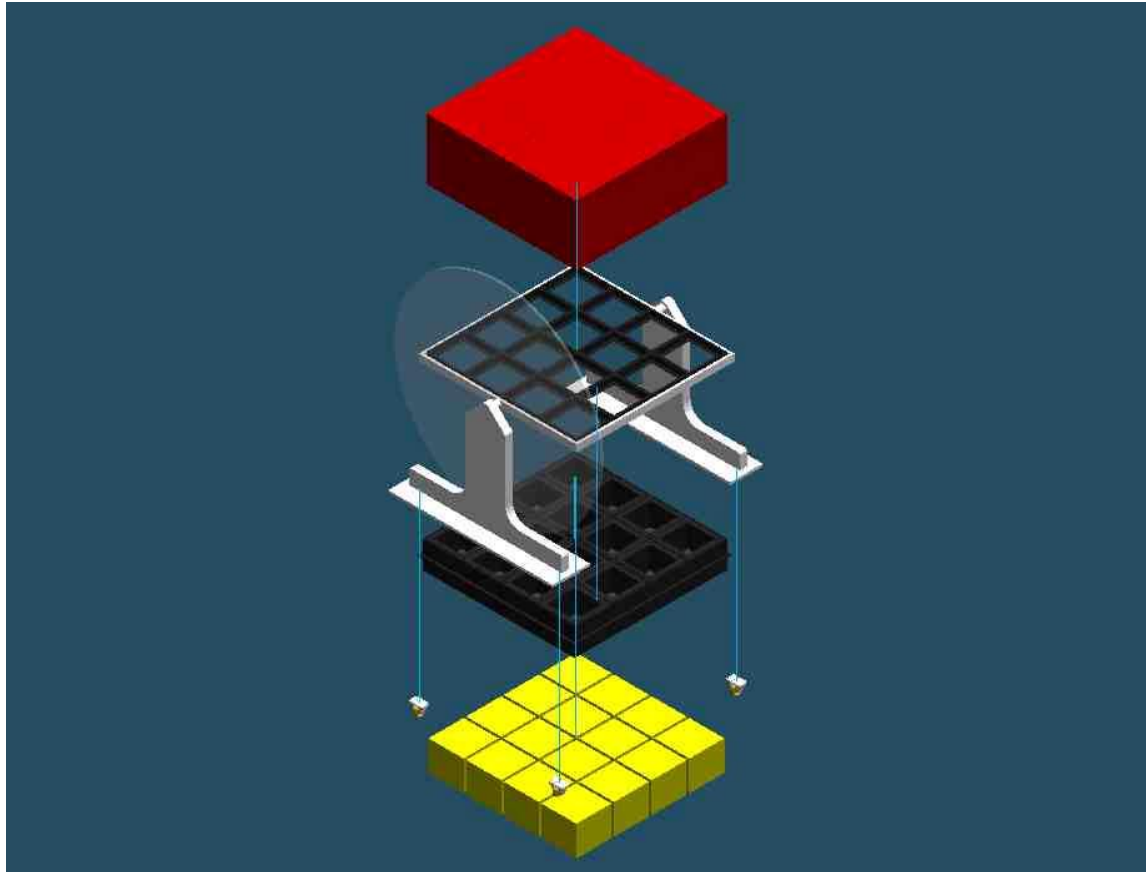


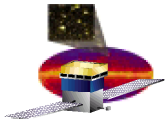
## Concept Drawing – LAT Integration Fixture



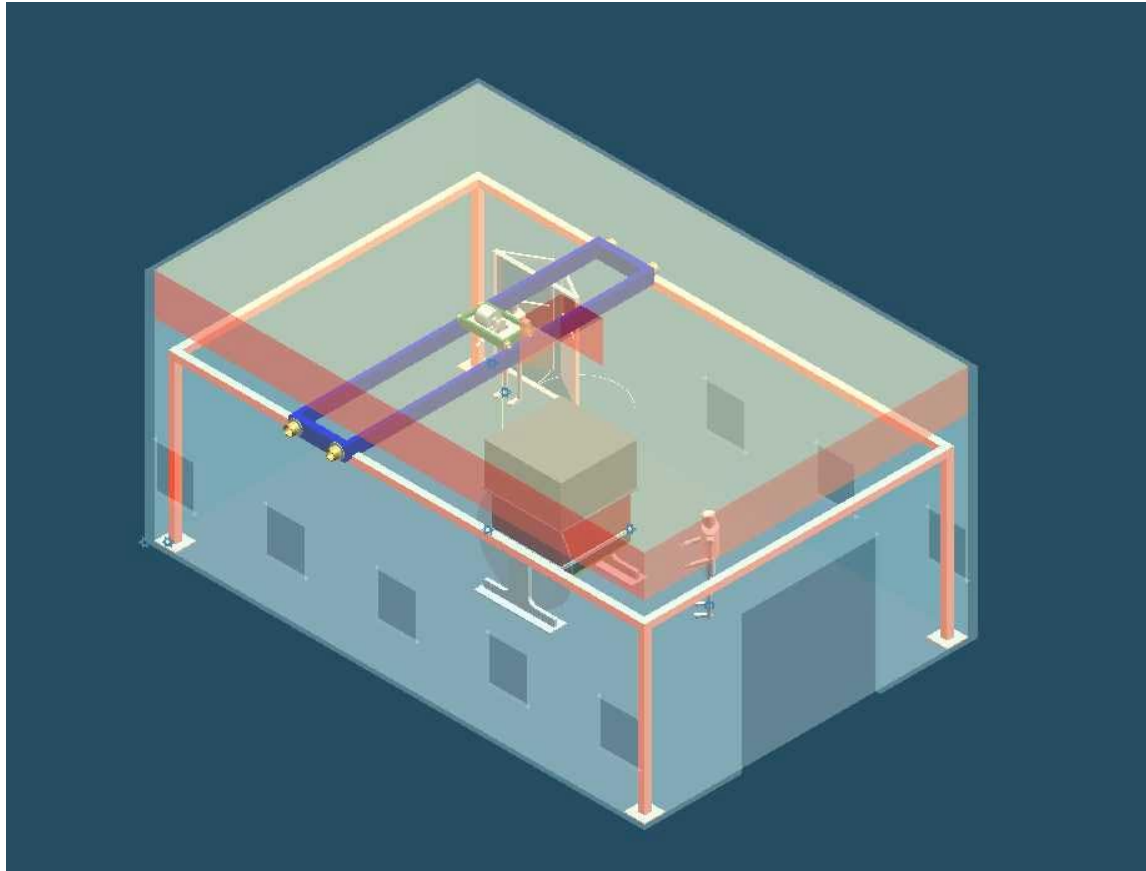


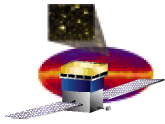
## Concept Drawing – LAT Integration Fixture





## ISO View - High Bay – Integration Area (from MGSE handling study)





## Side View - High Bay – Integration Area (from MGSE handling study)

