

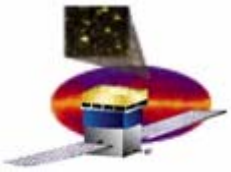
Monthly Mission Review

LAT I&T Status

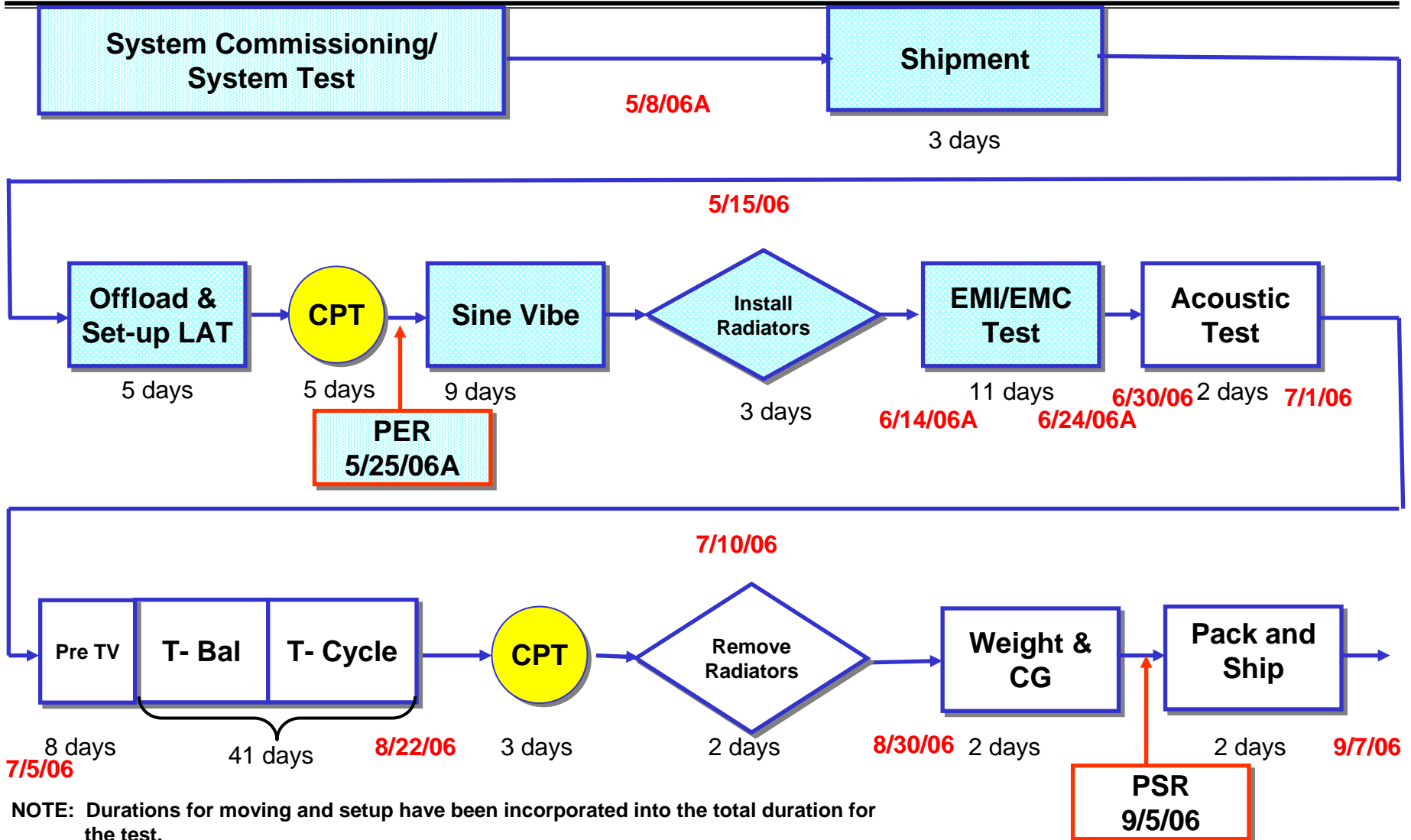
June 29, 2006

**Ken Fouts
SLAC**

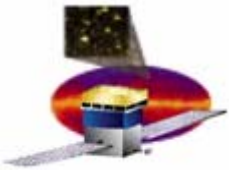
**kfouts@slac.stanford.edu
925-413-9161**



LAT Test Flow



NOTE: Durations for moving and setup have been incorporated into the total duration for the test.



LAT I&T Plan Summary

Activity

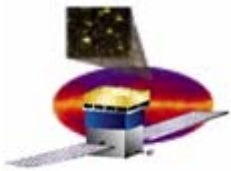
- Install MLI
- Route ext. TVAC cables
- Acoustic Test
- Post Acoustic LPT
- Install TVAC T/C's
- Load PBC
- LAT 15x
- Rotate LAT and test stand
- Relocate EGSE
- Install LAT on TVAC dolly
- Move into TVAC chamber
- Route TVAC cables
- Complete Open door tests
- Close the door
- Transition to ambient

ECD

6/29/06
7/1/06
7/1/06
7/2/06
7/5/06
7/7/06
7/8/06
7/9/06
7/9/06
7/10/06
7/10/06
7/12/06
7/15/06
7/15/06
8/23/06

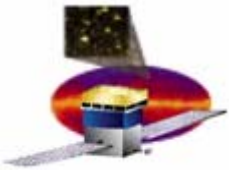


LAT return from EMI test



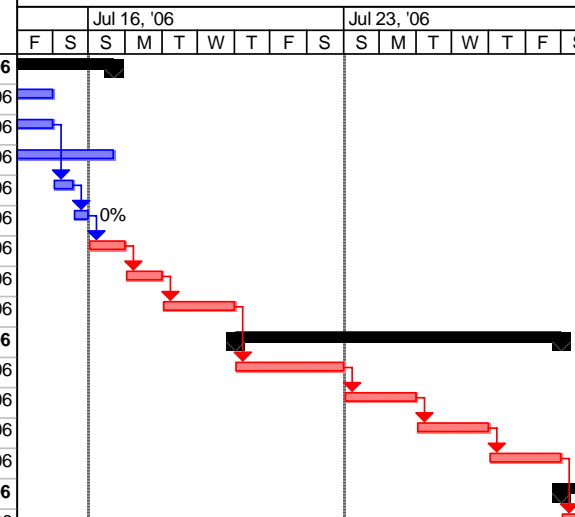
Detailed Plan (1 of 3)

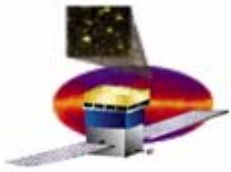
ID	Task Name	Start	Finish	Jun 25, '06							Jul 2, '06							Jul 9, '06						
				S	M	T	W	T	F	S	S	M	T	W	T	F	S	S	M	T	W	T	F	S
1	Environmental Test	5/11/06	9/6/06																					
46	EMI/EMC Test	6/8/06	6/30/06																					
63	LAT 15x	6/26/06	6/27/06																					
64	LAT 16x (LTC)	6/27/06	6/27/06																					
65	LAT 52x (light tight)	6/27/06	6/27/06																					
66	LAT Survey (locate radiators)	6/28/06	6/28/06																					
67	Complete blanket Installation	6/29/06	6/30/06																					
70	Acoustic Test Readiness Review (TRR)	6/28/06	6/28/06																					
71	Acoustic Test	6/30/06	7/1/06																					
72	Low Level run at -6db for 30 sec (establish pre-test signature, review data)	6/30/06	6/30/06																					
73	Full Level run at -0dB for 60 seconds	6/30/06	6/30/06																					
74	Low Level run at -6dB for 30 sec (signature check, review data, complete axis)	7/1/06	7/1/06																					
75	Return to clean tent	7/1/06	7/1/06																					
76	Run LPT	7/1/06	7/1/06																					
77	TVAC	6/22/06	9/6/06																					
78	TVAC Prep/Check-out	6/22/06	7/14/06																					
79	route EGSE cables in & outside of chamber	6/29/06	6/30/06																					
80	TC cable to external wall	6/26/06	6/27/06																					
81	PWR cables to ext wall	6/26/06	6/27/06																					
82	Configure CDACS system	6/22/06	7/9/06																					
83	Load boot code + regression test	7/6/06	7/7/06																					
84	TVAC Test Readiness Review (TRR)	7/6/06	7/6/06																					
85	Partially remove LAT MLI	7/5/06	7/5/06																					
86	Install ~90 LAT, test stand, STE TC's	7/5/06	7/6/06																					
87	Sw ap Radiator struts	7/5/06	7/5/06																					
88	Remove Acoustic test plate	7/5/06	7/5/06																					
89	Mount Inclinometers	7/5/06	7/5/06																					
90	Map LAT flt temp sensors (LAT Pwr ON)	7/7/06	7/8/06																					



Detailed Plan (3 of 3)

ID	Task Name	Start	Finish	Jul 16, '06							Jul 23, '06								
				F	S	S	M	T	W	T	F	S	S	M	T	W	T	F	
118	TVAC Open Door Test	7/14/06	7/16/06																
119	checkout & repair GSE heaters	7/14/06	7/15/06																
120	checkout & repair TC's-end to end	7/14/06	7/15/06																
121	LAT LPT	7/14/06	7/16/06																
122	Tape MLI blankets	7/15/06	7/15/06																
123	Chamber pump down	7/15/06	7/15/06																
124	Pre-bake	7/16/06	7/16/06																
125	Bake-out	7/17/06	7/17/06																
126	Hot Operational thermal balance	7/18/06	7/19/06																
127	Hot Operational TCS Testing	7/20/06	7/28/06																
128	RIT Control w ith Primary reservoir heaters & Symmetric Orbit Average Load	7/20/06	7/22/06																
129	Peak Power Testing	7/23/06	7/24/06																
130	RIT Control w ith Redundant Reservoir Heaters & Transient Loadin	7/25/06	7/26/06																
131	Hot performance Testing (PFQ) and Hot Turn On/Off/On	7/27/06	7/28/06																
132	Cold Operational TCS testing	7/29/06	8/6/06																
133	Cold survival thermal balance and radiator/grid heater functioning	7/29/06	7/30/06																
134	Cold performance Testing (PFQ) and Cold Turn On	7/31/06	8/1/06																
135	Cold Operational Thermal balance	8/2/06	8/3/06																
136	RIT Control w ith Primary reservoir Heaters and Symmetric Orbit Average Load	8/4/06	8/4/06																
137	RIT Control w ith Redundant reservoir Heaters and Symmetric Orbit Average Load	8/5/06	8/5/06																
138	TCS Parameter Uploads	8/6/06	8/6/06																
139	Thermal Cycling	8/7/06	8/12/06																
140	Final Hot CPT	8/13/06	8/17/06																
141	Final Cold CPT	8/18/06	8/22/06																
142	Transition to Ambient	8/23/06	8/23/06																
143	Final CPT	8/24/06	8/28/06																
144	Remove Radiators	8/29/06	8/30/06																
145	Weight & CG	8/31/06	9/1/06																
146	Instrument Check	8/31/06	8/31/06																
147	Align LAT on Test Platform	8/31/06	8/31/06																
148	Measure overall Mass & cg	8/31/06	9/1/06																
149	Rotate LAT 180 degrees and align to test platform	9/1/06	9/1/06																
150	Measure overall mass & cg	9/1/06	9/1/06																
151	Pack and Ship	9/4/06	9/6/06																





Lessons Learned

- ❑ **Do complete a formal walk around prior to start of every test.**
- ❑ **Do be careful when removing notches from sine wave test runs.**
- ❑ **Do have a backup chiller and lots of spare parts.**
- ❑ **Do travel on Jet Blue if you have the chance.**
- ❑ **Don't let the kinks get you down when you think you're at the end of your wire rope.**
- ❑ **Don't park on the lower level at the Marriot Courtyard in Alexandria.**
- ❑ **Don't whine. Do something about it.**