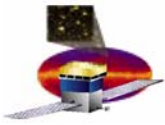


# GLAST Large Area Telescope

**WBS 4.1.D SAS  
GSFC Monthly Review**

**Period Ending: June 2004**

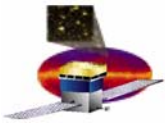
**Richard Dubois  
LAT SAS Subsystem Manager**



# May/June Accomplishments

---

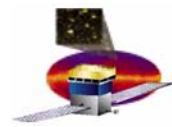
- **Flight Integration Support**
  - **A main focus!**
  - **Preparing stable version of sim/recon**
    - **Back versions of packages for stability**
  - **Migrate to new version of LAT Data Format data and library from Online**
  - **Calibrations user interface about to be foisted on first users**
  - **FRED Event display now available**
    - **In process of building it into the system**
  - **Lots of work on pipeline – more later.**
- **Instituted Issue Tracking System - JIRA**
  - **Reworking our modus operandi to use this tool for bugs, improvements and feature requests**
  - **Very pleased so far!**
- **New gui for code build tools pretty much wrung out**
  - **Same tool on windows and linux**
- **Automated code and external binary distributions almost in place**
  - **Source code tar/zip files for every build**
  - **Binaries for releases; scripts set up to allow “standalone” running of binaries for users (as opposed to developers\_**
  - **External libraries now keyed to sim/recon code version**



# May/June Accomplishments Cont'd

---

- Support of I&T Analysis workshop
- Visits to France and Italy to discuss CAL, SciTools, G4 and infrastructure
- Systems tests get breath of fresh air
  - Julie McEnery reviewing and updating content
  - More proactive in pointing out potential issues
- Wrapped standard WCSLIB coordinate transformations for our astro use
- new Java iterations of Build/Processing tools
  - Pipeline, Release Manager/Tag Collector, Data Server, System Tests
  - First generation tools written as separate entities in perl
    - Want to move to Java as OO language with a rich development environment
    - Design an overall system to share common utilities; first generation replicated all of these for each tool
  - toolset defined
  - Functional specs updated for all except Pipeline (so far)



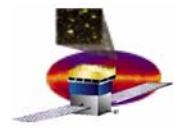
# Show and Tell 1

The screenshot shows a graphical user interface for managing software packages. The window title is "MR-VCMT for Glast --- c:\glast\pdr\FRED Gleam v5r6p1". The interface is divided into several sections:

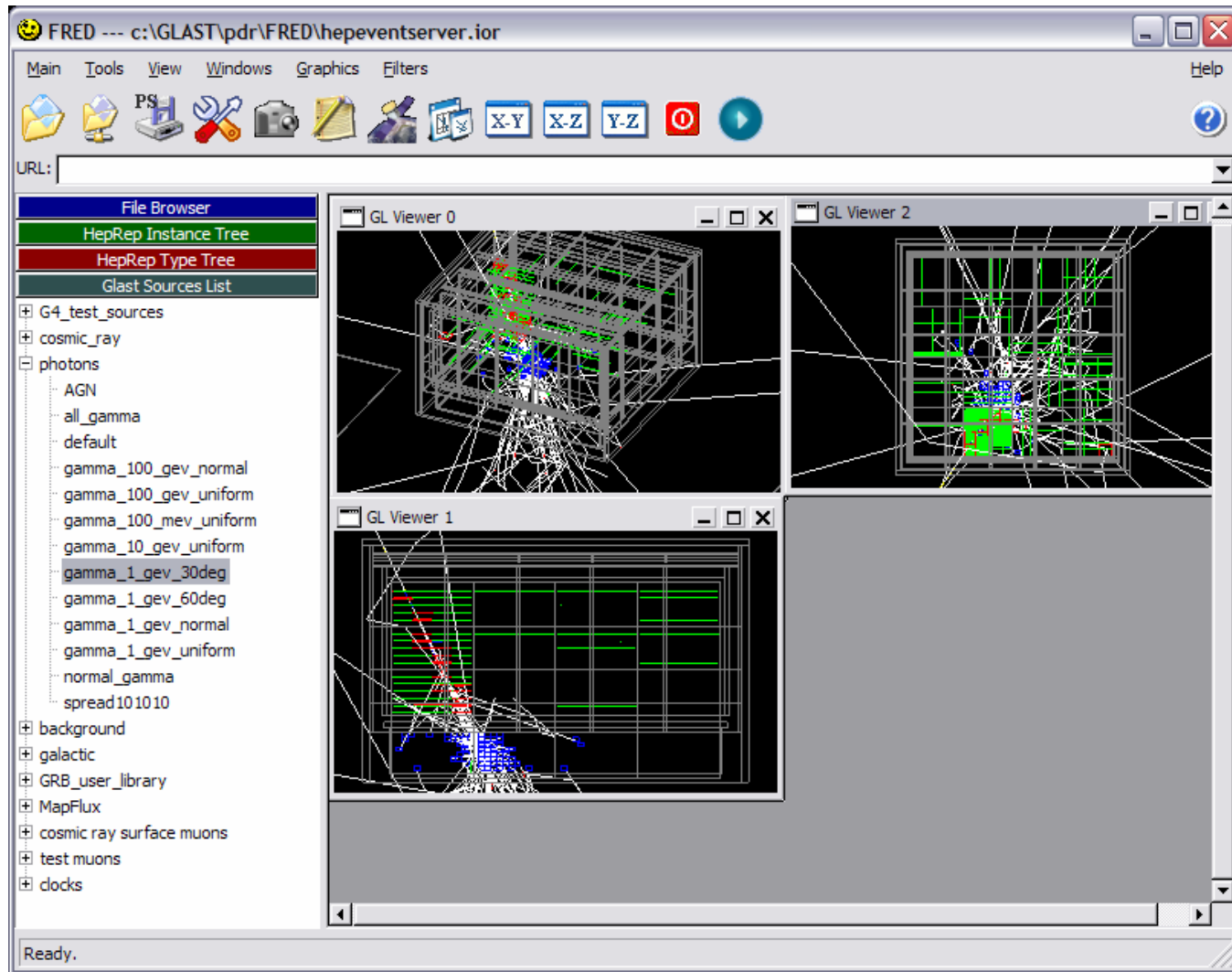
- Package List:** A tree view showing a folder "FRED" containing several packages, with "Gleam v5r6p1" selected. To the right are buttons for "delete", "new", "add", "checkout", "refresh", "filter", and "spawn".
- Actions:** A section with a "Ready" status and an "abort" button. Below it are checkboxes for "broadcast", "local", and "global".
- Dev:** A section with buttons for "config", "make", "clean", "sysclean", "vsupdate", and "start". It also has radio buttons for "Debug" (selected) and "Release", a "Run" button, and a dropdown menu set to "all".
- Cvs:** A section with buttons for "commit", "update", "-n update", "import", "rtag", and "status".
- Doxygen:** A section with buttons for "create" and "examine".
- Main Content Area:** A large text area displaying the contents of a requirements file. The text includes:

```
package Gleam
version v5r6p1
# $Id: requirements.v 1.218 2004/02/28 19:11:44 burnett Exp $
use GuiSvc v*
use Event v*
use GlastSvc v*
# simulation
use FluxSvc v*
use CRflux v*
use GRB v*
use FluxDisplay v*
use G4Generator v*
use G4Propagator v*
#digitization
use CalDigi v*
use TkrDigi v*
use AcqDigi v*
#reconstruction
use Trigger v*
use DetDisplay v*
use TkrRecon v*
use CalRecon v*
use AcqRecon v*
#level 1 filter
use EbfWriter v*
use OnboardFilter v*
#ROOT persistence: RootIo specifies the data packages
use RootIo v*
```

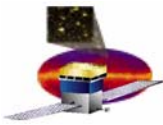
Build Tool GUI



# Show and Tell 2



Event Display



# Show and Tell 3

## Issue Tracker

Issue Navigator - Stanford Linear Accelerator Center - Microsoft Internet Explorer

File Edit View Favorites Tools Help

**JIRA** Stanford Linear Accelerator Center User: Richard Dubois [Filters](#) | [Profile](#) | [Log Out](#)

[HOME](#) [BROWSE PROJECT](#) [FIND ISSUES](#) [CREATE NEW ISSUE](#) [ADMINISTRATION](#) QUICK SEARCH:

Filter: [View](#) [Edit](#) [New](#) [Manage](#)

**Name:**  
GLAST open issues

**Description:**  
All open issues sorted by priority

**Summary**

Status: Open, In Progress  
 Sorted by: Priority descending, then Issue Type ascending, then Key descending

**Operations**

[Rename](#) current filter  
 [Save as](#) new filter  
 [Subscriptions](#) for current filter  
 [Share](#) current filter

**Issue Navigator -- GLAST open issues**

Displaying issues 1 to 20 of 33 matching issues .

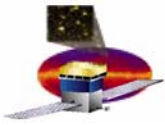
**Current View:**  
Browser | [Printable](#) | [Excel](#) | [XML](#) | [Full Content](#) ?

1 | 2 | [Next >>](#)

T	Key	Summary	Assignee	Reporter	Pr	Status
	<a href="#">SYSTESTS-5</a>	system test for LDF converter	Heather Arighi	Xin Chen	↑	Open
	<a href="#">JIRA-3</a>	Can't create new bug report	Johann Cohen-Tanugi	Anders W. Borgland	↑	In Pro
	<a href="#">FRED-4</a>	Wrong OmniOrb version for Windows	Riccardo Giannitrapani	Riccardo Giannitrapani	↑	Open
	<a href="#">EXTLIB-1</a>	inconsistency of build with an expected python 2.3 library	Johann Cohen-Tanugi	Johann Cohen-Tanugi	↑	In Pro
	<a href="#">CMT-17</a>	sysclean cleans out more than the directory of the package cleaned	Riccardo Giannitrapani	Richard Dubois	↑	Open
	<a href="#">CAL-1</a>	update CalRecon to allow readouts for only one log end	Sasha Chekhtman	Richard Dubois	↑	In Pro
	<a href="#">STDOC-1</a>	Doxygen generation for remote sites	Johann Cohen-Tanugi	Toby Burnett	↑	Open
	<a href="#">PIPE-1</a>	test drive FastCopy for data xfer between LAT & MOC & SSC	Navid Golpayegani	Richard Dubois	↑	Open
	<a href="#">FRED-2</a>	Need to be able to look with FRED at a sub-sample of previously selected events.	Riccardo Giannitrapani	Anders W. Borgland	↑	Open
	<a href="#">SYSTESTS-4</a>	Can you add the version used for the Instrument Analysis workshop in the system tests plots?	Matt Langston	Eduardo do Couto e Silva	↑	Open

Have

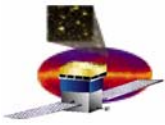
Internet



# Upcoming for July

---

- **Complete I&T deliverables**
- **Address binary formats of calibrations**
  - **800k ToT gains don't belong in an xml file!**
- **OPUS pipeline functioning**
  - **We've had much more trouble than expected hooking up to STScI pipeline framework**
  - **We replaced much of its functionality already in using Oracle database for bookkeeping and SLAC batch system for parallel processing**
  - **There is only a little of OPUS left and we expect to replace that in July prior to starting the 2<sup>nd</sup> iteration of the pipeline in Java.**
  - **This has all taken much longer than planned and we need to keep an eye on it.**
- **Outfitting output files with headers recording run information**
  - **Code versions; run parameters etc**
- **Participate in trade study on file transfer tools between MOC/ISOC/SSC**
  - **Security issues foremost for two candidate tools – DTS (HEASARC) and FastCopy (commercial)**
- **Prep for ISOC and GSDR reviews in August**

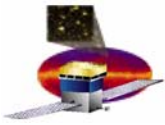


# Key Milestones

---

- ❑ **ISOC Subsystem CDR – Aug 3, 2004**
  
- ❑ **EM2 (support) – June 2004**
  
- ❑ **Start of Flight Integration (support) – Aug 2004**
  
- ❑ **GSDR – Aug 18-19 2004**
  
- ❑ **Mission GRT1 – Feb 2005**
  
- ❑ **DC2 – Feb 2005??**





# Issues & Concerns

---

- ❑ I&T support has been heavy load
  - ❑ Pipeline must be watched closely
- ❑ Start thinking about DC2 – must juggle I&T support with DC schedule
- ❑ Reviews are getting closer