

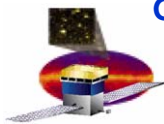
GLAST Large Area Telescope

Systems Engineering

Test Status, NCRs and Verification Status

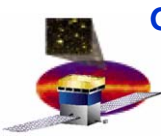
Pat Hascall
Systems Engineering
Joe Cullinan
Quality

Stanford Linear Accelerator Center



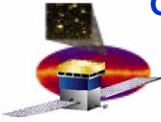
LAT Test Status

- **Started CPT 3**
- **Issues seen**
 - **Duplicate event numbers (resolved, see FSW presentation)**



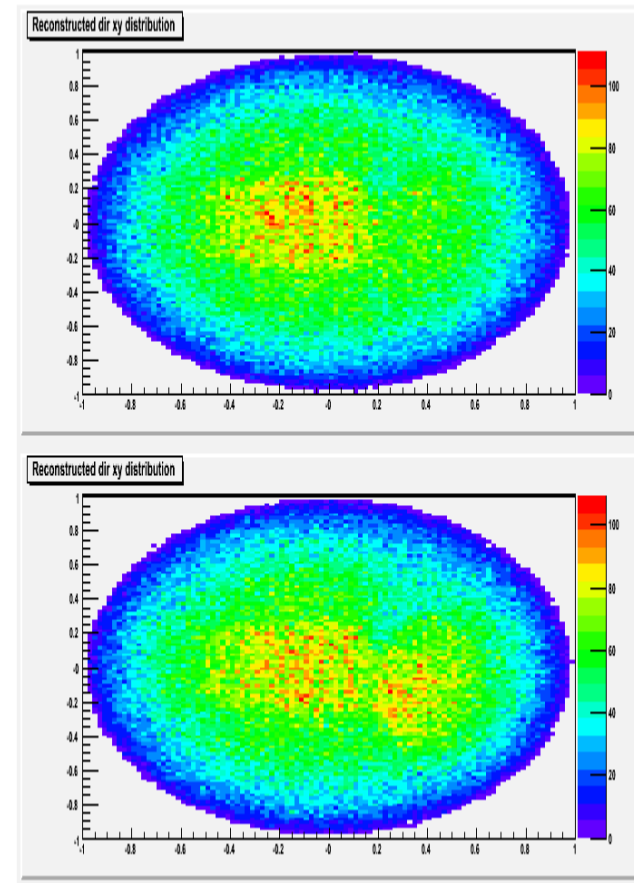
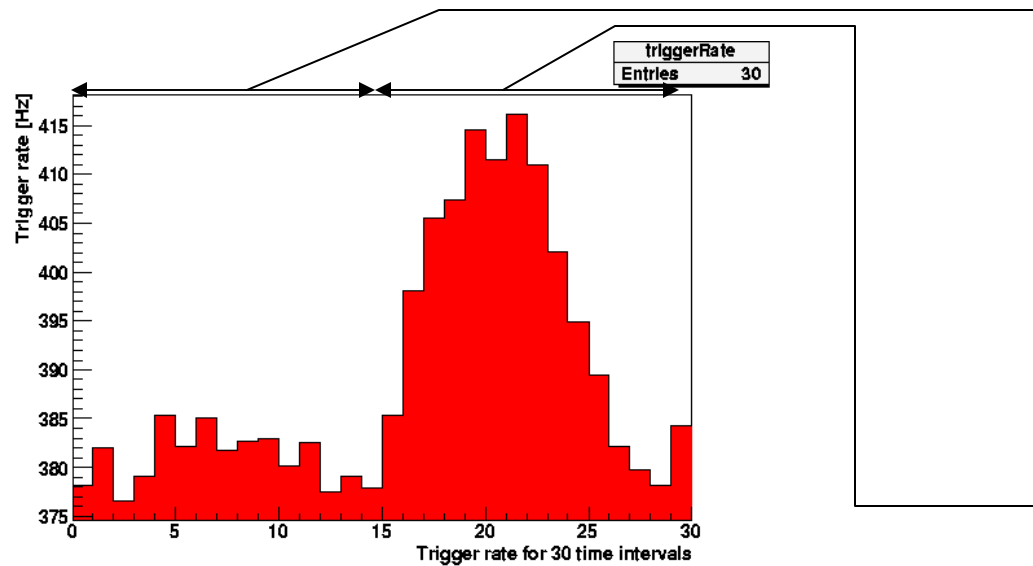
Chiller Off Results

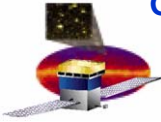
- **Temperature rise rates for the tracker were 2 degrees per hour**
 - **Max desired temperature is 35**
 - **Starting from 20C gives about 8 hours until 35C is reached**
 - **AT was 45C**
- **GASU rate was 3 degrees per hour**
 - **AT was 50C**
 - **Starting from 20C gives about 7 hours assuming the initial rate holds**
- **Other units under analysis**



Son of the Blob

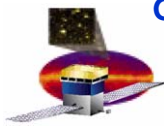
- Trigger rates rose about midway through the run, then fell back to original rates
- Time is roughly consistent with opening the bay door





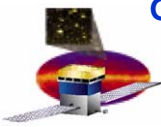
FREE Power Up

- **Issue**
 - During the post XY aliveness test, config 2, FREE 5 had both veto drivers enabled after power up.
- **Analysis**
 - The power up sequence is:
 - FREE card powered
 - Both veto drivers disabled
 - When the bias voltage is set (for all FREE cards) the desired veto driver is enabled
 - With both veto drivers enabled, the 3.3V telemetry is slightly decreased for that FREE card and the 3.3V current sum is slightly elevated
 - Review of historical data in 450 power-ups since early 2006
 - Showed 15 previous incidents starting in September
 - All but 1 using redundant GASU
 - Appears equally likely across FREE cards
 - Likely cause for the redundant GASU cases was determined (courtesy Erik Siskind) and the fix addressed in JIRA FSW-1001
 - The configuration 1 instance is now resolved
 - Traced to previously known jump in spacecraft clock
 - Clock related telemetry fed through a LAT model resulted in two short intervals, consistent with timing of the two FREE cards which powered up in the unexpected state
 - The short intervals causes the FSW emitted commands to arrive at the FREE card before the GASU returns the clock to 20MHz



FREE Power Up (continued)

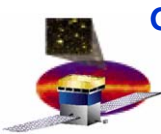
- **Resolution**
 - **JIRA-1001 was approved and will be implemented in the next FSW load**
 - **Spacecraft clock jumps have been corrected**
- **Impacts**
 - **None**



Operating Hours

- As of Oct 26, 2007 the LAT passed 700 operating hours since the timer fix was installed
- B1.0.1 has 281 operating hours

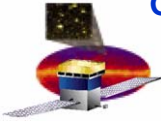
LAT Unit Operating Time (Hrs)												
SIU-P	SIU-R	GAS U-P	GAS U-R	EPU-P0	EPU-P1	EPU-R	CAL/TKR/TEM	ACD	ACD HV1	ACD HV2	PDU-P	PDU-R
2011	2080	1970	2121	2101	3963	2118	4091	4091	1994	2097	2016	2075



NCR Summary Status

- **Closure statement for reboot NCRs/QAR submitted and the QAR is closed**

Closure Plan	Definition	Count
Work continuing		
QAR	CND or other issue transferred to a QAR	9



LAT Level Verification Status

Category	Verification Method					Totals	
	Test	Demo	Analysis	Inspection	Children	Complete	% Comp
	# Comp	# Comp	# Comp	# Comp	# Comp		
Requirement Identified	105	63	209	37	44	458	100.0%
Flow Down Complete	105	63	209	37	44	458	100.0%
Draft Verification Plans	105	63	209	37	44	458	100.0%
Final Verification Plans	105	63	209	37	44	458	100.0%
Verification Plans Executed	104	63	194	35	15	411	89.7%
Verification Reports Submitted	104	63	194	35	15	411	89.7%
Requirements Sold	104	63	193	35	15	410	89.5%
Expect Compliance	0	0	0	0	0	0	0.0%
Verifications Plan Deferred	1	0	15	2	29	47	10.3%
Requirements Issues	0	0	0	0	0	0	0.0%
Total VPs	105	63	209	37	44	458	

- **Progress this month**
 - All 458 VPs are Final
 - 410 of 411 VPs planned for execution have been approved by GSFC
 - 1 SRD VP (Background Rejection) in work by GSFC
- **Status**
 - VCRM version 27 released
 - All deferred GRB reqts will be sold post FSW B1.0 installation